

MANGUERAS HOSES CAMLOCK
CAMLOCK CONEXIONES PVC
FITTINGS COUPLING HOSES
MANGUERAS HOSES CAMLOCK
CAMLOCK CONEXIONES PVC
FITTINGS ACOPLERES HOSES
MANGUERAS HOSES CAMLOCK
CAMLOCK CONEXIONES PVC
FITTINGS COUPLING HOSES
MANGUERAS HOSES CAMLOCK
CAMLOCK CONEXIONES PVC
FITTINGS ACOPLERES HOSES
MANGUERAS HOSES CAMLOCK
CAMLOCK CONEXIONES PVC
FITTINGS COUPLING HOSES
CAMLOCK CONEXIONES PVC



INDUSTRIAL PRODUCTS

CENTRO DE DISTRIBUCIÓN **DISTRIBUTION CENTER**



El centro de distribución está localizado en Panamá, corazón del continente y nuestra infraestructura está capacitada para suplir eficientemente las demandas de todos los clientes.



The distribution center is strategically located in Panamá, the heart of the continent and our infrastructure is able to efficiently meet the demands of our customers.

COVALCA
LV FLUID CONNECTORS

NUESTROS MERCADOS

Our Markets



COMPRESIÓN DE AIRE

Compressed Air

A.1 Servicio General Aire – Agua / *General Service Air-Water*

A.2 Aire-Agua Trabajo Pesado / *Air-Water Heavy Duty*

A.2 PVC Aire-Agua / *Air-Water PVC*

LÍQUIDOS

Liquids Hoses

A.3 Descarga de Agua / *Water Discharge*

A.3 Succión y Descarga de Agua / *Water S & D*

A.4 PVC Descarga de Agua (Lay Flat) / *PVC Discharge Hose (Lay Flat)*

A.5 PVC S y D Multipropósito / *PVC Multipurpose S & D Hose*

A.5 PVC S y D (Motobombas) / *PVC for Pumps*

A.6 PVC para Aplicaciones Agrícolas / *PVC for Agricultural Applications*

A.6 PVC para Piscina / *PVC for Pool Applications*

MINERÍA

Mining

A.7 Servicio General Aire-Agua-Aceite / *General Service Air-Water-Oil*

A.7 Servicio General Aire-Agua / *General Service Air-Water*

A.8 Aire-Agua Trabajo Pesado / *Heavy Duty General Service Air-Water*

SOLDADURA

Welding Hose

A.9 Soldadura Oxicorte / *Twin Line (Oxygen/ Acetilene)*

HIDROCARBUROS

Hydrocarbons

A.10 Succión y Descarga de Combustible / *S&D (Tank Truck Hose)*

A.10 Gas LPG / *LPG Gas*

AGUA CALIENTE Y VAPOR

Hot Water & Steam Hoses

A.12 Vapor / Steam Hose

A.12 Succión y Descarga de Agua Caliente /
Air-Water Heavy Duty

A.13 Radiador / Radiator Hose

A.14 Tubo de Acero Inoxidable / Stainless Steel
Tube

ALIMENTOS

Food Hoses

A.15 PVC para Succión (FDA) / FDA PVC Suction Hose

A.15 Tubo de PVC FDA y NSF / FDA and NSF PVC Tubing

A.16 PVC Grado Alimenticio / FDA PVC

A.16 PVC para Bebidas / PVC Beverages

ÁCIDOS Y QUÍMICOS

Acid & Chemicals

A.17 Succión y Descarga de Químicos /
XLPE Chemicals S & D Hose

A.17 PVC para Fumigación / PVC Spray an
Fumigation Hose

MANEJOS DE MATERIALES

Material Handling

A.18 Descarga de Cemento / Cement Discharge Hose

A.18 Concreto Premezclado y Yeso / Concrete & Plaster Hose

A.19 Sand Blasting / Sand Blasting Hose

A.19 PVC para Trabajo Pesado / Heavy Duty PVC

A.20 PVC Aire - Vacío / Air Vacuum PVC

A.20 PVC Aire - Vacío TPU / TPU Air Vacuum PVC

PROTECTORES PARA MANGUERAS

Hoses Protection

A.21 Espiraleta / Hose Guards

A.21 Mangas para Alta Temperatura / Fire Sleeves

CAM- LOCKS / ACOPLER INDUSTRIALES Industrial Couplings / Cam-Locks

- B.1 Acople Rápido Adaptador Macho x Rosca Hembra /
Camlock Coupling Male Adapter x Female
- B.2 Acople Rápido Hembra x Rosca Macho / *Camlock
Coupling Female x Male Thread*
- B.3 Acople Rápido Hembra x Espiga para Manguera /
Camlock Coupling Female x Hose Barb
- B.4 Acople Rápido Hembra x Rosca Hembra /
Camlock Coupling Female x Female Thread
- B.5 Acople Rápido Adaptador Macho x Espiga para Manguera
Camlock Coupling Male Adapter x Hose Barb
- B.6 Acople Rápido Adaptador Macho x Rosca Macho
Camlock Coupling Male Adapter x Male Thread
- B.7 Acople Rápido Parte DC "Tapa"
Camlock Coupling Part DC "Dust Cap"
- B.8 Acople Rápido Parte DP "Tapón"
Camlock Coupling Part DP "Dust Plug"
- B.8 Empacadura
Camlock Gasket

ACCESORIOS / Niples Accessories / Nipples

- B.9 Parte HB / Bronce / *HB Part / Brass*
- B.9 Parte HBS / Acero Inoxidable / *HBS Part / Stainless Steel*
- B.9 PL-SET / Conexiones para Mangueras de S & D /
S&D Hose Couplings

NIPLES Nipples

- B.10 Niples Combinados / *Combination Nipples*
- B.10 Unión para Mangueras / *Steel Hose Union*
- B.10 Reducción Acople Hembra / Espiga para Manguera
Reduction Female Coupler / Hose Barb

CONEXIONES TIPO BOSS Ground Join Seal

- B.11 Conexión Hembra / *Female Fitting*
- B.11 Conexión Macho / *Male Fitting*
- B.11 Abrazadera / *Hose Clamp*

CONEXIONES TIPO CHICAGO Claw Couplings

- B.12 Espiga para Compresores / *Compressor Hose Barb*
- B.12 Hembra para Compresores / *Compressor Female Coupling*
- B.12 Macho para Compresores / *Compressor Male Coupling*
- B.13 Conexión 3 Vías / *Compressor Coupling (3 Ways)*
- B.13 Anillo de Goma / *Rubber Ring*
- B.14 Ferrul / *Ferrule*
- B.14 Argolla / *Sleeves*

CONEX. PARA MANGUERAS SANDBLASTING SandBlast Couplings

- B.13 Conexión para Manguera de Chorro de Arena /
Sanblast Hose Coupling
- B.14 Conex. para Manguera de Chorro de Arena (Terminal)
Sanblast Hose Coupling (Terminal)

INDICE VISUAL

Visual Index

Mangueras Industriales

INDUSTRIAL HOSES

A.1



SERVICIO GENERAL AIRE - AGUA
GENERAL SERVICE AIR - WATER
H02092

A.1



SERVICIO GENERAL AIRE - AGUA
GENERAL SERVICE AIR - WATER
H02093

A.2



H02095
S. GENERAL AIRE-AGUA Y ACEITE NO CONDUCTIVA
GENERAL SERVICE AIR-WATER-OIL HOSE - NON CONDUCTIVE

A.3



H02309
SERVICIO GENERAL AIRE-AGUA TRAB. PESADO
GENERAL SERVICE AIR -WATER HEAVY DUTY

A.3



PVC AIRE-AGUA
AIR -WATER PVC
H02390

A.4



DESCARGA DE AGUA
WATER DISCHARGE
H02306

A.4



SUCCIÓN Y DESCARGA DE AGUA
WATER SUCTION AND DISCHARGE
H02392

A.5



PVC PARA DESCARGA DE AGUA- LAY FLAT
PVC DISCHARGE HOSE-LAY FLAT
H02541

A.5



DESCARGA DE AGUA- LAY FLAT
DISCHARGE HOSE-LAY FLAT
H02543

A.6



PVC PARA SUCCIÓN Y DES. MULTIPROPÓSITO
PVC MULTIPURPOSE S&D HOSE
H02561

A.6



H02575
PVC PARA SUCCIÓN Y DES. MOTOBOMBAS
PVC FOR PUMPS

A.7



H02587
PVC PARA APLICACIONES AGRICOLA
PVC FOR AGRICULTURAL APPLICATIONS

A.7



H02595
PVC PARA PISCINA
PVC FOR POOL APPLICATIONS

A.8



H02307
SERVICIO GE. AIRE-AGUA-ACEITE MINERÍA
MINING GENERAL SERVICE AIR-WATER-OIL

A.8



H02308
SERVICIO GENERAL AIRE-AGUA MINERÍA
MINING GENERAL SERVICE AIR-WATER

A.9



H02310
SERVICIO GENERAL AIRE-AGUA TRAB. PESADO
HEAVY DUTY GENERAL SERVICE AIR-WATER

A.9



H02311
SERVICIO GENERAL AIRE-AGUA TRAB. PESADO
HEAVY DUTY GENERAL SERVICE AIR-WATER

A.10



H02126
SOLDADURA (OXICORTE)
TWIN LINE WELDING (OXYGEN/ACETYLENE)

A.10



H02127
MANGUERA PARA ACETILENO
HOSE FOR ACETYLENE

A.10



H02128
MANGUERA PARA OXÍGENO
HOSE FOR OXYGEN

A.11



H02216
SUCCIÓN Y DESCARGA DE COMBUSTIBLE
FUEL SUCTION & DISCHARGE (TANK TRUCK HOSE)

A.11



H02316
SUCCIÓN Y DESCARGA PVC / NBR
FUELSUCTION AND DISCHARGE PVC / NBR

INDICE VISUAL

Visual Index

Mangueras Industriales

INDUSTRIAL HOSES

A.12



MANGUERA PARA GAS LPG
LPG GAS HOSE H02132

A.12



MANGUERA PARA GAS LPG
LPG GAS HOSE H02133

A.13



MANGUERA PARA VAPOR
STEAM HOSE H02264

A.13



MANGUERA PARA VAPOR
STEAM HOSE H02265

A.14



SUCCIÓN Y DESCARGA DE AGUA CALIENTE
HOT WATER SUCTION & DISCHARGE H02188

A.14



MANGUERA PARA RADIADOR
RADIATOR HOSE H02410

A.15



TUBO DE ACERO INOXIDABLE 321 CON
MALLA DE ACERO INOXIDABLE 304
321 STAINLESS STEEL TUBE WITH STAINLESS
STEEL MESH 304 H02211

A.16



PVC PARA SUCCIÓN FDA
FDA PVC SUCTION HOSE H02570

A.16



TUBO DE PVC -FDA Y NSF
FDA PVC SUCTION HOSE H02558

A.17



PVC GRADO ALIMENTICIO
FDA PVC H02581

A.17



PVC PARA BEBIDAS
PVC BEVERAGES H02582

A.17.1



SUCCIÓN Y DESCARGA DE ALIMENTOS Y BEBIDAS FDA
FDA FOOD AND BEVERAGES SUCTION AND DISCHARGE HOSE H02223

A.18



SUCCIÓN Y DESCARGA DE QUÍMICOS
XLPE CHEMICAL SUCTION HOSE H02276

A.18



MANGUERA PARA FUMIGACIÓN
PVC SPRAY AIR AND FUMIGATION HOSE H02533

A.19



PARA DESCARGA DE CEMENTO
CEMENT DISCHARGE HOSE H02218

A.19



PARA BOMBAS DE CONCRETO PREMEZCLADO Y YESO
CONCRETE PUMP AND PLASTER HOSE H02235

A.20



MANGUERA SAND BLASTING
SAND BLASTING HOSE H02244

A.20



PVC PARA TRABAJO PESADO
HEAVY DUTY PVC H02564

A.21



PVC PARA SUCCIÓN Y DESCARGA MULTIPROPOSITO
MULTIPURPOSE SUCTION AND DISCHARGE HOSE H02569

A.21



PVC AIRE-VACÍO
AIR-VACUUM PVC H02590

A.22



PVC AIRE-VACÍO TPU
TPU AIR-VACUUM PVC H02591

A.23



PROTECTORES TIPO ESPIRALETO
HOSE GUARDS H02598

A.23



MANGAS RESISTENTES A ALTAS TEMPERATURAS
FIRE SLEEVES TD H02444



MANGUERAS HOSES

H02092 / Servicio General Aire - Agua
General Service Air-Water A.1

H02093 / Servicio General Aire - Agua
General Service Air-Water A.1

H02309 / Aire - Agua Trabajo Pesado
Air - Water Heavy Duty A.2

H02390 / PVC Aire - Agua
Air - Water PVC A.2

COMPRESIÓN DE AIRE

Compressed Air

MANGUERAS INDUSTRIALES INDUSTRIAL HOSES

Manguera para Compresión de Aire COMPRESSED AIR HOSE

CONSTRUCCIÓN

Tubo Interno: Mezcla de goma sintética SBR, No conductiva. **Refuerzo:** Mallas textiles de poliéster, **Cubierta:** Mezcla de goma sintética EPDM / SBR. Lisa y de color rojo, **Aplicación:** Compresión de aire y aplicaciones generales en Industrias. **Rango de Temperatura:** -20°C+70°C.

CONSTRUCTION

Inner Tube: SBR blended, Non Conductive **Reinforcement:** High tensile polyester cords, **Cover:** EPDM /SBR blended, smooth, red, **Application:** Compressed air and general industrial applications, **Temperature Range:** -20°C+70°C.



S. GENERAL AIRE - AGUA NO CONDUCTIVA
General Service Air - Water - Non Conductive **H02092**

Código Code	Diámetro Interno Hose I.D.		Diámetro Externo Hose O.D.		Presión Max. de Trab. Working Pressure		Presión Min. de Ruptura Burst Pressure		Radio de Curvatura Bending Radius		Rollo Roll	
	in	mm	mm	in	bar	psi	bar	psi	mm	in	mts	fts
H02092-250	1/4"	6,3	14,0	0,55	20	300	60	900	40	1.57	150	492,13
H02092-313	5/16"	7,9	15,9	0,63	20	300	60	900	50	1.97	150	492,14
H02092-380	3/8"	9,5	17,5	0,69	20	300	60	900	55	2.17	150	492,15
H02092-500	1/2"	12,7	22,2	0,87	20	300	60	900	70	2.76	100	328,08
H02092-625	5/8"	15,9	27,0	1,06	20	300	60	900	85	3.35	100	328,09
H02092-750	3/4"	19,0	29,4	1,16	20	300	60	900	95	3.74	100	328,10
H02092-1000	1"	25,4	36,5	1,44	20	300	60	900	125	4.92	100	328,11
H02092-1250	1.1/4"	32,0	44,0	1,73	20	300	60	900	150	5.91	60	196,85
H02092-1500	1.1/2"	38,1	54,0	2,13	20	300	60	900	185	7.28	60	196,85
H02092-2000	2"	50,8	66,0	2,60	20	300	60	900	290	11.42	60	196,85

CONSTRUCCIÓN

Tubo Interno: Mezcla de goma sintética SBR, No conductiva. **Refuerzo:** Mallas textiles de poliéster, **Cubierta:** Mezcla de goma sintética EPDM / SBR. Lisa y de color negro, **Aplicación:** Compresión de aire y aplicaciones generales en Industrias. **Rango de Temperatura:** -20°C+70°C.

CONSTRUCTION

Inner Tube: SBR blended, Non Conductive **Reinforcement:** High tensile polyester cords, **Cover:** EPDM /SBR Blended, smooth, black, **Application:** Compressed air and general industrial applications, **Temperature Range:** -20°C+70°C.



S. GENERAL AIRE - AGUA NO CONDUCTIVA
General Service Air - Water - Non Conductive **H02093**

Código Code	Diámetro Interno Hose I.D.		Diámetro Externo Hose O.D.		Presión Max.Trab. Working Pressure		Presión Min.Ruptura Burst Pressure		Radio de Curvatura Bending Radius		Rollo Roll	
	in	mm	mm	in	bar	psi	bar	psi	mm	in	mts	fts
H02093-250	1/4"	6,3	14,0	0,55	20	300	60	900	40	1.57	150	492,13
H02093-313	5/16"	7,9	15,9	0,63	20	300	60	900	50	1.97	150	492,14
H02093-380	3/8"	9,5	17,5	0,69	20	300	60	900	55	2.17	150	492,15
H02093-500	1/2"	12,7	22,2	0,87	20	300	60	900	70	2.76	100	328,08
H02093-630	5/8"	15,9	27,0	1,06	20	300	60	900	85	3.35	100	328,09
H02093-750	3/4"	19,0	29,4	1,16	20	300	60	900	95	3.74	100	328,10
H02093-1000	1"	25,4	36,5	1,44	20	300	60	900	125	4.92	100	328,11
H02093-1250	1.1/4"	32,0	44,0	1,73	20	300	60	900	150	5.91	60	196,85
H02093-1500	1.1/2"	38,1	54,0	2,13	20	300	60	900	185	7.28	60	196,85
H02093-2000	2"	50,8	66,0	2,60	20	300	60	900	290	11.42	60	196,85



Manguera para Compresión de Aire

COMPRESSED AIR HOSE

MANGUERAS INDUSTRIALES

INDUSTRIAL HOSES

CONSTRUCCIÓN

Tubo Interno: Mezcla de Goma sintética NBR, **Refuerzo:** Mallas textiles
Cubierta: Mezcla de goma sintética NBR/PVC, **Aplicación:** Compresión de aire, servicios generales en industrias, agua, aire y aceite, también puede usar en aplicaciones con kerosene.
Rango de Temperatura: -29°C + 88°C

CONSTRUCTION

Inner Tube: NBR Blended, **Reinforcement:** High strength synthetic yarn.
Cover: NBR/PVC Blended, **Application:** Compressed aire, general industrial application with water, aire and oil, also suitable for Kerosene
Temperature Range: -29°C + 88°C



S. GENERAL AIRE-AGUA Y ACEITE NO CONDUCTIVA
 General Service Air-Water-Oil Hose - Non Conductive **H02095**

Código Code	Diámetro Interno Hose I.D		Diámetro Externo Hose O.D		Presión Max.Trab. Working Pressure		Presión Min.Ruptura Burst Pressure		Radio de Curvatura Bending Radius		Peso Weight		Rollo Roll	
	in	mm	mm	in	bar	psi	bar	psi	mm	in	Kg/m	lb/ftm	mts	fts
H02095-500	1/2"	12.7	22	7/8"	20	300	80	1200	100	3.94	0.37	0.25	100	328.57
H02095-750	3/4"	19.1	30	1-3/16"	20	300	80	1200	155	6.10	0.62	0.42	100	328.57
H02095-1000	1"	25.4	37	1-7/16"	20	300	80	1200	205	8.07	0.84	0.57	100	328.57
H02095-1500	1.1/2"	31	54	1-3/16"	20	300	60	900	305	12	--	--	60	196.8



MANGUERAS INDUSTRIALES INDUSTRIAL HOSES

Manguera para Compresión de Aire COMPRESSED AIR HOSE

CONSTRUCCIÓN

Tubo Interno: Mezcla de goma sintética NR/SBR, **Refuerzo:** Mallas textiles, **Cubierta:** Mezcla de goma sintética EPDM / SBR. **Aplicación:** Compresión de aire para aplicaciones de trabajo pesado, **Rango de Temperatura:** -25°C + 70°C

CONSTRUCTION

Inner Tube: Synthetic NR/ SBR blended rubber, **Reinforcement:** High tensile textile cords, **Cover:** EPDM /SBR blended, smooth, red, **Application:** Compressed air for heavy duty applications, **Temperature Range:** -25°C + 70°C



S.GENERAL AIRE - AGUA TRABAJO PESADO
General Service Air - Water Heavy Duty H02309

Código Code	Diámetro Interno Hose I.D		Diámetro Externo Hose O.D		Presión Max. de Trab. Working Pressure		Presión Min. de Ruptura Burst Pressure		Radio de Curvatura Bending Radius		Rollo Roll	
	in	mm	mm	in	bar	psi	bar	psi	mm	in	mts	fts
H02309-1250	1.1/4"	25	44.0	1.73	20	300	60	900	350	13.78	40.00	131.23
H02309-1500	1.1/2"	31	54.0	2.13	20	300	60	900	420	16.54	40.00	131.23
H02309-2000	2"	38	66.0	2.60	20	300	60	900	610	24.01	40.00	131.23

CONSTRUCCIÓN

Tubo Interno: PVC negro **Refuerzo:** Mallas textiles, **Cubierta:** PVC Azul
Aplicación: Compresión de aire y aplicaciones generales en industrias. Buena flexibilidad a bajas temperaturas de trabajo, **Rango de Temperatura:** -5°C + 65°C.

CONSTRUCTION

Inner Tube: Black PVC, **Reinforcement:** High tensile textile cords, **Cover:** Blue PVC
Application: Compressed air and general industrial applications. Good flexibility at low temperature, **Temperature Range:** -5°C + 65°C



PVC AIRE-AGUA
Air - Water PVC H02390

Código Code	Diámetro Interno Hose I.D		Diámetro Externo Hose O.D		Presión Max. de Trab. Working Pressure		Diámetro Externo Hose O.D		Radio de Curvatura Bending Radius		Rollo Roll	
	in	mm	mm	in	bar	si	bar	si	mm	in	mts	fts
H02390-04	1/4"	6.5	12.0	0.47	20	300	60	900	33	0.13	100.00	328.08
*H02390-04R	1/4"	6.5	12.0	0.47	20	300	60	900	33	0.13	100.00	328.08
H02390-05	5/16"	8.5	14.0	0.55	20	300	60	900	43	0.17	100.00	328.08
H02390-06	3/8"	10.0	16.0	0.63	20	300	60	900	50	0.20	100.00	328.08
*H02390-06R	3/8"	10.0	16.0	0.63	20	300	60	900	50	0.20	100.00	328.08
H02390-08	1/2"	13.0	20.0	0.79	20	300	60	900	65	0.26	100.00	328.08
*H02390-08R	1/2"	13.0	20.0	0.79	20	300	60	900	65	0.26	100.00	328.08
H02390-10	5/8"	16.0	25.0	0.98	20	300	60	900	80	0.31	100.00	328.08
H02390-12	3/4"	19.0	28.5	1.12	20	300	60	900	95	0.37	50.00	164.04
H02390-16	1"	25.0	34.5	1.36	20	300	60	900	125	0.49	50.00	164.04
H02390-24	1.1/2"	38.0	50.0	1.97	20	300	60	900	190	0.75	50.00	164.04
H02390-32	2"	50.0	64.0	2.52	20	300	60	900	250	0.98	50.00	164.04

* Cubierta de Color Rojo / Red Cover



MANGUERAS HOSES

H02306 / Descarga de Agua
Water Discharge A.3

H02392 / Succión y Descarga de Agua
Water S & D A.3

H02541 / PVC Descarga de Agua (Lay Flat)
PVC Discharge Hose (Lay Flat)..... A.4

H02543 / PVC Descarga de Agua (Lay Flat)
PVC Discharge Hose (Lay Flat)..... A.4

H02561 / PVC S y D Multipropósito
PVC Multipurpose S & D Hose A.5

H02575 / PVC (Motobombas)
PVC for Pumps A.5

H02587 / PVC para Aplicaciones Agrícolas
PVC for Agricultural Applications A.6

H02595 / PVC para Piscina
PVC for Pool Applications A.6

AGUA Y LÍQUIDOS
Water & Liquids



MANGUERAS INDUSTRIALES INDUSTRIAL HOSES

Manguera para Agua y Líquidos WATER & LIQUIDS HOSES

CONSTRUCCIÓN

Tubo Interno: Mezcla de goma sintética NR/SBR, **Refuerzo:** Mallas textiles,
Cubierta: Mezcla de goma sintética EPDM / SBR.
Aplicación: Trasegado de fluidos, aire, agua, **Rango de Temperatura:** -4°C + 70°C.

CONSTRUCTION

Inner Tube: Synthetic NR/ SBR blended rubber **Reinforcement:** High tensile textile cords
Cover: Synthetic EPDM/ SBR blended rubber, **Application:** Air and water delivery
Temperature Range: -4°C + 70°C.



DESCARGA DE AGUA
Water Discharge H02306

Código Code	Diámetro Interno Hose I.D.		Diámetro Externo Hose O.D.		Presión Max. de Trab. Working Pressure		Presión Min. de Ruptura Burst Pressure		Radio de Curvatura Bending Radius		Rollo Roll	
	in	mm	mm	in	bar	psi	bar	psi	mm	in	mts	fts
H02306-1500	1.1/2"	38.1	48.0	1.89	10	150	30	450	195	7.68	30.00	98.43
H02306-2000	2"	50.8	62	2.44	10	150	30	450	280	11.02	30.00	98.43
H02306-3000	3"	76.2	88	3.46	10	150	30	450	410	16.14	30.00	98.43
H02306-4000	4"	101.6	114	4.49	10	150	30	450	540	21.26	30.00	98.43
H02306-6000	6"	152.4	165	6.50	10	150	30	450	950	37.4	30.00	98.43
H02306-8000	8"	203.2	219	8.62	10	150	30	450	1480	58.27	10.00	32.81
H02306-10000*	10"	254.0	272	10.00	5	90	15	225	1840	72.44	10.00	32.81
H02306-12000*	12"	304.8	323	12.00	5	90	15	225	2515	99.02	10.00	32.81
H02306-16000*	16"	406.4	423	16.65	5	90	15	225	3730	146.85	10.00	32.81

* Disponible solo bajo pedido
Under order

CONSTRUCCIÓN

Tubo Interno: Mezcla de goma sintética NR/SBR, **Refuerzo:** Mallas textiles con alambre de acero en espiral, **Cubierta:** Mezcla de goma sintética EPDM/SBR
Aplicación: Succión y descarga de agua en aplicaciones generales de industria y agrícolas
Rango de Temperatura: -4°C + 70°C

CONSTRUCTION

Inner Tube: Synthetic NR/ SBR blended rubber, **Reinforcement:** High tensile textile cords with one helix wire, **Cover:** Synthetic EPDM/ SBR blended rubber,
Application: Water suction and delivery in general industrial and agricultural applications,
Temperature Range: -4°C + 70°C



SUCCIÓN Y DESCARGA DE AGUA
Water Suction and Discharge H02392

Código Code	Diámetro Interno Hose I.D.		Diámetro Externo Hose O.D.		Presión Max. de Trab. Working Pressure		Presión Min. de Ruptura Burst Pressure		Succión Vacuum Rating		Radio de Curvatura Bending Radius		Rollo Roll	
	in	mm	mm	in	bar	psi	bar	psi	bar	InHg	mm	in	mts	fts
H02392-2000	2"	50.8	63.0	2.48	10	150	30	450	0.9	27	230	9.06	40.00	131.23
H02392-3000	3"	76.2	90.0	3.54	10	150	30	450	0.9	27	330	12.99	40.00	131.23
H02392-4000	4"	101.6	118.0	4.65	10	150	30	450	0.9	27	440	17.32	40.00	131.23
H02392-6000	6"	152.4	171.0	6.73	10	150	30	450	0.9	27	810	31.89	30.00	98.43
H02392-8000*	8"	203.2	223.0	8.78	10	150	30	450	0.9	27	1280	50.39	30.00	98.43
H02392-10000*	10"	254.0	278.0	10.94	10	150	30	450	0.9	27	--	--	10.00	32.81
H02392-12000*	12"	304.8	328.0	12.91	10	150	30	450	0.9	27	--	--	10.00	32.81

* Disponible solo bajo pedido
Under order



Manguera para Agua y Líquidos

WATER & LIQUIDS HOSES

MANGUERAS INDUSTRIALES

INDUSTRIAL HOSES

CONSTRUCCIÓN

Tubo Interno: PVC color azul, **Refuerzo:** Mallas textiles, **Cubierta:** PVC color azul
Aplicación: Para ser utilizado para el suministro de agua, gasóleo, etc. en agricultura e industria
Rango de Temperatura: -5°C + 65°C

CONSTRUCTION

Inner Tube: Blue PVC **Reinforcement:** Polyester, **Cover:** Blue PVC,
Application: To be used for supplying water, gas oil etc. in agriculture and industry
Temperature Range: -5°C + 65°C.



PVC PARA DESCARGA DE AGUA- LAY FLAT H02541
 PVC Discharge Hose-Lay Flat

Código Code	Diámetro Interno Hose I.D.		Presión Max. Trab. Working Pressure		Presión Min. Ruptura Burst Pressure		Radio de Curvatura Bending Radius		Rollo Roll	
	in	mm	bar	psi	bar	psi	mm	in	mts	fts
H02541-1000	1"	25.0	4	58	23.0	333	125	4.92	50	164.04
H02541-1500	1.1/2"	38.0	4	58	20.0	290	190	7.48	50	164.04
H02541-2000	2"	50.0	4	58	16.0	232	255	10.04	50	164.04
H02541-3000	3"	76.0	4	58	13.0	188	380	14.96	50	164.04
H02541-4000	4"	101.6	4	58	12.0	174	510	20.08	50	164.04
H02541-6000	6"	152.4	4	58	12.0	174	750	29.53	50	164.04
H02541-8000	8"	203.2	4	58	9.0	130	1010	39.76	50	164.04

CONSTRUCCIÓN

Tubo Interno: 30% PVC, 70% Nitrilo, **Refuerzo:** Mallas textiles, **Cubierta:** PVC color amarillo, **Aplicación:** Lavado industrial, riego, desagüe general, descarga de la bomba y drenaje, **Rango de Temperatura:** -25°C + 80°C

CONSTRUCTION

Inner Tube: 30% PVC, 70% Nitrile, **Reinforcement:** High tensile textile cords
Cover: Yellow PVC, **Application:** Industrial washdown, irrigation, general dewatering, pump discharge and drainage, **Temperature Range:** -25°C + 80°C



DESCARGA DE AGUA- LAY FLAT H02543
 Discharge Hose-Lay Flat

Código Code	Diámetro Interno Hose I.D.		Presión Max. de Trab. Working Pressure		Presión Min. de Ruptura Burst Pressure		Rollo Roll	
	in	mm	bar	psi	bar	psi	mts	fts
H02543-1500	1.1/2"	38	21	300	62.5	900	50	164.4
H02543-2000	2"	52	21	300	62.5	900	50	164.4
H02543-2500	2.1/2"	65	21	300	62.5	900	50	164.4
H02543-3000	3"	76	17	250	51.71	759	50	164.4
H02543-4000	4"	102	14	200	41.37	600	50	164.4
H02543-6000	6"	152	10	150	31.03	450	50	164.4
H02543-8000	8"	200	10	150	31.03	450	50	164.4
H02543-10000	10"	250	10	150	31.03	450	50	164.4



MANGUERAS INDUSTRIALES INDUSTRIAL HOSES

Manguera para Agua y Líquidos WATER & LIQUIDS HOSES

CONSTRUCCIÓN

Tubo Interno: PVC verde resistente a la abrasión y al ozono, **Refuerzo:** PVC rígido color blanco, **Cubierta:** PVC corrugado color verde, **Aplicación:** Succión y descarga por gravedad de agua, agua salada y agua aceitosa en aplicaciones de construcción, agricultura y minería, **Rango de Temperatura:** -5°C + 65°C

CONSTRUCTION

Inner Tube: Green transparent PVC-abrasion and ozone resistant
Reinforcement: White shock resistant rigid PVC, **Cover:** Green transparent PVC-abrasion and ozone resistant, **Application:** Suction, discharge or gravity flow of water, salt water and oily water in construction, agriculture and mining,
Temperature Range: -5°C + 65°C.



PVC PARA SUCCIÓN Y DESCARGA MULTIPROPÓSITO
PVC Multipurpose S&D hose **H02561**

Código Code	Diámetro Interno Hose I.D		Diámetro Externo Hose O.D		Presión Max. de Trab. Working Pressure		Presión Min. de Ruptura Burst Pressure		Radio de Curvatura Bending Radius		Succión Vacuum Rating		Rollo Roll	
	in	mm	mm	in	bar	psi	bar	psi	mm	in	bar	InHg	mts	fts
H02561-1000	1"	25.0	32.0	1.3	8	116	24	348	125	4.92	0.81	24	100	328.08
H02561-1250	1.1/4"	32.0	40.0	1.6	8	116	24	348	160	6.3	0.81	24	100	328.08
H02561-1500	1.1/2"	38.0	46.0	1.8	8	116	24	348	190	7.48	0.81	24	100	328.08
H02561-2000	2"	51.0	60.0	2.4	7	102	21	306	255	10.04	0.81	24	100	328.08
H02561-2500	2.1/2"	64.0	73.0	2.9	6	90	18	270	320	12.6	0.81	24	100	328.08
H02561-3000	3"	76.0	86.0	3.4	5	73	15	219	380	14.96	0.85	25	100	328.08
H02561-4000	4"	102.0	113.0	4.5	5	73	15	219	510	20.08	0.85	25	100	328.08
H02561-6000	6"	152.0	166.0	6.54	4	58	12	174	760	29.92	0.85	25	100	328.08

CONSTRUCCIÓN

Tubo Interno: Copolímero termoplástico color verde, **Refuerzo:** Copolímero termoplástico color verde, **Cubierta:** Copolímero termoplástico color verde
Aplicación: Succión de agua con motobombas portátiles
Rango de Temperatura: -5°C + 50°C

CONSTRUCTION

Inner Tube: Thermoplastic copolymer, **Reinforcement:** Thermoplastic copolymer
Cover: Thermoplastic copolymer, **Application:** Water suction with portable pumps
Temperature Range: -5°C + 50°C.



PVC PARA SUCCIÓN Y DESCARGA MOTOBOMBAS
PVC for Pumps **H02575**

Código Code	Diámetro Interno Hose I.D		Diámetro Externo Hose O.D		Presión Max. Trab. Working Pressure		Presión Min. Ruptura Burst Pressure		Radio de Curvatura Bending Radius		Rollo Roll	
	in	mm	mm	in	bar	psi	bar	psi	mm	in	mts	fts
H02575-1250	1.1/4"	31.8	40.6	1.60	1.02	14.79	3.1	44.37	60	2.36	50	164.04
H02575-1500	1.1/2"	38.1	47.5	1.87	1.02	14.79	3.1	44.37	95	3.74	50	164.04
H02575-2000	2"	50.8	62.0	2.44	1.02	14.79	3.1	44.37	120	4.72	50	164.04
H02575-3000	3"	76.2	90.6	3.57	1.02	14.79	3.1	44.37	240	9.45	50	164.04



Manguera para Agua y Líquidos

WATER & LIQUIDS HOSES

MANGUERAS INDUSTRIALES

INDUSTRIAL HOSES

CONSTRUCCIÓN

Tubo Interno: PVC color Verde, **Refuerzo:** PVC espiralado, **Cubierta:** PVC color Verde
Aplicación: Succión y descarga de agua con motobombas, en líneas de descarga o refrigeración de maquinarias, **Rango de Temperatura:** -5°C + 65 °C

CONSTRUCTION

Inner Tube: Green PVC, **Reinforcement:** PVC Helix, **Cover:** Green PVC
Application: Suction and discharge of water with motor pumps, in discharge or refrigeration machineries lines, **Temperature Range:** -5°C + 65 °C



PVC PARA APLICACIONES AGRÍCOLAS
 PVC for agricultural applications **H02587**

Código Code	Diámetro Interno Hose I.D		Diámetro Externo Hose O.D		Presión Max. de Trab. Working Pressure		Presión Min. de Ruptura Burst Pressure		Radio de Curvatura Bending Radius		Succión Vacuum Rating		Rollo Roll	
	in	mm	mm	in	bar	psi	bar	psi	mm	in	bar	InHg	mts	fts
H02587-1250	1.1/4"	32.0	38.0	1.50	8.00	116	24.0	348	160	6.3	0.81	24	30.48	100
H02587-1500	1.1/2"	38.0	45.0	1.77	8.00	116	24.0	348	190	7.48	0.81	24	30.48	100
H02587-2000	2"	51.0	58.0	2.28	7.00	102	21.0	306	255	10.04	0.85	24	30.48	100
H02587-3000	3"	76.0	84.0	3.31	5.00	73	15.0	219	380	14.96	0.85	25	30.48	100
H02587-4000	4"	102	110.0	4.33	5.00	73	15.0	219	510	20.08	0.85	25	30.48	100

CONSTRUCCIÓN

Tubo Interno: Copolímero termoplástico, **Refuerzo:** Copolímero termoplástico color negro-azul, **Cubierta:** Copolímero termoplástico color negro-azul
Aplicación: Aspiración y limpieza de piscinas, **Rango de Temperatura:** 5°C + 50°C

CONSTRUCTION

Inner Tube: Thermoplastic copolymer, **Reinforcement:** Blue-black thermoplastic copolymer, **Cover:** Blue-black thermoplastic copolymer,
Application: Vacuum and cleaning pools, **Temperature Range:** 5°C + 50°C



PVC PARA PISCINA
 PVC for pool Applications **H02595**

Código Code	Diámetro Interno Hose I.D		Diámetro Externo Hose O.D		Presión Max.Trab. Working Pressure		Presión Min.Ruptura Burst Pressure		Radio de Curvatura Bending Radius		Rollo Roll	
	in	mm	mm	in	bar	psi	bar	psi	mm	in	mts	fts
H02595-1500	1.1/2"	38.1	47.00	1.85	0.91	13.20	2.73	47.79	120.00	4.72	30	98.42



MANGUERAS HOSES

H02307 / Serv. General Aire - Agua - Aceite
General Service Air - Water - Oil A.7

H02308 / Serv. General Aire - Agua
General Service Air - Water A.7

H02310 / Aire - Agua - Trabajo Pesado
Heavy Duty General Service Air - Water A.8

H02311 / Aire - Agua - Trabajo Pesado
Heavy Duty General Service Air - Water A.8

MINERÍA

Mining



MANGUERAS INDUSTRIALES INDUSTRIAL HOSES

Manguera para Minería MINING HOSES

CONSTRUCCIÓN

Tubo Interno: Mezcla de goma sintética resistente al aceite Nitrilo-Butadieno. No Conductiva. **Refuerzo:** Mallas textiles, **Cubierta:** Mezcla de goma sintética resistente al aceite y al ozono, **Aplicación:** Aire, Agua y fluidos hidráulicos a base de petróleo y agua, **Rango de Temperatura:** -40°C + 100°C

CONSTRUCTION

Inner Tube: Oil resistant synthetic nitrile-butadiene rubber. non-conductive
Reinforcement: High tensile textile cords, **Cover:** Oil and weather resistant synthetic rubber, **Application:** Petroleum and water base hydraulic fluids, air and water, **Temperature Range:** -40°C + 100°C



SERVICIO GENERAL AIRE-AGUA-ACEITE MINERÍA
Mining General Service Air-Water-Oil **H02307**

Código Code	Diámetro Interno Hose I.D		Diámetro Externo Hose O.D		Presión Max. Trab. Working Pressure		Presión Min. Ruptura Burst Pressure		Radio de Curvatura Bending Radius		Rollo Roll	
	in	mm	mm	in	bar	psi	bar	psi	mm	in	mts	fts
H02307-250	1/4"	6.5	15.5	0.6	34.5	500	104	1500	70	2.76	100.00	328.08
H02307-380	3/8"	9.8	18.5	0.7	34.5	500	104	1500	80	3.15	100.00	328.08
H02307-500	1/2"	12.8	22.0	0.9	34.5	500	104	1500	110	4.33	100.00	328.08
H02307-750	3/4"	19.1	29.5	1.2	34.5	500	104	1500	170	6.69	50.00	164.04
H02307-1000	1"	25.4	36.5	1.4	34.5	500	104	1500	250	9.84	50.00	164.04
H02307-1250	1.1/4"	31.8	44.0	1.7	34.5	500	104	1500	265	10.43	40.00	131.23
H02307-1500	1.1/2"	38.1	50.0	2.0	34.5	500	104	1500	335	13.19	40.00	131.23
H02307-2000	2"	51.0	66.0	2.6	34.5	500	104	1500	610	24.02	40.00	131.23

CONSTRUCCIÓN

Tubo Interno: Mezcla de goma sintética NR/SBR. No Conductiva.
Refuerzo: Mallas textiles. **Cubierta:** Mezcla de goma sintética resistente al ozono,
Aplicación: Aire comprimido para aplicaciones de trabajo pesado en minería, construcción e industrias
Rango de Temperatura: -25°C + 70°C

CONSTRUCTION

Inner Tube: Synthetic NR/SBR blended rubber. non-conductive
Reinforcement: High tensile textile cords **Cover:** Weather resistant synthetic rubber,
Application: Compressed air designed for heavy duty mining, industrial and construction applications
Temperature Range: -25°C + 70°C



SERVICIO GENERAL AIRE-AGUA MINERÍA
Mining General Service Air-Water **H02308**

Código Code	Diámetro Interno Hose I.D		Diámetro Externo Hose O.D		Presión Max. Trab. Working Pressure		Presión Min. Ruptura Burst Pressure		Radio de Curvatura Bending Radius		Rollo Roll	
	in	mm	mm	in	bar	psi	bar	psi	mm	in	mts	fts
H02308-500	1/2"	12.7	22.0	0.9	20	300	60	900	140	5.51	50.00	164.04
H02308-750	3/4"	19.1	29.0	1.1	20	300	60	900	210	8.27	50.00	164.04
H02308-1000	1"	25.5	35.5	1.4	20	300	60	900	280	11.02	50.00	164.04
H02308-1250	1.1/4"	32.0	46.0	1.8	20	300	60	900	350	13.78	40.00	131.23
H02308-1500	1.1/2"	38.0	53.0	2.1	20	300	60	900	420	16.54	40.00	131.23
H02308-2000	2"	51.0	66.0	2.6	20	300	60	900	610	24.02	40.00	131.23
H02308-3000	3"	76.0	93.0	3.7	20	300	60	900	950	37.40	20.00	65.62
H02308-4000*	4"	102.0	114.0	4.5	20	300	60	900	1200	47.24	20.00	65.62

*Refuerzo: 1 malla de acero

*Reinforcement: One wire braided layer



Manguera para Minería

MINING HOSES

MANGUERAS INDUSTRIALES

INDUSTRIAL HOSES

CONSTRUCCIÓN

Tubo Interno: Mezcla de goma sintética NR/SBR, Resistente al aceite,
Refuerzo: Dos mallas de acero trenzadas, **Cubierta:** Mezcla de goma sintética resistente al ozono
Aplicación: Aire comprimido a altas presiones para aplicaciones de trabajo pesado, donde se requiera una larga durabilidad: Fábricas, agricultura, minas, industrias de petróleo y gas
Rango de Temperatura: -40°C + 100°C

CONSTRUCTION

Inner Tube: Synthetic NR/SBR blended rubber, Oil resistant **Reinforcement:** Two layers of steel wire braided, **Cover:** Weather resistant synthetic rubber, **Application:** High pressure compressed air and water heavy duty applications, where long service life is required: Industries, agriculture, mining, petroleum and gas industries
Temperature Range: -40°C + 100°C



SERVICIO GENERAL AIRE-AGUA TRABAJO PESADO
 Heavy Duty General Service Air-Water **H02310**

Código Code	Diámetro Interno Hose I.D.			Diámetro Externo Hose O.D.			Presión Max. Trab. Working Pressure		Presión Min. Ruptura Burst Pressure		Radio de Curvatura Bending Radius		Rollo Roll	
	dn	in	mm	mm	in	bar	psi	bar	psi	mm	in	mts	fts	
H02310-500	8	1/2"	12.7	23.1	0.9	41	600	123	1800	140	5.51	50	164.04	
H02310-750	12	3/4"	19.1	31	1.2	41	600	123	1800	210	8.27	50	164.04	
H02310-1000	16	1"	25.4	37.9	1.5	41	600	123	1800	280	11.02	50	164.04	
H02310-1250	20	1.1/4"	31.8	46	1.8	41	600	123	1800	350	13.98	40	131.23	
H02310-1500	24	1.1/2"	38.1	51.8	2	41	600	123	1800	420	16.54	40	131.23	
H02310-2000	32	2"	50.8	66	2.6	41	600	123	1800	560	22.05	40	131.23	
H02310-3000	48	3"	63.5	80	3.1	41	600	123	1800	700	27.56	40	131.23	
H02310-4000	64	4"	102.5	120	4.72	41	600	123	1800	1000	39.37	20	65.62	

CONSTRUCCIÓN

Tubo Interno: Mezcla de goma sintética NR/SBR, Resistente al aceite, **Refuerzo:** Dos mallas de acero trenzadas, **Cubierta:** Mezcla de goma sintética resistente al ozono
Aplicación: Aire comprimido a altas presiones para aplicaciones de trabajo pesado, donde se requiera una larga durabilidad y máxima seguridad de trabajo
Rango de Temperatura: -40°C + 100°C

CONSTRUCTION

Inner Tube: Synthetic NR/SBR blended rubber, Oil resistant **Reinforcement:** Two layers of steel wire braided, **Cover:** Weather resistant synthetic rubber, **Application:** High pressure compressed air and water heavy duty applications, where long service life and maximum safety is required, **Temperature Range:** -40°C + 100°C



SERVICIO GENERAL AIRE-AGUA TRABAJO PESADO
 Heavy Duty General Service Air-Water **H02311**

Código Code	Diámetro Interno Hose I.D.			Diámetro Externo Hose O.D.			Presión Max. Trab. Working Pressure		Presión Min. Ruptura Burst Pressure		Radio de Curvatura Bending Radius		Rollo Roll	
	dn	in	mm	mm	in	bar	psi	bar	psi	mm	in	mts	fts	
H02311-500	8	1/2"	12.7	23.1	0.9	69	1000	207	3000	140	5.51	50	164.04	
H02311-750	12	3/4"	19.1	31	1.2	69	1000	207	3000	210	8.27	50	164.04	
H02311-1000	16	1"	25.4	37.9	1.5	69	1000	207	3000	280	11.02	50	164.04	
H02311-1250	20	1.1/4"	31.8	46	1.8	69	1000	207	3000	350	13.98	40	131.23	
H02311-1500	24	1.1/2"	38.1	51.8	2	69	1000	207	3000	420	16.54	40	131.23	
H02311-2000	32	2"	50.8	66	2.6	69	1000	207	3000	560	22.05	40	131.23	
H02310-4000	64	4"	102.5	4.72	120	69	1000	207	3000	1000	39.37	20	65.62	



**MANGUERA
HOSE**

H02126 / Soldadura Oxicorte
Twin Line Welding (Oxygen / Acetilene)..... A.9

**SOLDADURA
Welding**



MANGUERAS INDUSTRIALES INDUSTRIAL HOSES

Manguera para Soldadura WELDING HOSE

CONSTRUCCIÓN

Tubo Interno: Mezcla de goma sintética SBR, **Refuerzo:** Múltiples mallas textiles

Cubierta: Mezcla de goma sintética SBR/EPDM

Aplicación: Especial para equipos de oxicorte, **Rango de Temperatura:** -25°C + 75°C

CONSTRUCTION

Inner Tube: Synthetic SBR blended rubber, **Reinforcement:** High tensile textile cords

Cover: Synthetic EPDM/SBR blended rubber

Application: Recommended for use on Oxi-Acetylene welding equipment

Temperature Range: -25°C + 75°C



SOLDADURA (OXICORTE)
Twin Line Welding (Oxygen/Acetylene) H02126

Código Code	Diámetro Interno Hose I.D.		Diámetro Externo Hose O.D.		Presión Max. de Trab. Working Pressure		Presión Min. Ruptura Burst Pressure		Rollo Roll	
	in	mm	mm	in	bar	psi	bar	psi	mts	fts
H02126-250	1/4"	6.35	13.0	0.47	20	300	60	900	100.00	328.08
H02126-380	3/8"	9.53	17.0	0.67	20	300	60	900	100.00	328.08

CONSTRUCCIÓN

Tubo Interno: Mezcla de SBR, **Refuerzo:** textil, **Cubierta:** Mezcla de SBR, lisa

de color rojo, **Aplicación:** Adecuado para la transferencia de gas acetileno para

aplicaciones de soldadura y corte con gas, **Rango de Temperatura:** -20 C~ +70 C

CONSTRUCTION

Inner Tube: SBR blend, **Reinforcement:** textile, **Cover:** SBR blend, **Application:** Suitable

for the transfer of acetylene gas for welding and gas cutting applications, smooth surface

color red, **Temperature Range:** -20°C to +70°C



MANGUERA PARA ACETILENO
Hose for acetilene H02127

Código Code	Diámetro Interno Hose I.D.		Diámetro Externo Hose O.D.		Presión Max. de Trab. Working Pressure		Presión Min. Ruptura Burst Pressure		Rollo Roll	
	in	mm	mm	in	bar	psi	bar	psi	mts	fts
H02127-380	3/8"	9.53	17	43/64	20	300	60	900	100	328.08

CONSTRUCCIÓN

Tubo Interno: Mezcla de SBR, **Refuerzo:** textil, **Cubierta:** Mezcla de SBR,

Aplicación: Adecuado para la transferencia de oxígeno para aplicaciones de soldadura y corte con gas, cubierta lisa color verde,

Rango de Temperatura: -20 C~ +70 C

CONSTRUCTION

Inner Tube: SBR blend, **Reinforcement:** textile, **Cover:** SBR blend, **Application:** Suitable

for the transfer of oxygen gas for welding and gas cutting applications, smooth surface

color green, **Temperature Range:** -20°C to +70°C



MANGUERA PARA OXÍGENO
Hose for oxygen H02128

Código Code	Diámetro Interno Hose I.D.		Diámetro Externo Hose O.D.		Presión Max. de Trab. Working Pressure		Presión Min. Ruptura Burst Pressure		Rollo Roll	
	in	mm	mm	in	bar	psi	bar	psi	mts	fts
H02128-380	3/8"	9.53	17	43/64	20	300	60	900	100	328.08



MANGUERAS HOSES

H02216 / Succión y Descarga de Combustible
Fuel S & D (Tank Truck Hose) A.10

H02132 / Gas LPG
LPG Gas A.10

H02133 / Gas LPG (Amarilla)
Yellow LPG Gas A.11

HIDROCARBUROS
Hydrocarbons

MANGUERAS INDUSTRIALES INDUSTRIAL HOSES

Manguera para Hidrocarburos HYDROCARBONS HOSES

CONSTRUCCIÓN

Tubo Interno: NBR conductivo color negro, **Refuerzo:** Mallas Textiles con alambre de acero en espiral, **Cubierta:** Mezcla de goma sintética CR/NBR

Aplicación: Succión y descarga de gasolina. Especialmente diseñada para el trasegado de combustible y otras aplicaciones industriales, **Rango de Temperatura:** -29°C + 71°C

CONSTRUCTION

Inner Tube: Black conductive NBR, **Reinforcement:** High tensile textile cords with one helix wire, **Cover:** Synthetic CR/NBR blended rubber,

Application: Fuel and oil suction and delivery. Specially designed for tank truck and general industrial applications, **Temperature Range:** -29°C + 71°C



SUCCIÓN Y DESCARGA DE COMBUSTIBLE
Fuel Suction & Discharge (Tank Truck Hose) H02216

Código Code	Diámetro Interno Hose I.D.		Diámetro Externo Hose O.D.		Presión Max. de Trab. Working Pressure		Presión Min. de Rup. Burst Pressure		Succión Vacuum Rating		Radio de Curvatura Bending Radius		Rollo Roll	
	in	mm	mm	in	bar	psi	bar	psi	bar	InHg	mm	in	mts	fts
H02216-750	3/4"	19.1	29.0	1.14	10	150	30	450	0.9	27	85	3.35	40.00	131.23
H02216-1000	1"	25.0	35.0	1.38	10	150	30	450	0.9	27	105	4.13	40.00	131.23
H02216-1250	1.1/4"	31.8	42.0	1.65	10	150	30	450	0.9	27	130	5.12	40.00	131.23
H02216-1500	1.1/2"	38.0	49.8	1.89	10	150	30	450	0.9	27	155	6.1	40.00	131.23
H02216-2000	2"	50.0	63.8	2.48	10	150	30	450	0.9	27	230	9.06	40.00	131.23
H02216-2500	2.1/2"	63.5	76.9	3.03	10	150	30	450	0.9	27	280	11.02	40.00	131.23
H02216-3000	3"	76.0	90.2	3.54	10	150	30	450	0.9	27	335	13.19	40.00	131.23
H02216-4000	4"	101.6	117.5	4.65	10	150	30	450	0.9	27	440	17.32	40.00	131.23
H02216-6000	6"	152.4	170.0	6.69	10	150	30	450	0.9	27	805	31.69	30.00	98.43
H02216-8000	8"	203.2	224.0	8.82	10	150	30	450	0.9	27	1280	50.39	10.00	32.81

CONSTRUCCIÓN

Tubo Interno: Mezcla flexible de NBR/PVC con alambre de cobre para aterramiento incorporado en la pared de la manguera. **Refuerzo:** Mallas de poliéster incorporado en la pared de la manguera. **Cubierta:** Mezcla rígida de NBR/PVC en forma de anillo helicoidal **Aplicación:** Succión y descarga de gasolina, diesel, kerosene, y combustibles. **Rango de Temperatura:** -5°C +65°C

CONSTRUCTION

Inner Tube: Flexible de NBR/PVC with embedded ground wire in the hose
Reinforcement: Polyester yarn, **Cover:** Rigid NBR/PVC with a sturdy clockwise helix **Application:** Use to deliver gasoline, diesel, fuel, kerosene and fuel with aromatic content to 40%.

Temperature Range: -5°C +65°C



SUCCIÓN Y DESCARGA PVC / NBR
Fuel Suction and Discharge PVC / NBR H02316

Código Code	Diámetro Interno Hose I.D.		Diámetro Externo Hose O.D.		Presión Max. de Trab. Working Pressure		Presión Min. de Rup. Burst Pressure		Succión Vacuum Rating		Radio de Curvatura Bending Radius		Rollo Roll	
	in	mm	mm	in	bar	psi	bar	psi	bar	InHg	mm	in	mts	fts
H02316-2000	2"	50.8	62	2.68	4.83	70	14.49	210	0.97	28.6	127	5	30.48	100
H02216-1000	3"	76.2	90	3.54	4.48	65	13.44	195	0.97	28.6	152.4	6	30.48	100
H02216-1250	4"	101.6	119	4.69	4.48	65	13.44	195	0.97	28.6	203.2	8	30.48	100

Manguera para Hidrocarburos

HYDROCARBONS HOSES

MANGUERAS INDUSTRIALES

INDUSTRIAL HOSES

CONSTRUCCIÓN

Tubo Interno: NBR color negro, **Refuerzo:** Múltiples mallas textiles,
Cubierta: Mezcla de goma sintética EPDM/NBR color negro perforada,
Aplicación: Paso de LPG en diferentes aplicaciones: parrilleras, cocinas, calentadores, etc.
Rango de Temperatura: -40°C + 82°C

CONSTRUCTION

Inner Tube: Black NBR Blended, **Reinforcement:** High tensile textile cords
Cover: Black Synthetic EPDM/NBR blended rubber. Pinpricking,
Application: LPG delivery in different applications: bobtail, grills, cookers and heaters,
Temperature Range: -40°C + 82°C



MANGUERA PARA LPG
LPG Gas Hose **H02132**

Código Code	Diámetro Interno Hose I.D		Diámetro Externo Hose O.D		Presión Max. Trab. Working Pressure		Presión Min. Ruptura Burst Pressure		Radio de Curvatura Bending Radius		Rollo Roll	
	in	mm	mm	in	bar	psi	bar	psi	mm	in	mts	fts
H02132-250	1/4"	6.35	14.2	0.50	23.30	350	70.00	1050	50	1.97	150	492.00
H02132-380	3/8"	10.0	19.0	0.75	24.13	350	72.39	1050	55	2.17	150	492.13
H02132-500	1/2"	13.0	23.8	0.94	24.13	350	72.39	1050	75	2.95	100	328.08
H02132-750	3/4"	19.0	31.8	1.25	24.13	350	72.39	1050	100	3.94	100	328.08
H02132-1000	1"	25.0	38.1	1.5	24.13	350	72.39	1050	160	6.3	100	328.08
H02132-2000	2"	50.0	67.0	2.64	24.13	350	72.39	1050	295	11.61	30	98.43

CONSTRUCCIÓN

Tubo Interno: NBR color negro, **Refuerzo:** Múltiples mallas textiles
Cubierta: Mezcla de goma sintética EPDM/NBR color amarillo perforada
Aplicación: Paso de LPG en diferentes aplicaciones: parrilleras, cocinas, calentadores etc.
Rango de Temperatura: -40°C + 70°C

CONSTRUCTION

Inner Tube: Black NBR blended, **Reinforcement:** High tensile textile cords
Cover: Yellow Synthetic EPDM/NBR blended rubber. Pinpricking
Application: LPG delivery in different applications: bobtail, grills, cookers and heaters
Temperature Range: -40°C + 70°C



MANGUERA PARA LPG
LPG Gas Hose **H02133**

Código Code	Diámetro Interno Hose I.D		Diámetro Externo Hose O.D		Presión Max. Trab. Working Pressure		Presión Min. Ruptura Burst Pressure		Radio de Curvatura Bending Radius		Rollo Roll	
	in	mm	mm	in	bar	psi	bar	psi	mm	in	mts	fts
H02133-380	3/8"	9.5	19.0	0.75	24.13	350	72.39	1050	55	2.17	150	492.13
H02133-500	1/2"	12.7	23.8	0.94	24.13	350	72.39	1050	75	2.95	100	328.08
H02133-750	3/4"	19.1	31.8	1.25	24.13	350	72.39	1050	100	3.94	100	328.08
H02133-1000	1"	25.4	38.1	1.5	24.13	350	72.39	1050	160	6.3	100	328.08



MANGUERAS HOSES

H02264 / Vapor
Steam Hose A.12

H02188 / Succión y Descarga Agua Caliente
Hot Water S & D Hose A.12

H02410 / Radiador
Radiator Hose A.13

H02211 / Tubo de Acero Inoxidable
Stainless Steel Tube A.14

AGUA CALIENTE Y VAPOR

Hot Water & Steam



MANGUERAS INDUSTRIALES INDUSTRIAL HOSES

Manguera para Agua Caliente y Vapor HOT WATER & STEAM HOSES

CONSTRUCCIÓN

Tubo Interno: Mezcla de goma sintética EPDM, **Refuerzo:** Dos mallas de acero
Cubierta: Mezcla de goma sintética EPDM color Rojo, **Aplicación:** Para el transporte de vapor en industrias químicas, de petróleo, alimentos, madera y procesamiento
Rango de Temperatura: -29°C + 232 °C

CONSTRUCTION

Inner Tube: Red synthetic EPDM blended rubber, **Reinforcement:** Two plies of steel wire
Cover: Red synthetic EPDM blended rubber, **Application:** For the conveyance of steam in chemical/petroleum, food, lumber, pulp and processing industries
Temperature Range: -29°C + 232 °C



MANGUERA PARA VAPOR
Steam Hose H02264

Código Code	Diámetro Interno Hose I.D		Diámetro Externo Hose O.D		Presión Max. Trab. Working Pressure		Presión Min. Ruptura Burst Pressure		Radio de Curvatura Bending Radius		Rollo Roll	
	in	mm	mm	in	bar	psi	bar	psi	mm	in	mts	fts
H02264-500	1/2"	13.0	25.7	1.01	17	250	68	986	200	7.87	100	328.08
H02264-750	3/4"	19.0	33.7	1.33	17	250	68	986	290	11.42	50	164.04
H02264-1000	1"	25.0	40.7	1.60	17	250	68	986	380	14.96	50	164.04

CONSTRUCCIÓN

Tubo Interno: Goma sintética EPDM, resistente al calor **Refuerzo:** Una malla de acero
Cubierta: Goma sintética EPDM color rojo **Aplicaciones:** Para transporte de vapor en industrias químicas, de petróleo, alimentos, madera y procesamiento
Rango de Temperatura: ≤210°C

CONSTRUCTION

Inner Tube: Red synthetic EPDM blended rubber, **Reinforcement:** Two plies of steel wire
Cover: Red synthetic EPDM blended rubber, **Application:** For the conveyance of steam in chemical/petroleum, food, lumber, pulp and processing industries,
Temperature Range: ≤210°C



MANGUERA PARA VAPOR
Steam Hose H02265

Código Code	Diámetro Interno Hose I.D		Diámetro Externo Hose O.D		Presión Max. Trab. Working Pressure		Presión Min. Ruptura Burst Pressure		Radio de Curvatura Bending Radius		Rollo Roll	
	in	mm	mm	in	bar	psi	bar	psi	mm	in	mts	fts
H02265-1000	1"	25	36	1.42	17	250	170	2500	250	9.84	60	196.85



Manguera para Agua Caliente y Vapor

HOT WATER & STEAM HOSES

MANGUERAS INDUSTRIALES

INDUSTRIAL HOSES

CONSTRUCCIÓN

Tubo Interno: Mezcla de goma sintética EPDM, **Refuerzo:** Malla de fibra sintética con alambre helicoidal, **Cubierta:** Mezcla de goma sintética EPDM

Aplicación: Para trasiego de fluidos, agua caliente, en aplicaciones industriales, construcción y agrícola. Muy flexible, ideal para usar en espacios reducidos

Rango de Temperatura: -20°C + 100 °C

CONSTRUCTION

Inner Tube: Synthetic EPDM blended rubber, **Reinforcement:** Plies of synthetic cord with helix wire, **Cover:** Synthetic EPDM blended rubber, **Application:** Used for fluids decanted in this case hot water. For industrial, construction and agricultural applications. Very flexible, for use in confined spaces, **Temperature Range:** -20°C + 100 °C



SUCCIÓN Y DESCARGA DE AGUA CALIENTE
Hot Water Suction & Discharge **H02188**

Código Code	Diámetro Interno Hose I.D.		Diámetro Externo Hose O.D.		Presión Max. de Trab. Working Pressure		Presión Min. de Ruptura Burst Pressure		Radio de Curvatura Bending Radius		Succión Vacuum Rating		Rollo Roll	
	in	mm	mm	in	bar	psi	bar	psi	mm	in	bar	InHg	mts	fts
H02188-750	3/4"	19.1	29.0	1.14	10	150	30	450	50	1.97	0.9	27	60	196.85
H02188-1000	1"	25.0	35.0	1.38	10	150	30	450	60	2.36	0.9	27	60	196.85
H02188-2000	2"	50.8	63.0	2.48	10	150	30	450	140	5.51	0.9	27	60	196.85

CONSTRUCCIÓN

Tubo Interno: Mezcla de goma sintética EPDM/NR, **Refuerzo:** Múltiples mallas textiles **Cubierta:** Mezcla de goma sintética EPDM/NR, **Aplicación:** Para paso de agua caliente en motores de uso industrial y equipos pesados, **Rango de Temperatura:** -20°C + 100°C

CONSTRUCTION

Inner Tube: Synthetic EPDM/NR blended rubber, **Reinforcement:** High tensile textile cords **Cover:** Synthetic EPDM/NR blended rubber, **Application:** For hot water passage in industrial engines and heavy duty equipment, **Temperature Range:** -20°C + 100°C



MANGUERA PARA RADIADOR
Radiator Hose **H02410**

Código Code	Diámetro Interno Hose I.D.		Diámetro Externo Hose O.D.		Presión Max. Trab. Working Pressure		Presión Min. Ruptura Burst Pressure		Radio de Curvatura Bending Radius		Rollo Roll	
	in	mm	mm	in	bar	psi	bar	psi	mm	in	mts	fts
H02410-875	7/8"	22.10	33.0	1.30	4.83	70	14.48	210	125	4.92	20	65.62
H02410-1000	1"	25.00	36.0	1.42	4.83	70	14.48	210	140	5.51	20	65.62
H02410-1125	1.1/8"	28.50	38.0	1.50	4.83	70	14.48	210	150	5.91	20	65.62
H02410-1250	1.1/4"	31.75	44.0	1.73	4.83	70	14.48	210	170	6.69	20	65.62
H02410-1380	1.3/8"	34.80	48.0	1.89	4.83	70	14.48	210	185	7.28	20	65.62
H02410-1500	1.1/2"	38.10	51.0	2.01	4.83	70	14.48	210	200	7.87	20	65.62
H02410-1630	1.5/8"	41.15	54.0	2.13	4.83	70	14.48	210	215	8.46	20	65.62
H02410-1750	1.3/4"	44.45	57.0	2.24	4.83	70	14.48	210	230	9.06	20	65.62
H02410-1880	1.7/8"	47.50	60.0	2.36	4.83	70	14.48	210	240	9.45	20	65.62
H02410-2000	2"	50.80	63.0	2.48	4.83	70	14.48	210	285	9.65	20	65.62
H02410-2250	2.1/4"	57.15	70.0	2.76	4.83	70	14.48	210	320	12.6	20	65.62
H02410-2380	2.3/8"	60.20	73.0	2.87	4.83	70	14.48	210	335	13.19	20	65.62
H02410-2500	2.1/2"	63.50	76.0	2.99	4.83	70	14.48	210	350	13.78	20	65.62
H02410-2750	2.3/4"	69.85	82.0	3.23	4.83	70	14.48	210	380	14.96	20	65.62
H02410-3000	3"	76.20	90.0	3.54	4.83	70	14.48	210	415	16.34	20	65.62
H02410-3500	3.1/2"	88.90	103.0	4.06	4.83	70	14.48	210	480	18.9	20	65.62
H02410-4000	4"	101.60	116.0	4.57	4.83	70	14.48	210	545	21.46	20	65.62



MANGUERAS INDUSTRIALES INDUSTRIAL HOSES

Manguera para Agua Caliente y Vapor HOT WATER & STEAM HOSES

CONSTRUCCIÓN

Tubo Interno: Tubo helicoidal de Acero Inoxidable 316ss, **Cubierta:** Malla de Acero Inoxidable 304ss **Aplicación:** En hornos industriales, calderas y transporte de vapor y agua caliente
Rango de Temperatura: -200°C + 700 °C

CONSTRUCTION

Inner Tube: 316ss stainless steel helicoidal tube, **Cover:** 304ss stainless steel mesh
Application: Used in industrial ovens, boilers, and transportation of steam and hot water
Temperature Range: -200°C + 700 °C



H02211

TUBO DE ACERO INOXIDABLE 316SS CON MALLA
DE ACERO INOXIDABLE 304SS
316ss Stainless Steel tube with Stainless Steel Mesh 304ss

Código Code	Diámetro Interno Hose I.D		Diámetro Externo Hose O.D		Presión Max. Trab. Working Pressure		Presión Min. Ruptura Burst Pressure		Espesor de Paredes Wall Thickness		Radio de Curvatura Bending Radius		Rollo Roll	
	in	mm	mm	in	bar	psi	bar	psi	mm	in	mm	in	mts	fts
H02211-250	1/4"	6.2	10.5	0.41	98	1422	294	4266	0.18	0.01	100	3.93	50	164.04
H02211-380	3/8"	10.3	15.5	0.61	88	1280	264	3840	0.18	0.01	150	5.9	50	164.04
H02211-500	1/2"	12.2	18	0.71	78	1137	235	3411	0.18	0.01	200	7.87	50	164.04
H02211-580	5/8"	16.2	23	0.91	68	995	205	2985	0.2	0.01	200	7.87	50	164.04
H02211-750	3/4"	20.2	28.5	1.12	62	910	188	2730	0.2	0.01	200	7.87	50	164.04
H02211-1000	1"	25.4	33.5	1.32	49	711	147	2133	0.25	0.01	200	7.87	50	164.04
H02211-1250	1.1/4"	34.3	43	1.69	39	568	117	1704	0.25	0.01	250	9.84	50	164.04
H02211-1500	1.1/2"	40.1	51.5	2.02	29	426	88	1278	0.25	0.01	250	9.84	50	164.04
H02211-2000	2"	50.3	62	2.44	27	398	82	1194	0.28	0.01	350	13.77	50	164.04
H02211-2500	2.1/2"	65.7	83	3.26	23	341	70	1023	0.3	0.01	410	16.14	25	82.02
H02211-3000	3"	80.3	97.5	3.83	17	256	53	768	0.3	0.01	450	17.71	25	82.02
H02211-4000	4"	100.8	119.5	4.7	15	227	47	681	0.3	0.01	560	22	25	82.02
H02211-5000	5"	125.4	153	6.02	11	170	35	520	0.4	0.02	660	25.98	10	32.81
H02211-6000	6"	150.8	178	7	9.8	142	29	426	0.4	0.02	815	32.08	10	32.81
H02211-8000	8"	197	228.5	8.99	7.8	113	23	339	0.5	0.02	1015	39.96	10	32.81



MANGUERAS HOSES

H02570 / PVC para Succión FDA
FDA PVC Suction Hose A.15

H02558 / Tubo de PVC - FDA y NSF
FDA and NSF PVC Tubing A.15

H02581 / PVC Grado Alimenticio
FDA PVC A.16

H02582 / PVC para Bebidas
PVC Beverages A.16

ALIMENTOS
Food



MANGUERAS INDUSTRIALES INDUSTRIAL HOSES

Manguera para Alimentos FOOD HOSES

CONSTRUCCIÓN

Tubo Interno: PVC transparente grado FDA, **Refuerzo:** Alambre de acero
Cubierta: PVC transparente grado FDA, **Aplicación:** Distribución de alimentos y bebidas, aire, agua, refrigerante, lavado de coches, sistemas de agua desionizada y otras aplicaciones que requieran inspección visual, **Rango de Temperatura:** -21°C + 60 °C

CONSTRUCTION

Inner Tube: Crystal Clear PVC FDA grade, **Reinforcement:** Steel spring wire ,
Cover: Crystal Clear PVC FDA grade, **Application:** Food and beverage dispensing, air, water, coolant, car wash, deionized water systems and other visual flow inspection
Temperature Range: -21°C + 60 °C



PVC PARA SUCCIÓN FDA
FDA PVC Suction Hose **H02570**

Código Code	Diámetro Interno Hose I.D		Diámetro Externo Hose O.D		Presión Max. de Trab. Working Pressure		Presión Min. de Rup. Burst Pressure		Radio de Curvatura Bending Radius		Succión Vacuum Rating		Rollo Roll	
	in	mm	mm	in	bar	psi	bar	psi	mm	in	bar	InHg	mts	fts
H02570-500	1/2"	12.0	18.0	0.71	8.00	116	24.0	348	60	2.36	0.81	24	100	328.81
H02570-630	5/8"	16.0	21.0	0.83	8.00	116	24.0	348	80	3.15	0.81	24	100	328.81
H02570-750	3/4"	19.0	25.0	0.98	8.00	116	24.0	348	95	3.74	0.81	24	50	164.04
H02570-1000	1"	25.0	33.0	1.30	7.03	102	21.1	306	125	4.92	0.81	24	50	164.04
H02570-1250	1.1/4"	32.0	40.0	1.57	5.03	73	15.1	219	160	6.3	0.81	24	40	131.23
H02570-1500	1.1/2"	38.0	47.0	1.85	5.03	73	15.1	219	190	7.48	0.81	24	40	131.23
H02570-2000	2"	51.0	61.0	2.40	5.03	73	15.1	219	255	10.04	0.81	24	40	131.23
H02570-2500	2.1/2"	64.0	75.0	2.95	4.00	58	12.0	174	320	12.6	0.81	24	20	65.62
H02570-3000	3"	76.0	90.0	3.54	4.00	58	12.0	174	380	14.96	0.84	25	20	65.62
H02570-4000	4"	102.0	118.0	4.65	3.03	44	9.1	132	510	20.08	0.84	25	10	32.81
H02570-5000	5"	127.0	141.0	5.55	3.03	44	9.1	132	635	25	0.84	25	10	32.81
H02570-6000	6"	152.0	168.0	6.61	3.03	44	9.1	132	760	29.92	0.91	27	10	32.81
H02570-8000	8"	200.0	224.0	8.82	3.03	44	9.1	132	1000	39.37	0.91	27	10	32.81

CONSTRUCCIÓN

Tubo Interno: PVC transparente, **Cubierta:** PVC transparente, **Aplicación:** Usos generales. Esterilizada con solución de soda al 5%, **Rango de Temperatura:** -5°C + 65 °C

CONSTRUCTION

Inner Tube: Transparent PVC, **Cover:** Transparent PVC, **Application:** General purpose sterilized with 5% soda solution, **Temperature Range:** -5°C + 65 °C



TUBO DE PVC -FDA Y NSF
FDA-NSF PVC Tubing **H02558**

Código Code	Diámetro Interno Hose I.D		Diámetro Externo Hose O.D		Presión Max. Trab. Working Pressure		Presión Min. Ruptura Burst Pressure		Radio de Curvatura Bending Radius		Rollo Roll	
	in	mm	mm	in	bar	psi	bar	psi	mm	in	mts	fts
H02558-125	1/8"	3.0	5.0	0.20	1.5	22	4.5	66	15	0.59	100	328.08
H02558-187	3/16"	5.0	7.0	0.28	1.5	22	4.5	66	25	0.98	100	328.08
H02558-250	1/4"	6.0	8.0	0.31	1.5	22	4.5	66	30	1.18	100	328.08
H02558-312	5/16"	8.0	10.0	0.39	1.5	22	4.5	66	40	1.57	100	328.08
H02558-380	3/8"	9.5	12.7	0.50	1.5	22	4.5	66	48	1.89	50	164.04
H02558-500	1/2"	12.7	15.9	0.63	1.5	22	4.5	66	64	2.52	50	164.04
H02558-750	3/4"	19.0	22.0	0.87	1.5	22	4.5	66	95	3.74	50	164.04



Manguera para Alimentos

FOOD HOSES

MANGUERAS INDUSTRIALES

INDUSTRIAL HOSES

CONSTRUCCIÓN

Tubo Interno: PVC transparente, **Refuerzo:** Malla textil (terylene), **Cubierta:** PVC transparente, **Aplicación:** Distribución de alimentos y bebidas, agua potable, aire, líneas de respiración, envases y equipos, líneas de lubricación y otras aplicaciones de flujo que requieran inspección visual, **Rango de Temperatura:** -5°C + 65 °C

CONSTRUCTION

Inner Tube: Transparent PVC, **Reinforcement:** One braid of terylene, **Cover:** Transparent PVC **Application:** Food and beverage dispensing, potable water, air, breathing lines, packaging and equipment, lube lines and other visual flow applications **Temperature Range:** -5°C + 65 °C



PVC GRADO ALIMENTICIO
FDA PVC H02581

Código Code	Diámetro Interno Hose I.D		Diámetro Externo Hose O.D		Presión Max. de Trab. Working Pressure		Presión Min. de Ruptura Burst Pressure		Radio de Curvatura Bending Radius		Rollo Roll	
	in	mm	mm	in	bar	psi	bar	psi	mm	in	mts	fts
H02581-251	1/4"	6.0	12	0.47	10	145	30.0	435	30	1.18	100	328.08
H02581-313	5/16"	8.0	13.0	0.51	10	145	30.0	435	40	1.57	100	328.08
H02581-381	3/8"	10.0	16.0	0.63	9	131	27.0	393	50	1.97	100	328.08
H02581-501	1/2"	13.0	19.0	0.75	8	116	24.0	348	65	2.56	50	164.04
H02581-631	5/8"	16.0	22.0	0.87	8	116	24.0	348	80	3.15	50	164.04
H02581-751	3/4"	19.0	26.0	1.02	8	116	24.0	348	95	3.74	50	164.04
H02581-1001	1"	25.0	33.0	1.30	6	87	18.0	261	125	4.92	50	164.04
H02581-1251	1.1/4"	32.0	41.0	1.61	5	73	15.0	219	160	6.3	40	131.23
H02581-1501	1.1/2"	38.0	48.0	1.89	4	58	12.0	174	190	7.48	40	131.23
H02581-2001	2"	50.0	62.0	2.44	4	58	12.0	174	250	984	40	131.23

CONSTRUCCIÓN

Tubo Interno: Polímero termoplástico grado alimenticio, **Refuerzo:** Polímero termoplástico rígido color blanco, **Cubierta:** Polímero termoplástico grado alimenticio **Aplicación:** Succión y descarga de alimentos de consumo humano, entre tanques de la industria alimenticia o camiones cisternas de suministro y descarga en maquinarias en la industria farmacéutica, **Rango de Temperatura:** -5°C + 60 °C

CONSTRUCTION

Inner Tube: Food grade thermoplastic polymer, **Reinforcement:** White rigid thermoplastic polymer, **Cover:** Food grade thermoplastic polymer, **Application:** Suction and discharge of food for human consumption, between tanks of food industry or supply cisterns and discharge in pharmaceutical industry, **Temperature Range:** -5°C + 60 °C



PVC PARA BEBIDAS
PVC Beverages H02582

Código Code	Diámetro Interno Hose I.D		Diámetro Externo Hose O.D		Presión Max. Trab. Working Pressure		Presión Min. Ruptura Burst Pressure		Radio de Curvatura Bending Radius		Rollo Roll	
	in	mm	mm	in	bar	psi	bar	psi	mm	in	mts	fts
H02582-1000	1"	25.4	31.0	1.22	10.34	150	31.0	450	200	7.9	50	164.04
H02582-1250	1.1/4"	31.8	37.9	1.49	8.96	130	26.8	390	235	9.3	50	164.04
H02582-1500	1.1/2"	38.1	44.8	1.76	6.89	100	20.7	300	250	9.8	50	164.04
H02582-2000	2"	50.8	57.5	2.26	6.89	100	20.7	300	300	11.8	50	164.04
H02582-3000	3"	76.2	85.4	3.36	5.52	80	16.6	240	470	18.5	30	98.43



MANGUERAS INDUSTRIALES INDUSTRIAL HOSES

Manguera para Alimentos FOOD HOSES



CONSTRUCCIÓN

Tubo interno: EPDM blanco Grado alimenticio. **Refuerzo:** Múltiples mallas textiles con 2 alambre de acero helicoidal. **Cubierta:** Mezcla de goma sintética resistente a la intemperie, color azul. **Aplicación:** Manguera para alimentos aprobada por la FDA diseñada para la succión y el suministro de alimentos acuosos como vino, jugo, refrescos y otros alimentos. No recomendado para alimentos grasos.

Rango de temperatura: -40°C +110°C

Norma: F.D.A title 26 177.2600

CONSTRUCTION

Inner Tube: White EPDM food quality

Reinforcement: High strength synthetic cord rubber with 2 helix wire

Cover: Blue wrapped finish synthetic rubber weathering resistant

Application: FDA approved food hose, designed for suction and delivery of aqueous foods such as wine, juice, soft drinks and other foodstuff. Not recommended for fatty foods

Temperature Range: -40°C +110°C

Standard: F.D.A title 26 177.2600



SUCCIÓN Y DESCARGA DE ALIMENTOS Y BEBIDAS FDA
FDA FOOD AND BEVERAGES SUCTION AND DISCHARGE HOSE

H02223

Código Code	Diámetro Interno Hose I.D.		Diámetro Externo Hose O.D.		Presión Max. de Trab. Working Pressure		Presión Min. de Ruptura Burst Pressure		Radio de Curvatura Bending Radius		Rollo Roll	
	in	mm	mm	in	bar	psi	bar	psi	mm	in	mts	fts
H02223-1500	1-1/2"	38.1	52	2-1/16"	17	250	66.7	1000	170	6.6	60	196.8
H02223-2000	2"	50.8	66	2-5/8"	17	250	66.7	1000	230	9.0	60	196.8
H02223-3000	3"	76.2	98	3-7/8"	17	250	66.7	1000	345	13.5	60	196.8



MANGUERAS HOSES

H02276 / Succión y Descarga de Químicos
XLPE Chemicals S & D Hose A.17

H02533 / PVC para Fumigación
PVC Spray Air and Fumigation Hose A.17

ÁCIDOS Y QUÍMICOS
Acid & Chemicals



MANGUERAS INDUSTRIALES INDUSTRIAL HOSES

Manguera para Ácidos y Químicos ACID & CHEMICAL HOSE

CONSTRUCCIÓN

Tubo Interno: Polietileno entrelazado (XLPE), **Refuerzo:** Múltiples mallas textiles con alambre de acero helicoidal, **Cubierta:** EPDM, color verde, **Aplicación:** Succión y descarga de químicos, **Rango de Temperatura:** -10°C + 65 °C

CONSTRUCTION

Inner Tube: Transparent XLPE (Cross Linked Polyethylene), **Reinforcement:** High tensile textile cords with embedded steel helix wire, **Cover:** Green EPDM, **Application:** Acid and chemical suction and delivery, **Temperature Range:** -10°C + 65 °C



SUCCIÓN Y DESCARGA DE QUÍMICOS
XLPE Chemical Suction Hose H02276

Código Code	Diámetro Interno Hose I.D.		Diámetro Externo Hose O.D.		Presión Max. de Trab. Working Pressure		Presión Min. de Ruptura Burst Pressure		Radio de Curvatura Bending Radius		Rollo Roll	
	in	mm	mm	in	bar	psi	bar	psi	mm	in	mts	fts
H02276-750	3/4"	19.0	31.0	1.22	16	240	48	720	90	3.54	40	131.23
H02276-1000	1"	25.0	37.0	1.46	16	240	48	720	110	4.33	40	131.23
H02276-1250	1.1/4"	32.0	44.0	1.73	16	240	48	720	135	5.31	40	131.23
H02276-1500	1.1/2"	38.0	51.0	2.01	16	240	48	720	155	6.1	40	131.23
H02276-2000	2"	50.0	67.0	2.64	16	240	48	720	235	9.25	40	131.23
H02276-2500	2.1/2"	63.5	80.0	3.15	16	240	48	720	285	11.22	40	131.23
H02276-3000	3"	76.0	92.0	3.62	16	240	48	720	335	13.19	40	131.23
H02276-4000	4"	101.6	122.0	4.80	16	240	48	720	445	17.52	40	131.23

CONSTRUCCIÓN

Tubo Interno: PVC, **Refuerzo:** Terylene, **Cubierta:** PVC, **Aplicación:** Para aplicaciones industriales de alta presión. Equipos de fumigación agrícola. Aire comprimido en las estaciones de servicio, **Rango de Temperatura:** -5°C + 65 °C

CONSTRUCTION

Inner Tube: PVC, **Reinforcement:** Terylene thread, **Cover:** PVC, **Application:** For high pressure industrial applications. Agricultural fumigation equipment. Compressed air at service stations, **Temperature Range:** -5°C + 65 °C



MANGUERA PARA FUMIGACIÓN
PVC Spray air and fumigation hose H02533

Código Code	Diámetro Interno Hose I.D.		Diámetro Externo Hose O.D.		Presión Max. Trab. Working Pressure		Presión Min. Ruptura Burst Pressure		Radio de Curvatura Bending Radius		Rollo Roll	
	in	mm	mm	in	bar	psi	bar	psi	mm	in	mts	fts
H02533-250	1/4"	6.5	12.00	0.47	50.00	725	150.00	2175	33	1.3	100	328.08
H02533-313	5/16"	8.0	14.00	0.55	50.00	725	150.00	2175	40	1.57	100	328.08
H02533-380	3/8"	10.0	16.00	0.63	50.00	725	150.00	2175	50	1.97	100	328.08
H02533-500	1/2"	13.0	20.00	0.79	50.00	725	150.00	2175	65	2.56	100	328.08
H02533-630	5/8"	16.0	25.00	0.98	50.00	725	150.00	2175	80	3.15	50	164.04
H02533-750	3/4"	19.0	28.50	1.12	50.00	725	150.00	2175	95	3.74	50	164.04



Manguera para Ácidos y Químicos

ACID & CHEMICAL HOSE

MANGUERAS INDUSTRIALES

INDUSTRIAL HOSES

CONSTRUCCIÓN

Tubo Interno: Mezcla de EPDM (Revestimiento de UHMWPE), **Refuerzo:** Capas de cordón sintético con dos hilos helicoidales. **Cubierta:** EPDM, color azul, **Aplicación:** Manipulación de una amplia gama de productos químicos, derivados del petróleo y aceites. **Rango de Temperatura:** -30°C + 65 °C.

CONSTRUCTION

Inner Tube: EPDM Blended (UHMWPE Lining) **Reinforcement:** Plies of synthetic cord with two helix wires. **Cover:** Blue Mandrel - wrapped finish type EPDM Blended **Application:** Excellent in handling a wide range of chemicals , petroleum products and oils. **Temperature Range:** -30°C + 65 °C.



SUCCIÓN Y DESCARGA DE QUÍMICOS H02277
Suction - Discharge for Chemical & Solvents Products

Código Code	Diámetro Interno Hose I.D		Diámetro Externo Hose O.D		Presión Max. de Trab. Working Pressure		Presión Min. de Ruptura Burst Pressure		Radio de Curvatura Bending Radius		Rollo Roll	
	in	mm	mm	in	bar	psi	bar	psi	mm	in	mts	fts
H02277-2000	2"	50.8	66.0	2-5/8"	13.3	200	53.3	800	230	9.96"	60	196.80
H02277-3000	3"	76.2	93.0	3-5/8"	13.3	200	53.3	800	345	13.58"	60	196.80
H02277-4000	4"	101.6	122.0	4-13/16"	13.3	200	53.3	800	455	17.91"	60	196.80



MANGUERAS HOSES

H02218 / Descarga de Cemento
Cement Discharge Hose A.18

H02235 / Concreto Premezclado y Yeso
Concrete Pump and Plaster Hose A.18

H02244 / Sand Blasting
Sand Blasting Hose A.19

H02564 / PVC para Trabajo Pesado
Heavy Duty PVC A.19

H02590 / PVC Aire - Vacío
Air Vacuum PVC A.20

H02591 / PVC Aire - Vacío TPU
TPU Air Vacuum PVC A.20

MANEJO DE MATERIALES
Material Handling



MANGUERAS INDUSTRIALES INDUSTRIAL HOSES

Manguera para Manejo de Materiales MATERIAL HANDLING HOSE

CONSTRUCCIÓN

Tubo Interno: Mezcla de goma sintética NR/BR, **Refuerzo:** Múltiples mallas textiles
Cubierta: Mezcla de goma sintética EPDM/SBR, **Aplicación:** Descarga neumática de polvos, cemento u otros materiales secos. También se utiliza para aplicaciones de mezcla de arena y agua en sitios de fracking, **Rango de Temperatura:** -34°C + 66 °C

CONSTRUCTION

Inner Tube: Synthetic NR/BR blended rubber, **Reinforcement:** High tensile textile cords
Cover: Synthetic EPDM/SBR blended rubber, **Application:** For pneumatic discharge of dry powders, dry cement, or other dry materials. Also used for sand/water mix applications on fracking sites, **Temperature Range:** -34°C + 66 °C



MANGUERA PARA DESCARGA DE CEMENTO
Cement Discharge Hose H02218

Código Code	Diámetro Interno Hose I.D.		Diámetro Externo Hose O.D.		Presión Max. Trab. Working Pressure		Presión Min. Ruptura Burst Pressure		Radio de Curvatura Bending Radius		Rollo Roll	
	in	mm	mm	in	bar	psi	bar	psi	mm	in	mts	fts
H02218-4000	4"	101.6	4.5	113.80	4.14	60	12.4	180	540	21.26	40	131.23

CONSTRUCCIÓN

Tubo Interno: Mezcla de NBR. **Refuerzo:** Capas de cordón sintético con dos alambre helicoidales
Cubierta: Mezcla de goma sintética. **Aplicación:** Diseñada para el trasvase de alquitrán, asfalto, aceites calientes y otros productos derivados del petróleo a alta temperatura, **Rango de Temperatura:** -30°C + 180 °C.

CONSTRUCTION

Inner Tube: NBR Blended. **Reinforcement:** Plies of synthetic cord with two helix wire
Cover: NBR Blended. **Application:** Designed for the transfer of tar, asphalt, hot oils and other high temperature petroleum based products. **Temperature Range:** -30°C + 180 °C



MAN. PARA ALQUITRÁN Y ASFALTO CALIENTES
Hot Tar and Asphalt Hose H02220

Código Code	Diámetro Interno Hose I.D.		Diámetro Externo Hose O.D.		Presión Max. de Trab. Working Pressure		Presión Min. de Ruptura Burst Pressure		Radio de Curvatura Bending Radius		Rollo Roll	
	in	mm	mm	in	bar	psi	bar	psi	mm	in	mts	fts
H02220-2000	2"	50.8	69	2-3/4"	10	150	40	600	230	9.96"	60	196.8
H02220-3000	3"	76.2	96.3	3-3/4"	10	150	40	600	345	13.58"	60	196.8
H02220-4000	4"	101.6	123	4-7/8"	10	150	40	600	455	17.91"	60	196.8



Manguera para Manejo de Materiales

MATERIAL HANDLING HOSE

MANGUERAS INDUSTRIALES

INDUSTRIAL HOSES

CONSTRUCCIÓN

Tubo Interno: Mezcla de goma sintética, **Refuerzo:** Cuatro mallas de acero
Cubierta: Mezcla de goma sintética, **Aplicación:** Para aplicaciones de colocación de hormigón o cemento a muy alta presión, **Rango de Temperatura:** -30°C + 80 °C

CONSTRUCTION

Inner Tube: Synthetic blended rubber, **Reinforcement:** Four layers of high tensile steel wire
Cover: Synthetic blended rubber, **Application:** For very high pressure concrete placement applications, **Temperature Range:** -30°C + 80 °C



MANGUERA PARA BOMBAS DE CONCRETO
 PREMEZCLADO Y YESO
 Concrete Pump and Plaster Hose **H02235**

Código Code	Diámetro Interno Hose I.D.			Diámetro Externo Hose O.D.			Presión Max. de Trab. Working Pressure		Presión Min. de Ruptura Burst Pressure		Radio de Curvatura Bending Radius		Peso Weight		Rollo Roll	
	Dash	in	mm	mm	in	bar	psi	bar	psi	mm	in	in	in	mts	fts	
H02235-1250	20	1.1/4"	32	46	1.81	85	1233	200	2900	270	10.63	2.4	1.76	12	39.37	
H02235-1500	24	1.1/2"	38	54	2.13	85	1233	200	2900	290	11.42	2.6	1.91	12	39.37	
H02235-2000	32	2"	51	69	2.72	85	1233	200	2900	360	14.17	2.8	2.06	12	39.37	
H02235-2500	40	2.1/2"	64	87	3.43	85	1233	200	2900	420	16.54	4.3	3.16	12	39.37	
H02235-3000	48	3"	76	103	4.06	85	1233	200	2900	470	18.50	6.78	4.99	10	32.8	
H02235-4000	64	4"	102	132	5.20	85	1233	200	2900	720	28.35	8.78	6.46	12	39.37	
H02235-5000	80	5"	127	157	6.18	85	1233	200	2900	950	37.40	10.58	7.78	10	32.8	
H02235-6000	96	6"	152	185	7.28	85	1233	200	2900	1100	43.31	17	12.50	12	39.37	

CONSTRUCCIÓN

Tubo Interno: Mezcla de goma sintética NR/BR, **Refuerzo:** Múltiples mallas textiles
Cubierta: Mezcla de goma sintética EPDM/SBR, **Aplicación:** Para limpieza con chorro de arena en construcción, astilleros, acerías y refinerías, **Rango de Temperatura:** -20°C + 70°C

CONSTRUCTION

Inner Tube: Synthetic NR/BR blended rubber, **Reinforcement:** High tensile cords, **Cover:** Synthetic EPDM/SBR blended rubber, **Application:** For sandblasting cleaning operations in construction, shipyards, steel mills and refineries, **Temperature Range:** -20°C + 70 °C



MANGUERA SAND BLASTING
 Sand Blasting Hose **H02244**

Código Code	Diámetro Interno Hose I.D.		Diámetro Externo Hose O.D.		Presión Max. de Trab. Working Pressure		Presión Min. de Ruptura Burst Pressure		Radio de Curvatura Bending Radius		Rollo Roll	
	in	mm	mm	in	bar	psi	bar	psi	mm	in	mts	fts
H02244-500	1/2"	12.7	27.0	1.06	10	150	30	450	--	--	40	131.23
H02244-750	3/4"	19.0	38.0	1.5	10	150	30	450	130	5.12	40	131.23
H02244-1000	1"	25.0	40.0	1.57	10	150	30	450	145	5.71	40	131.23
H02244-1250	1.1/4"	31.8	48.0	1.89	10	150	30	450	180	7.09	40	131.23
H02244-1500	1.1/2"	38.0	56.0	2.20	10	150	30	450	210	8.27	40	131.23
H02244-2000	2"	50.0	72.0	2.83	10	150	30	450	305	12.01	40	131.23
H02244-2500	2.1/2"	64.0	82.0	3.23	10	150	30	450	--	--	40	131.23
H02244-3000	3"	76.2	96.0	3.78	10	150	30	450	--	--	40	131.23



MANGUERAS INDUSTRIALES INDUSTRIAL HOSES

Manguera para Manejo de Materiales MATERIAL HANDLING HOSE

CONSTRUCCIÓN

Tubo Interno: Polímero termoplástico, **Refuerzo:** Polímero termoplástico rígido color blanco, **Cubierta:** Polímero termoplástico, **Aplicación:** Succión y descarga, trasiego y transporte de partículas sólidas en suspensión en la industria general, **Rango de Temperatura:** -5°C + 65 °C

CONSTRUCTION

Inner Tube: Thermoplastic polymer, **Reinforcement:** White rigid thermoplastic polymer
Cover: Thermoplastic polymer, **Application:** Suction and discharge, transfer and transport of solid particles suspended in general industry, **Temperature Range:** -5°C + 65 °C



PVC PARA TRABAJO PESADO
Heavy Duty PVC H02564

Código Code	Diámetro Interno Hose I.D		Diámetro Externo Hose O.D		Presión Max. de Trab. Working Pressure		Presión Min. de Rup. Burst Pressure		Radio de Curvatura Bending Radius		Succión Vacuum Rating		Rollo Roll	
	in	mm	mm	in	bar	psi	bar	psi	mm	in	bar	InHg	mts	fts
H02564B-1500	1.1/2"	38.0	46.00	1.81	10.00	145	30.00	435	190	7.48	0.81	24	30.48	100
H02564-1500	1.1/2"	38.0	46.00	1.81	10.00	145	30.00	435	190	7.48	0.81	24	30.48	100
H02564-2000	2"	51.0	60.00	2.36	9.00	131	27.00	393	255	10.04	0.81	24	30.48	100
H02564-2500	2.1/2"	64.0	73.00	2.87	8.00	116	24.00	348	320	12.60	0.81	24	30.48	100
H02564-3000	3"	76.0	86.00	3.39	7.00	102	21.00	306	380	14.96	0.85	25	30.48	100
H02564-4000	4"	102	113.00	4.45	7.00	102	21.00	306	510	20.08	0.85	25	30.48	100
H02564-6000	6"	152	166.00	6.54	5.03	73	15.10	219	760	29.92	0.85	25	15.00	49.21

CONSTRUCCIÓN

Tubo Interno: PVC flexible **Refuerzo:** Mallas de poliester reforzado **Cubierta:** PVC flexible transparente con PVC rígido helicoidal color naranja **Aplicación:** Succión de peces, líneas de riego, bombas, sustancias viscosas, lodo, transferencia de agua **Rango de temperatura:** -5°C + 65°C

CONSTRUCTION

Inner Tube: Flexible PVC inner tube **Reinforced:** layer Polyester yarn reinforced
Cover: Flexible transpaent PVC with Orange rigid PVC helix
Application: Fish suction, Irrigation lines, Pumps, rental and construction dewatering, Viscous Substance Transfer and so on **Fluid:** Water, slurry and so on **Temperature:** -5°C + 65°C



PVC PARA SUCCIÓN Y DESCARGA MULTIPROPOSITO
MULTIPURPOSE SUCTION AND DISCHARGE HOSE H02569

Código Code	Diámetro Interno Hose I.D		Diámetro Externo Hose O.D		Presión Max. de Trab. Working Pressure		Presión Min. de Rup. Burst Pressure		Radio de Curvatura Bending Radius		Succión Vacuum Rating		Rollo Roll	
	in	mm	mm	in	bar	psi	bar	psi	mm	in	bar	InHg	mts	fts
H02569-2000	2"	50.8	66.04	2.6"	6.7	100	20	300	4	101.6	0.982	29	30.48	100
H02569-2500	2 1/2"	63.5	76.45	3"	6.7	100	20	300	5	127	0.982	29	30.48	100
H02569-3000	3"	76.2	93.98	3.7"	6.7	100	20	300	6	152.4	0.982	29	30.48	100
H02569-4000	4"	101.6	121.41	4.8"	5	75	15	225	7	177.8	0.982	29	30.48	100
H02569-5000	5"	127	153.42	6"	4.7	70	14	210	9	228.6	0.982	29	18.3	60
H02569-6000	6"	152.4	182.12	7.2"	4.7	70	14	210	10	254	0.982	29	18.3/5.8	60/20
H02569-8000	8"	203.2	237.24	9.3"	4	60	12	180	16	406.4	0.948	28	5.8	19
H02569-10000	10"	254	295.4	11.6"	2.7	40	8	120	24.8	629.92	0.948	28	5.8	19



Manguera para Manejo de Materiales

MATERIAL HANDLING HOSE

MANGUERAS INDUSTRIALES

INDUSTRIAL HOSES

CONSTRUCCIÓN

Tubo Interno: Polímero termoplástico, **Refuerzo:** Espiral termoplástico con alta resistencia mecánica, **Cubierta:** Polímero Termoplástico, **Aplicación:** Para transporte de partículas en suspensión en plantas industriales que generan partículas volátiles, **Rango de Temperatura:** 5°C + 50 °C

CONSTRUCTION

Inner Tube: Thermoplastic polymer, **Reinforcement:** Thermoplastic spiral with high mechanical resistance, **Cover:** Thermoplastic polymer, **Application:** For transport of suspended particles in industrial plants that generate volatile particles, **Temperature Range:** 5°C + 50 °C



PVC AIRE-VACÍO
Air-Vacuum PVC H02590

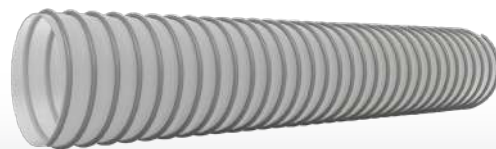
Código Code	Diámetro Interno Hose I.D		Diámetro Externo Hose O.D		Presión Max. de Trab. Working Pressure		Presión Min. de Rup. Burst Pressure		Radio de Curvatura Bending Radius		Succión Vacuum Rating		Rollo Roll	
	in	mm	mm	in	bar	psi	bar	psi	mm	in	bar	InHg	mts	fts
H02590-1500	1.1/2"	31.8	39.90	1.57	2.28	33	6.89	100	95	3.74	24.94	29	50	164.04
H02590-2000	2"	50.8	52.80	2.08	2.28	33	6.89	100	125	4.92	24.94	29	50	164.04
H02590-2500	2.1/2"	63.5	65.50	2.58	1.86	27	5.52	80	135	5.31	19.78	23	50	164.04
H02590-3000	3"	76.2	78.40	3.09	1.38	20	4.14	60	210	8.27	18.92	22	50	164.04
H02590-4000	4"	101.6	104.40	4.11	0.90	13	2.76	40	250	9.84	10.32	12	50	164.04
H02590-5000	5"	127.0	129.60	5.10	0.90	13	2.76	40	270	10.63	7.74	9	50	164.04

CONSTRUCCIÓN

Tubo Interno: Poliuretano termoplástico, **Refuerzo:** Espiral termoplástico con alta resistencia mecánica, **Cubierta:** Poliuretano termoplástico, **Aplicación:** Aspiración y transporte de partículas abrasivas en suspensión en plantas industriales. Alta flexibilidad, alta resistencia a la humedad. Resistencia a rayos UV. Muy flexible y liviana **Rango de Temperatura:** 5°C + 60 °C

CONSTRUCTION

Inner Tube: Thermoplastic polyurethane, **Reinforcement:** Thermoplastic spiral with high mechanical resistance, **Cover:** Thermoplastic polyurethane, **Application:** Suction and transport of abrasive particles in suspension in industrial plants. High flexibility, high resistance to moisture. UV resistance. Very flexible and lightweight, **Temperature Range:** 5°C + 60 °C



PVC AIRE-VACÍO TPU
TPU Air-Vacuum PVC H02591

Código Code	Diámetro Interno Hose I.D		Diámetro Externo Hose O.D		Presión Max. de Trab. Working Pressure		Presión Min. de Rup. Burst Pressure		Radio de Curvatura Bending Radius		Succión Vacuum Rating		Rollo Roll	
	in	mm	mm	in	bar	psi	bar	psi	mm	in	bar	InHg	mts	fts
H02591-1250	1.1/4"	31.8	32.80	1.29	4.14	60	12.41	180	50	1.97	0.34	10	50	164.04
H02591-1500	1.1/2"	38.1	39.10	1.54	4.14	60	12.41	180	50	1.97	0.30	9	50	164.04
H02591-2000	2"	50.8	51.80	2.04	3.65	53	11.03	160	60	2.36	0.30	9	50	164.04
H02591-2500	2.1/2"	63.5	64.50	2.54	2.28	33	6.89	100	70	2.76	0.30	9	50	164.04
H02591-3000	3"	76.2	77.20	3.04	1.38	20	4.14	60	80	3.15	0.27	8	50	164.04
H02591-4000	4"	101.6	102.80	4.05	0.90	13	2.76	40	90	3.54	0.27	8	50	164.04
H02591-5000	5"	127.0	128.60	5.06	0.90	13	2.76	40	120	4.72	0.24	7	50	164.04
H02591-6000	6"	152.4	154.80	6.09	0.90	13	2.76	40	130	5.12	0.24	7	30	98.43



PROTECTORES PROTECTION

H02598 / Espiraleta

Hose Guards A.21

H02444 / Mangas Alta Temperatura

Fire Sleeves A.21

**PROTECTORES PARA
MANGUERAS**
Hoses Protection



MANGUERAS INDUSTRIALES INDUSTRIAL HOSES

Protectores para Mangueras HOSE PROTECTION

CONSTRUCCIÓN

Cubierta: Polímero termoplástico, **Aplicación:** Protección y ordenamiento de cables o mangueras. Protección de mangueras expuestas a abrasión. Ordenamiento de cableado en vehículos, **Rango de Temperatura:** 5°C + 60 °C

CONSTRUCTION

Cover: Thermoplastic polymer, **Application:** Protection and ordering of cables or hoses. Protection of hoses exposed to abrasion. Ordering of wiring in vehicles
Temperature Range: 5°C + 60 °C



PROTECTORES TIPO ESPIRALETO
Hose Guards H02598

Código Code	Diámetro Interno Hose I.D		Rollo Roll	
	in	mm	mts	fts
H02598-190	3/16"	4.57	100	328.08
H02598-250	1/4"	6.35	100	328.08
H02598-380	3/8"	9.4	100	328.08
H02598-500	1/2"	12.7	100	328.08
H02598-750	3/4"	19.1	100	328.08
H02598-1000	1"	25.4	100	328.08
H02598-1500	1.1/2"	38.1	100	328.08
H02598-2000	2"	50.8	100	328.08
H02598-2500	2.1/2"	63.5	100	328.08
H02598-3000	3"	76.2	100	328.08
H02598-4000	4"	101.6	100	328.08

CONSTRUCCIÓN

Tubo Interno: Fibra de vidrio, **Cubierta:** Goma de silicón color naranja,
Aplicación: Protección de mangueras hidráulicas e industriales en aplicaciones de altas temperaturas, **Temperatura Constante de trabajo:** -75°C + 260 °C
Pico de tiempo máximo de temperatura en corto período de tiempo: + 1650 °C

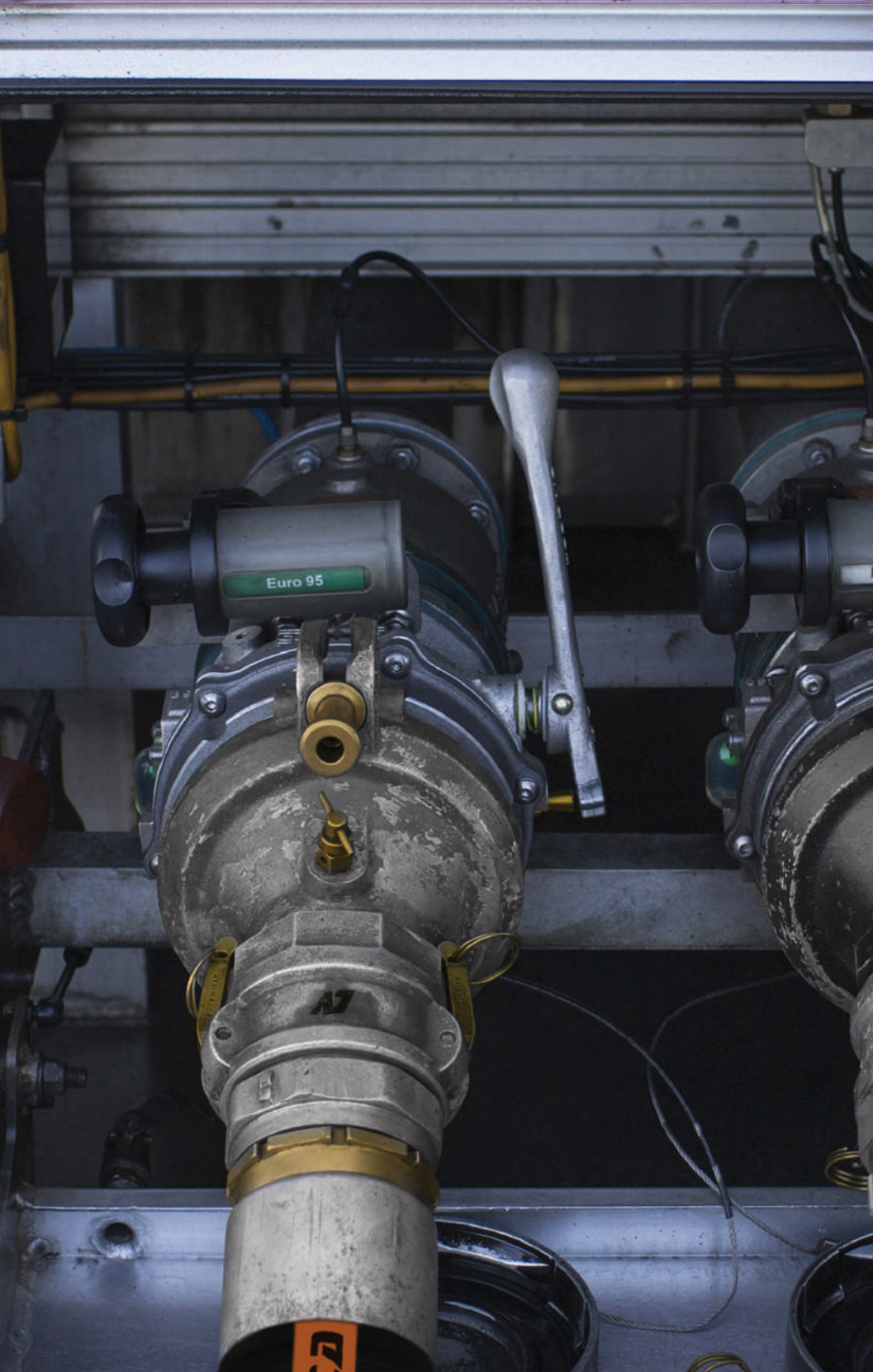
CONSTRUCTION

Inner Tube: Fiberglass braid, **Cover:** Orange silicone rubber, **Application:** Hydraulic and industrial hoses protection in high temperature applications,
Working Temperature: -75°C + 260 °C , **Short Time Peak Temperature:** + 1650°C



MANGAS RESISTENTES A ALTAS TEMPERATURAS
Fire Sleeves TD H02444

Código Code	Diámetro Interno Hose I.D		Rollo Roll	
	in	mm	mts	fts
H02444-500	3/16"	4.57	100	328.08
H02444-750	1/4"	6.35	100	328.08
H02444-1000	3/8"	9.4	100	328.08



ACOPLES COUPLINGS

Parte A / Adaptador Macho x Rosca Hembra <i>Male Adapter x Female Thread</i>	B.1
Parte B / Acople Hembra x Rosca Macho <i>Female Coupling x Male Thread</i>	B.2
Parte C / Acople Hembra x Espiga <i>Female Coupling x Hose Barb</i>	B.3
Parte D / Acople Hembra x Rosca Hembra <i>Female Coupling x Female Thread</i>	B.4
Parte E / Adaptador Macho x Espiga <i>Male Adapter x Hose Barb</i>	B.5
Parte F / Adaptador Macho x Rosca Macho <i>Male Adapter x Male Thread</i>	B.6
Parte DC / Tapa <i>Dust Cap</i>	B.7
Parte DP / Tapón <i>Dust Plug</i>	B.8
Empacadura <i>Gasket</i>	B.8
Parte HB / Bronce <i>HB Part - Brass</i>	B.9
Parte HBS / Acero Inoxidable <i>HBC Part - Stainless Steel</i>	B.9
PL- Set / Conexiones Succión y Descarga <i>Suction & Discharge Coupling</i>	B.9
PTCN / Niple Combinado <i>Steel Combination Nipple</i>	B.10
PTHM / Unión para Mangueras <i>Steel Hose Union</i>	B.10
CR / Reducción Hembra x Espiga <i>Reduction Female Coupler - Hose Barb</i>	B.10
GJF / Hembra Tipo Boss <i>Female Boss Type</i>	B.11
GJMST / Macho Tipo Boss <i>Male Boss Type</i>	B.11
UHC / Abrazadera <i>Hose Clamp</i>	B.11
UCHS / Espiga para Compresores <i>Compressors Barb</i>	B.12
UCFE / Conex. Hembra para Compresores <i>Compressors Female Coupling</i>	B.12
UCME / Conex. Macho para Compresores <i>Compressors Male Coupling</i>	B.12
RG / Anillo de Goma <i>Rubber Ring</i>	B.13
TWC / Conexión para Compresores 3 Vías <i>Compressors Coupling 3 ways</i>	B.13
CSB / Conexión para SandBlasting <i>SandBlast Hose Coupling</i>	B.13
NSB / Terminal para Manguera SanBlasting <i>SandBlast Terminal Hose Coupling</i>	B.14
FERRUL / Para Mangueras Industriales <i>For Industrial Hoses</i>	B.14

ACOPLES INDUSTRIALES

Industrial Couplings

INDICE VISUAL

Visual Index

Acoples Industriales

INDUSTRIAL COUPLINGS

B.1



PARTE A

ACOPLE RÁPIDO ADAPTADOR MACHO X ROSCA HEMBRA
CAMLOCK COUPLING MALE ADAPTER X FEMALE

B.2



PARTE B

ACOPLE RÁPIDO HEMBRA X ROSCA MACHO
CAMLOCK COUPLING FEMALE X MALE THREAD

B.3



PARTE C

ACOPLE RÁPIDO HEMBRA X ESPIGA PARA MANGUERA
CAMLOCK COUPLING FEMALE X HOSE BARB

B.4



PARTE D

ACOPLE RÁPIDO HEMBRA X ROSCA HEMBRA
CAMLOCK COUPLING FEMALE X FEMALE THREAD

B.5



PARTE E

ACOPLE RÁPIDO ADAPTADOR MACHO X ESPIGA PARA MANGUERA
CAMLOCK COUPLING MALE ADAPTER X HOSE BARB

B.6



PARTE F

ACOPLE RÁPIDO ADAPTADOR MACHO X ROSCA MACHO
CAMLOCK COUPLING MALE ADAPTER X MALE THREAD

B.7



PARTE DC

ACOPLE RÁPIDO PARTE DC "TAPA"
CAMLOCK COUPLING PART DC "DUST CAP"

B.8



PARTE DP

ACOPLE RÁPIDO PARTE DP "TAPÓN"
CAMLOCK COUPLING PART DP "DUST PLUG"

B.8



EMPACADURA
CAMLOCK GASKETS

B.9



PARTE HB

PARTE HB- BRONCE
HB PART - BRASS

B.9



PARTE HBS

PARTE HBS - ACERO INOXIDABLE
HBS PART - STAINLESS STEEL

B.9



PL-SET

CONEXIONES PARA MANGUERAS DE SUCCIÓN Y DESCARGA
SUCTION AND DISCHARGE HOSE COUPLING

INDICE VISUAL

Visual Index

Acoples Industriales

INDUSTRIAL COUPLINGS

B. 10



PTCN

NIPLES COMBINADOS DE ACERO
STEEL COMBINATION NIPPLES

B. 10



PTHM

UNIÓN PARA MANGUERAS
STEEL HOSE UNION

B. 10



CR

REDUCCIÓN ACOPLE HEMBRA-ESPIGA PARA MANGUERA
REDUCTION FEMALE COUPLER - HOSE BARB

B. 11



GJF

CONEXIÓN PARA MANGUERA HEMBRA TIPO BOSS
FEMALE HOSE FITTING BOSS TYPE

B. 11



GJMST

CONEXIÓN PARA MANGUERA MACHO TIPO BOSS
MALE HOSE FITTING BOSS TYPE

B. 11



UHC

ABRAZADERA PARA MANGUERA
HOSE CLAMPS

B. 12



UCHS

CONEXIÓN RÁPIDA PARA COMPRESORES (ESPIGA)
COMPRESSORS CAMLOCK COUPLING (BARB)

B. 12



UCFE

CONEXIÓN RÁPIDA PARA COMPRESORES (HEMBRA)
COMPRESSORS CAMLOCK COUPLING (FEMALE)

B. 12



UCME

CONEXIÓN RÁPIDA PARA COMPRESORES (MACHO)
COMPRESSORS CAMLOCK COUPLING (MALE)

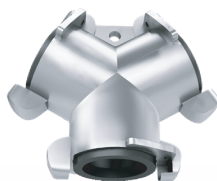
B. 13



CSB

CONEXIÓN PARA MANGUERA CHORRO DE ARENA
SANDBLAST QUICK COUPLING

B. 13



TWC

CONEXIÓN RÁPIDA PARA COMPRESORES (TRES VÍAS)
COMPRESSORS CAMLOCK COUPLING (THREE WAYS)



ESW-16

ACOPLES GIRATORIO PARA
TUBERÍA DE AIRE (TIPO EUROPEO)
EUROPEAN AIR PIPE SWIVEL COUPLING

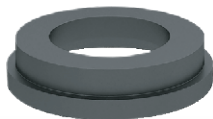
INDICE VISUAL

Visual Index

Acoples Industriales

INDUSTRIAL COUPLINGS

B.14



RG

ANILLO DE GOMA
RUBBER RING

B.14



NSB

CONEXIÓN
PARA MANGUERA CHORRO DE ARENA (TERMINAL)
SANDBLAST HOSE COUPLING

B. 14



FERRUL

PARA MANGUERAS INDUSTRIALES
FOR INDUSTRIAL HOSES

B. 14



ARGOLLA

PARA MANGUERAS INDUSTRIALES
SLEEVES

B. 15



CRE

COLADOR ROSCADO ESTANDAR CON
AGUJERO REDONDO HEMBRA NPT
STANDARD STRAINER FEMALE NPT



CONEXIONES TIPO CAM-LOCK

CAM-LOCK COUPLINGS

MANGUERAS INDUSTRIALES

INDUSTRIAL HOSES

PARTE A

ACOPLE RÁPIDO ADAPTADOR MACHO X ROSCA HEMBRA

Camlock Coupling Male Adapter x Female



Código Code	Medida Size	Material Material
	in	
050-ASS	1/2"	Acero Inoxidable /Stainless Steel
075-A	3/4"	Aluminio /Aluminium
075-ASS	1"	Acero Inoxidable /Stainless Steel
10-A	1"	Aluminio /Aluminium
10-AB	1"	Bronce / Brass
10-AP	1"	Polipropileno/ Polypropylene
10-ASS	1"	Acero Inoxidable /Stainless Steel
12-A	1.1/4"	Aluminio /Aluminium
12-AB	1.1/4"	Bronce / Brass
12-AP	1.1/4"	Polipropileno/ Polypropylene
12-ASS	0	Acero Inoxidable /Stainless Steel
15-A	1.1/2"	Aluminio /Aluminium
15-AB	1.1/2"	Bronce / Brass
15-AP	1.1/2"	Polipropileno/ Polypropylene
15-ASS	1.1/2"	Acero Inoxidable /Stainless Steel
20-A	2"	Aluminio /Aluminium
20-AB	2"	Bronce / Brass
20-AP	2"	Polipropileno/ Polypropylene
20-ASS	2"	Acero Inoxidable /Stainless Steel
25-A	2.1/2"	Aluminio /Aluminium
25-AB	2.1/2"	Bronce / Brass
25-AP	2.1/2"	Polipropileno/ Polypropylene
25-ASS	2.1/2"	Acero Inoxidable /Stainless Steel
30-A	3"	Aluminio /Aluminium
30-AB	3"	Bronce / Brass
30-AP	3"	Polipropileno/ Polypropylene
30-ASS	3"	Acero Inoxidable /Stainless Steel
40-A	4"	Aluminio /Aluminium
40-AB	4"	Bronce / Brass
40-AP	4"	Polipropileno/ Polypropylene
40-ASS	4"	Acero Inoxidable /Stainless Steel
60-A	6"	Aluminio /Aluminium
60-AB	6"	Bronce / Brass
60-AP	6"	Polipropileno/ Polypropylene
60-ASS	6"	Acero Inoxidable /Stainless Steel



MANGUERAS INDUSTRIALES INDUSTRIAL HOSES

CONEXIONES TIPO CAM-LOCK CAM-LOCK COUPLINGS

PARTE B

ACOPLE RÁPIDO HEMBRA X ROSCA MACHO Camlock coupling Female x Male Thread

Código Code	Medida Size	Material Material
	in	
050-BSS	1/2"	Acero Inoxidable /Stainless Steel
075-B	3/4"	Aluminio /Aluminium
10-B	1"	Aluminio /Aluminium
10-BB	1"	Bronce / Brass
10-BP	1"	Polipropileno/ Polypropylene
10-BSS	1"	Acero Inoxidable /Stainless Steel
12-B	1.1/4"	Aluminio /Aluminium
12-BB	1.1/4"	Bronce / Brass
12-BP	1.1/4"	Polipropileno/ Polypropylene
12-BSS	1.1/4"	Acero Inoxidable /Stainless Steel
15-B	1-1/2"	Aluminio /Aluminium
15-BB	1-1/2"	Bronce / Brass
15-BP	1-1/2"	Polipropileno/ Polypropylene
15-BSS	1-1/2"	Acero Inoxidable /Stainless Steel
20-B	2"	Aluminio /Aluminium
20-BB	2"	Bronce / Brass
20-BP	2"	Polipropileno/ Polypropylene
20-BSS	2"	Acero Inoxidable /Stainless Steel
25-B	2.1/2"	Aluminio /Aluminium
25-BB	2.1/2"	Bronce / Brass
25-BP	2.1/2"	Polipropileno/ Polypropylene
25-BSS	2.1/2"	Acero Inoxidable /Stainless Steel
30-B	3"	Aluminio /Aluminium
30-BB	3"	Bronce / Brass
30-BP	3"	Polipropileno/ Polypropylene
30-BSS	3"	Acero Inoxidable /Stainless Steel
40-B	4"	Aluminio /Aluminium
40-BB	4"	Bronce / Brass
40-BP	4"	Polipropileno/ Polypropylene
40-BSS	4"	Acero Inoxidable /Stainless Steel
60-B	6"	Aluminio /Aluminium
60-BB	6"	Bronce / Brass
60-BP	6"	Polipropileno/ Polypropylene
60-BSS	6"	Acero Inoxidable /Stainless Steel





CONEXIONES TIPO CAM-LOCK CAM-LOCK COUPLINGS

MANGUERAS INDUSTRIALES INDUSTRIAL HOSES

PARTE C

ACOPLE RÁPIDO HEMBRA X ESPIGA PARA MANGUERA Camlock coupling Female x Hose Barb

Código Code	Medida Size	Material Material
in		
050-CSS	1/2"	Acero Inoxidable /Stainless Steel
075-C	3/4"	Aluminio /Aluminium
075-CSS	3/4"	Acero Inoxidable /Stainless Steel
10-C	1"	Aluminio /Aluminium
10-CB	1"	Bronce / Brass
10-CP	1"	Polipropileno/ Polypropylene
10-CSS	1"	Acero Inoxidable /Stainless Steel
12-C	1.1/4"	Aluminio /Aluminium
12-CB	1.1/4"	Bronce / Brass
12-CP	1.1/4"	Polipropileno/ Polypropylene
12-CSS	1.1/4"	Acero Inoxidable /Stainless Steel
15-C	1-1/2"	Aluminio /Aluminium
15-CB	1-1/2"	Bronce / Brass
15-CP	1-1/2"	Polipropileno/ Polypropylene
15-CSS	1-1/2"	Acero Inoxidable /Stainless Steel
20-C	2"	Aluminio /Aluminium
20-CB	2"	Bronce / Brass
20-CP	2"	Polipropileno/ Polypropylene
20-CSS	2"	Acero Inoxidable /Stainless Steel
25-C	2.1/2"	Aluminio /Aluminium
25-CB	2.1/2"	Bronce / Brass
25-CP	2.1/2"	Polipropileno/ Polypropylene
25-CSS	2.1/2"	Acero Inoxidable /Stainless Steel
30-C	3"	Aluminio /Aluminium
30-CB	3"	Bronce / Brass
30-CP	3"	Polipropileno/ Polypropylene
30-CSS	3"	Acero Inoxidable /Stainless Steel
40-C	4"	Aluminio /Aluminium
40-CB	4"	Bronce / Brass
40-CP	4"	Polipropileno/ Polypropylene
40-CSS	4"	Acero Inoxidable /Stainless Steel
60-C	6"	Aluminio /Aluminium
60-CB	6"	Bronce / Brass
60-CP	6"	Polipropileno/ Polypropylene
60-CSS	6"	Acero Inoxidable /Stainless Steel





MANGUERAS INDUSTRIALES INDUSTRIAL HOSES

CONEXIONES TIPO CAM-LOCK CAM-LOCK COUPLINGS

PARTE D

ACOPLE RÁPIDO HEMBRA X ROSCA HEMBRA Camlock coupling Female x Female Thread

Código Code	Medida Size	Material Material
	in	
050-DSS	1/2"	Acero Inoxidable /Stainless Steel
075-D	3/4"	Aluminio /Aluminium
075-DSS	3/4"	Acero Inoxidable /Stainless Steel
10-D	1"	Aluminio /Aluminium
10-DB	1"	Bronce / Brass
10-DP	1"	Polipropileno/ Polypropylene
10-DSS	1"	Acero Inoxidable /Stainless Steel
12-D	1.1/4"	Aluminio /Aluminium
12-DB	1.1/4"	Bronce / Brass
12-DP	1.1/4"	Polipropileno/ Polypropylene
12-DSS	1.1/4"	Acero Inoxidable /Stainless Steel
15-D	1-1/2"	Aluminio /Aluminium
15-DB	1-1/2"	Bronce / Brass
15-DP	1-1/2"	Polipropileno/ Polypropylene
15-DSS	1-1/2"	Acero Inoxidable /Stainless Steel
20-D	2"	Aluminio /Aluminium
20-DB	2"	Bronce / Brass
20-DP	2"	Polipropileno/ Polypropylene
20-DSS	2"	Acero Inoxidable /Stainless Steel
25-D	2.1/2"	Aluminio /Aluminium
25-DB	2.1/2"	Bronce / Brass
25-DP	2.1/2"	Polipropileno/ Polypropylene
25-DSS	2.1/2"	Acero Inoxidable /Stainless Steel
30-D	3"	Aluminio /Aluminium
30-DB	3"	Bronce / Brass
30-DP	3"	Polipropileno/ Polypropylene
30-DSS	3"	Acero Inoxidable /Stainless Steel
40-D	4"	Aluminio /Aluminium
40-DB	4"	Bronce / Brass
40-DP	4"	Polipropileno/ Polypropylene
40-DSS	4"	Acero Inoxidable /Stainless Steel
60-D	6"	Aluminio /Aluminium
60-DB	6"	Bronce / Brass
60-DP	6"	Polipropileno/ Polypropylene
60-DSS	6"	Acero Inoxidable /Stainless Steel





CONEXIONES TIPO CAM-LOCK CAM-LOCK COUPLINGS

MANGUERAS INDUSTRIALES INDUSTRIAL HOSES

PARTE E

ACOPLE RÁPIDO ADAPTADOR MACHO X ESPIGA PARA MANGUERA Camlock coupling Male Adapter x Hose Barb

Código Code	Medida Size	Material Material
	in	
050-ESS	1/2"	Acero Inoxidable /Stainless Steel
075-E	3/4"	Aluminio /Aluminium
075-ESS	3/4"	Acero Inoxidable /Stainless Steel
10-E	1"	Aluminio /Aluminium
10-EB	1"	Bronce / Brass
10-EP	1"	Polipropileno/ Polypropylene
10-ESS	1"	Acero Inoxidable /Stainless Steel
12-E	1.1/4"	Aluminio /Aluminium
12-EB	1.1/4"	Bronce / Brass
12-EP	1.1/4"	Polipropileno/ Polypropylene
12-ESS	1.1/4"	Acero Inoxidable /Stainless Steel
15-E	1-1/2"	Aluminio /Aluminium
15-EB	1-1/2"	Bronce / Brass
15-EP	1-1/2"	Polipropileno/ Polypropylene
15-ESS	1-1/2"	Acero Inoxidable /Stainless Steel
20-E	2"	Aluminio /Aluminium
20-EB	2"	Bronce / Brass
20-EP	2"	Polipropileno/ Polypropylene
20-ESS	2"	Acero Inoxidable /Stainless Steel
25-E	2.1/2"	Aluminio /Aluminium
25-EB	2.1/2"	Bronce / Brass
25-EP	2.1/2"	Polipropileno/ Polypropylene
25-ESS	2.1/2"	Acero Inoxidable /Stainless Steel
30-E	3"	Aluminio /Aluminium
30-EB	3"	Bronce / Brass
30-EP	3"	Polipropileno/ Polypropylene
30-ESS	3"	Acero Inoxidable /Stainless Steel
40-E	4"	Aluminio /Aluminium
40-EB	4"	Bronce / Brass
40-EP	4"	Polipropileno/ Polypropylene
40-ESS	4"	Acero Inoxidable /Stainless Steel
60-E	6"	Aluminio /Aluminium
60-EB	6"	Bronce / Brass
60-EP	6"	Polipropileno/ Polypropylene
60-ESS	6"	Acero Inoxidable /Stainless Steel





MANGUERAS INDUSTRIALES INDUSTRIAL HOSES

CONEXIONES TIPO CAM-LOCK CAM-LOCK COUPLINGS

PARTE F

ACOPLE RÁPIDO ADAPTADOR MACHO X ROSCA MACHO
Camlock coupling Male Adapter x Male Thread

Código Code	Medida Size	Material Material
	in	
075-F	3/4"	Aluminio / Aluminium
075-FSS	3/4"	Acero Inoxidable / Stainless Steel
10-F	1"	Aluminio / Aluminium
10-FB	1"	Bronce / Brass
10-FP	1"	Polipropileno / Polypropylene
10-FSS	1"	Acero Inoxidable / Stainless Steel
12-F	1.1/4"	Aluminio / Aluminium
12-FB	1.1/4"	Bronce / Brass
12-FP	1.1/4"	Polipropileno / Polypropylene
12-FSS	1.1/4"	Acero Inoxidable / Stainless Steel
15-F	1.1/2"	Aluminio / Aluminium
15-FB	1.1/2"	Bronce / Brass
15-FP	1.1/2"	Polipropileno / Polypropylene
15-FSS	1.1/2"	Acero Inoxidable / Stainless Steel
20-F	2"	Aluminio / Aluminium
20-FB	2"	Bronce / Brass
20-FP	2"	Polipropileno / Polypropylene
20-FSS	2"	Acero Inoxidable / Stainless Steel
25-F	2.1/2"	Aluminio / Aluminium
25-FB	2.1/2"	Bronce / Brass
25-FP	2.1/2"	Polipropileno / Polypropylene
25-FSS	2.1/2"	Acero Inoxidable / Stainless Steel
30-F	3"	Aluminio / Aluminium
30-FB	3"	Bronce / Brass
30-FP	3"	Polipropileno / Polypropylene
30-FSS	3"	Acero Inoxidable / Stainless Steel
40-F	4"	Aluminio / Aluminium
40-FB	4"	Bronce / Brass
40-FP	4"	Polipropileno / Polypropylene
40-FSS	4"	Acero Inoxidable / Stainless Steel
60-F	6"	Aluminio / Aluminium
60-FB	6"	Bronce / Brass
60-FP	6"	Polipropileno / Polypropylene
60-FSS	6"	Acero Inoxidable / Stainless Steel
80-F	8"	Aluminio / Aluminium





CONEXIONES TIPO CAM-LOCK CAM-LOCK COUPLINGS

MANGUERAS INDUSTRIALES INDUSTRIAL HOSES

PARTE DC

ACOPLE RÁPIDO PARTE DC "TAPA"
Camlock coupling Part DC "Dust Cap"

Código Code	Medida Size	Material Material
	in	
075-V-DC	3/4"	Aluminio / Aluminium
10-V-DC	1"	Aluminio / Aluminium
10-VB-DC	1"	Bronce / Brass
10-VSS-DC	1"	Acero Inoxidable / Stainless Steel
12-V-DC	1.1/4"	Aluminio / Aluminium
12-VB-DC	1.1/4"	Bronce / Brass
12-VSS-DC	1.1/4"	Acero Inoxidable / Stainless Steel
15-V-DC	1.1/2"	Aluminio / Aluminium
15-VB-DC	1.1/2"	Bronce / Brass
15-VSS-DC	1.1/2"	Acero Inoxidable / Stainless Steel
20-V-DC	2"	Aluminio / Aluminium
20-VB-DC	2"	Bronce / Brass
20-VP-DC	2"	Polipropileno / Polypropylene
20-VSS-DC	2"	Acero Inoxidable / Stainless Steel
25-V-DC	2.1/2"	Aluminio / Aluminium
25-VB-DC	2.1/2"	Bronce / Brass
25-VSS-DC	2.1/2"	Acero Inoxidable / Stainless Steel
30-V-DC	3"	Aluminio / Aluminium
30-VB-DC	3"	Bronce / Brass
30-VSS-DC	3"	Acero Inoxidable / Stainless Steel
40-V-DC	4"	Aluminio / Aluminium
40-VB-DC	4"	Bronce / Brass
40-VSS-DC	4"	Acero Inoxidable / Stainless Steel
50-V-DC	5"	Aluminio / Aluminium
50-VB-DC	5"	Bronce / Brass
50-VSS-DC	5"	Acero Inoxidable / Stainless Steel
60-V-DC	6"	Aluminio / Aluminium
60-VB-DC	6"	Bronce / Brass
60-VSS-DC	6"	Acero Inoxidable / Stainless Steel





MANGUERAS INDUSTRIALES INDUSTRIAL HOSES

CONEXIONES TIPO CAM-LOCK CAM-LOCK COUPLINGS

PARTE DP

ACOPLE RÁPIDO PARTE DP "TAPÓN"
Camlock coupling Part DP "Dust Plug"

Código Code	Medida Size	Material Material
	in	
075-WSS-DP	3/4"	Acero Inoxidable /Stainless Steel
10-W-DP	1"	Aluminio /Aluminium
10-WB-DP	1"	Bronce / Brass
10-WSS-DP	1"	Acero Inoxidable /Stainless Steel
12-W-DP	1.1/4"	Aluminio /Aluminium
12-WB-DP	1.1/4"	Bronce / Brass
12-WSS-DP	1.1/4"	Acero Inoxidable /Stainless Steel
15-W-DP	1.1/2"	Aluminio /Aluminium
15-WB-DP	1.1/2"	Bronce / Brass
15-WSS-DP	1.1/2"	Acero Inoxidable /Stainless Steel
20-W-DP	2"	Aluminio /Aluminium
20-WB-DP	2"	Bronce / Brass
20-WP-DP	2"	Polipropileno/ Polypropylene
20-WSS-DP	2"	Acero Inoxidable /Stainless Steel
25-W-DP	2.1/2"	Aluminio /Aluminium
25-WB-DP	2.1/2"	Bronce / Brass
25-WSS-DP	2.1/2"	Acero Inoxidable /Stainless Steel
30-W-DP	3"	Aluminio /Aluminium
30-WB-DP	3"	Bronce / Brass
30-WSS-DP	3"	Acero Inoxidable /Stainless Steel
40-W-DP	4"	Aluminio /Aluminium
40-WB-DP	4"	Bronce / Brass
40-WSS-DP	4"	Acero Inoxidable /Stainless Steel
50-W-DP	5"	Aluminio /Aluminium
50-WB-DP	5"	Bronce / Brass
50-WSS-DP	5"	Acero Inoxidable /Stainless Steel
60-W-DP	6"	Aluminio /Aluminium
60-WB-DP	6"	Bronce / Brass
60-WSS-DP	6"	Acero Inoxidable /Stainless Steel



EMPACADURA

Camlock Gaskets

Código Code	Medida Size	Material Material
	in	
B-15	1/2"	Buna
B-01	3/4"	Buna
B-02	1"	Buna
B-03	1.1/4"	Buna
B-04	1.1/2"	Buna
B-05	2"	Buna
B-06	2.1/2"	Buna
B-07	3"	Buna
B-08	4"	Buna
B-09	6"	Buna





CONEXIONES TIPO CAM-LOCK CAM-LOCK COUPLINGS

MANGUERAS INDUSTRIALES INDUSTRIAL HOSES

PARTE HB

PARTE HB - BRONCE
HB Part - Brass

Código Code	Medida Size	Material Material
in		
HB-10	1/2"-3/4"	Bronce / Brass
HB-11	1"	Bronce / Brass
HB-12	1.1/4"	Bronce / Brass
HB-15	1.1/2"	Bronce / Brass
HB-20	2"	Bronce / Brass
HB-30	3"	Bronce / Brass
HB-40	4"	Bronce / Brass
HB-60	6"	Bronce / Brass
HB-80	8"	Bronce / Brass
HB-100	10"	Bronce / Brass



PARTE HBS

PARTE HBS - ACERO INOXIDABLE
HBS Part - Stainless Steel

Código Code	Medida Size	Material Material
in		
HBS-10	1/2"-3/4"	Acero Inoxidable / Stainless Steel
HBS-11	1"	Acero Inoxidable / Stainless Steel
HBS-12	1.1/4"	Acero Inoxidable / Stainless Steel
HBS-15	1.1/2"	Acero Inoxidable / Stainless Steel
HBS-20	2"	Acero Inoxidable / Stainless Steel
HBS-30	3"	Acero Inoxidable / Stainless Steel
HBS-40	4"	Acero Inoxidable / Stainless Steel
HBS-60	6"	Acero Inoxidable / Stainless Steel
HBS-80	8"	Acero Inoxidable / Stainless Steel
HBS-100	10"	Acero Inoxidable / Stainless Steel



PL-SET

CONEXIONES PARA MANGUERAS DE SUCCIÓN Y DESCARGA
Suction and Discharge Hose Couplings

Código Code	Medida Size
in	
PL-15SET	1.1/2"
PL-20SET	2"
PL-30SET	3"





MANGUERAS INDUSTRIALES INDUSTRIAL HOSES

CONEXIONES TIPO CAM-LOCK CAM-LOCK COUPLINGS

PTCN

NIPLES COMBINADOS DE ACERO Steel Combination Nipples

Código Code	Medida Size
	in
PTCN-50	1/2"
PTCN-75	3/4"
PTCN-100	1"
PTCN-125	1.1/4"
PTCN-150	1.1/2"
PTCN-200	2"
PTCN-250	2.1/2"
PTCN-300	3"
PTCN-400	4"
PTCN-500	5"
PTCN-600	6"
PTCN-800	8"
PTCN-1000	10"



PTHM

UNIÓN PARA MANGUERAS Steel Hose Union

Código Code	Medida Size
	in
PTHM-50	1/2"
PTHM-75	3/4"
PTHM-100	1"
PTHM-125	1.1/4"
PTHM-150	1.1/2"
PTHM-200	2"
PTHM-250	2.1/2"
PTHM-300	3"
PTHM-400	4"
PTHM-500	5"
PTHM-600	6"
PTHM-800	8"



CR

REDUCCIÓN ACOPLE HEMBRA - ESPIGA PARA MANGUERA Reduction Female Coupler - Hose Barb

Código Code	Medida Size	Material Material
	in	
3020-CR	2"	Bronce / Brass
4020-CR	3/4"	Aluminio / Aluminium





CONEXIONES TIPO CAM-LOCK CAM-LOCK COUPLINGS

MANGUERAS INDUSTRIALES INDUSTRIAL HOSES

GJF

CONEXIÓN PARA MANGUERA HEMBRA TIPO BOSS
Female Hose Fitting Boss Type

Presión de Trabajo: 150psi
Working Pressure: 150psi

Código Code	Medida Size
	in
GJF-50	1/2"
GJF-75	3/4"
GJF-100	1"
GJF-125	1.1/4"
GJF-150	1.1/2"
GJF-200	2"
GJF-300	3"



GJMST

CONEXIÓN PARA MANGUERA MACHO TIPO BOSS
Male Hose Fitting Boss Type

Presión de Trabajo: 150psi
Working Pressure: 150psi

Código Code	Medida Size
	in
GJMST-88	1/2"-1/2"
GJMST-1212	3/4"-3/4"
GJMST-1616	1"-1"
GJMST-125	1.1/4"-1.1/4"
GJMST-150	1.1/2"-1.1/2"
GJMST-200	2"-2"
GJMST-300	3"
GJMST-400	4"



UHC

ABRAZADERA PARA MANGUERAS
Hose Clamps

Presión de Trabajo: 150psi
Working Pressure: 150psi

Código Code	Medida Size
	in
UHC-50-5	1/2"
UHC-75-U9	3/4"
UHC-100-U14	1"
UHC-125-19	1.1/4"
UHC-150-U24	1.1/2"
UHC-200-U29	2"
UHC-300-35	3"
UHC-400	4"





MANGUERAS INDUSTRIALES INDUSTRIAL HOSES

CONEXIONES TIPO CAM-LOCK CAM-LOCK COUPLINGS

UCHS

CONEXIÓN RÁPIDA PARA COMPRESORES (ESPIGA)
Compressors Camlock Coupling (Barb)

Código Code	Medida Size
	in
UCHS-25	1/4"
UCHS-40	3/8"
UCHS-50	1/2"
UCHS-75	3/4"
UCHS-100	1"
UCHS-125	1.1/4"
UCHS-150*	1.1/2"
UCHS-200*	2"

* Con 4 dientes

* Sizes With 4 Lug



UCFE

CONEXIÓN RÁPIDA PARA COMPRESORES (HEMBRA)
Compressors Camlock Coupling (Female)

Código Code	Medida Size
	in
UCFE-25	1/4"
UCFE-40	3/8"
UCFE-50	1/2"
UCFE-75	3/4"
UCFE-100	1"
UCFE-125	1.1/4"
UCFE-150*	1.1/2"
UCFE-200*	2"

* Con 4 dientes

* Sizes With 4 Lug



UCME

CONEXIÓN RÁPIDA PARA COMPRESORES (MACHO)
Compressors Camlock Coupling (Male)

Código Code	Medida Size
	in
UCME-40	3/8"
UCME-50	1/2"
UCME-75	3/4"
UCME-100	1"
UCME-125	1.1/4"
UCME-150*	1.1/2"
UCME-200*	2"

* Con 4 dientes

* Sizes With 4 Lug





CONEXIONES TIPO CAM-LOCK CAM-LOCK COUPLINGS

MANGUERAS INDUSTRIALES INDUSTRIAL HOSES

TWC

CONEXIÓN RÁPIDA PARA COMPRESORES (TRES VÍAS)
Compressors Camlock Coupling (Three Ways)

Código Code	Medida Size
	in
TWC	1/2"



CSB

CONEXIÓN PARA MANGUERA CHORRO DE ARENA
Sandblast Quick Coupling

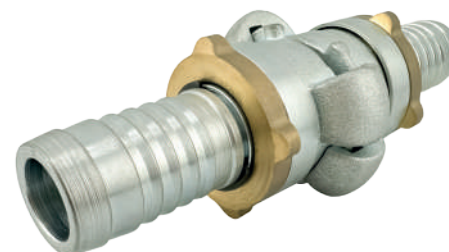
Código Code	Manguera Hose		Medida Size
	I.D	O.D	in
10-CSB	1"		1"
12-CSB	1.1/4"	2.5/32"	1.1/4"
15-CSB	1.1/2"	2.3/8"	1.1/2"



ESW-16

ACOPLES GIRATORIO PARA TUBERÍA DE AIRE, TIPO EUROPEO
European Air Pipe Swivel Coupling

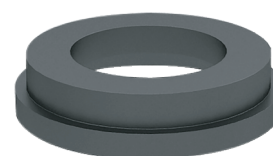
Código Code	Medida Size
ESW	1"



RG

ANILLO DE GOMA
Rubber Ring

Código Code	Medida Size
RG	1"
RG-2	2"





MANGUERAS INDUSTRIALES INDUSTRIAL HOSES

CONEXIONES TIPO CAM-LOCK CAM-LOCK COUPLINGS

NSB

CONEXIÓN PARA MANGUERA CHORRO DE ARENA (TERMINAL)
Sandblast Hose Coupling

Código Code	Rosca Thread	Manguera Hose		Medida Size
	NPS	I.D	O.D	in
10-NSB	1.1/4"	1"	1.7/8"	1"
12-NSB	1.1/4"	1.1/4"	2.5/32"	1.1/4"
15-NSB	1.1/2"	1.1/2"	2.3/8"	1.1/2"



FERRUL

PARA MANGUERAS INDUSTRIALES
For Industrial Hoses

Código Code	Medida Size	Material Material
	in	
FERRUL-16	1"	Aluminio / Aluminium
FERRUL-20	1.1/4"	Aluminio / Aluminium
FERRUL-24	1.1/2"	Aluminio / Aluminium
FERRUL-24B	1.1/2"	Bronce / Brass
FERRUL-32	2"	Aluminio / Aluminium
FERRUL-32B	2"	Bronce / Brass
FERRUL-40B	2.1/2"	Bronce / Brass
FERRUL-48	3"	Aluminio / Aluminium
FERRUL-48B	3"	Bronce / Brass
FERRUL-64	4"	Aluminio / Aluminium
FERRUL-64B	4"	Bronce / Brass
FERRUL-96B	6"	Bronce / Brass
FERRUL-128B	8"	Bronce / Brass



ARGOLLA

PARA MANGUERAS INDUSTRIALES
Sleeves

Código Code	Medida Size
	in
ARGOLLA	1/2" - 2.1/2"
ARGOLLA	3"-5"





MANGUERAS INDUSTRIALES
INDUSTRIAL HOSES

CONEXIONES TIPO CAM-LOCK
CAM-LOCK COUPLINGS

CRE

COLADOR ROSCADO ESTANDAR CON AGUJERO REDONDO HEMBRA NPT
Standard strainer female NPT

Código Code	Medida measure
CRE-20	2"
CRE-30	3"
CRE-40	4"



COMPOSICIÓN DE LAS MANGUERAS

HOSE COMPOUNDS

NOMBRE COMÚN	ASTM DESIGNACIÓN	COMPOSICIÓN	PROPIEDADES
Goma Natural	NR	Isopreno	Excelente propiedades físicas, incluyendo la abrasión. No resiste aceites
SBR	SBR	Estireno - Butadieno	Buenas propiedades físicas, incluyendo la abrasión. No resiste aceites
Butyl Rubber	IIR	Isobuteno-Isopreno	Muy buena resistencia a la intemperie. Baja permeabilidad . Buenas propiedades físicas. Baja resistencia a fluidos a base de petróleo.
EPDM	EPDM	Terpolímero de Etileno-Propileno-Dieno	Polímero de uso general. Excelente resistencia al ozono, calor e intemperie. No resiste aceites
Cross Linked Polyethylene	XLPE	Polietileno	Excelente resistencia a la mayoría de los solventes, aceites y químicos. No confundir con las propiedades químicas del polietileno estándar.
Ultra High Molecular Weight Polyethylene	UHMWPE	Polietileno de Peso Molecular	Excelente resistencia a la mayoría de los solventes, aceites e hidrocarburos. Excelente resistencia a la abrasión e intemperie. Apto para el contacto con alimentos. No confunda con las propiedades químicas del polietileno estándar.
Teflon	PTFE	Politetra-Fluoroetileno	Excelente resistencia a químicos y solventes. Apto para usar en la mayoría de los materiales. Suave superficie antiadhesiva. Fácil de limpiar.
Nitrile	NBR	Acilonitrilo-Butadieno	Excelente resistencia al aceite. Buenas propiedades físicas.
Neoprene	CR	Cloropreno	Excelente resistencia a la intemperie. Retardante de llama. Buena resistencia al aceite. Buenas propiedades físicas.
Hypalon	CSM	Polietileno Clorosulfonado	Excelente resistencia, al ozono, ácidos e intemperie. Buena resistencia a la abrasión y al calor. Se puede combinar para una buena resistencia al aceite
Polyurethane	AU	Uretano de Poliéster	Excelente resistencia a la abrasión y al desgaste. No resistente a la hidrólisis.
Viton	FKM	Fluorocarbono	Excelente resistencia a altas temperaturas, particularmente en aplicaciones con aire, o aceite. Muy buena resistencia a los productos químicos.

COMMON NAME	ASTM DESIGNATION	COMPOSITION	PROPERTIES
Natural Rubber	NR	Isoprene Rubber	Excellent physical properties, including abrasion resistance. Not oil resistant.
SBR	SBR	Styrene-Butadiene Rubber	Good physical properties, including abrasion resistance. Not oil resistant.
Butyl Rubber	IIR	Isobutene-Isoprene Rubber	Very good weathering resistance. Low permeability to air. Good physical properties. Poor resistance to petroleum based fluids.
EPDM	EPDM	Ethylene- Propylene-Diene Terpolymer	Good general purpose polymer. Excellent Heat, ozone and weathering resistance. Not oil resistant.
Cross Linked polyethylene	XLPE	Cross Linked polyethylene	Excellent resistance to most solvents, oil, and chemicals. Do not confuse with chemical properties of standard polyethylene.
Ultra High Molecular Weight Polyethylene	UHMWPE	Ultra High Molecular Weight Polyethylene	Excellent resistance to most solvents, chemicals and hydrocarbons. Excellent abrasion and wear resistance. Inert and suitable for food contact. Do not confuse with chemical properties of standard polyethylene.
Teflon	PTFE	Polytetra-Fluoroethylene	Excellent chemical and solvent resistant. Inert to most materials. Smooth anti-adhesive surface. Easy to clean.
Nitrile	NBR	Acrylonitrile-Butadiene	Excellent oil resistance. Good physical properties
Neoprene	CR	Chloroprene	Excellent weathering resistance. Flame retardant. Good oil resistance. Good physical properties
Hypalon	CSM	Chloro-Sulfonated Polyethylene	Excellent ozone, weathering and acid resistance. Good abrasion and heat resistance. Can be compounded for good oil resistance
Polyurethane	AU	Polyester Urethane	Excellent abrasion and wear resistance. Not resistant to hydrolysis
Viton	FKM	Fluorocarbon rubber	Excellent high temperature resistance, particularly in air, or oil. Very good resistance to chemicals

RESISTENCIA QUÍMICA

CHEMICAL RESISTANT

E Excelente / *Excellent*

F Bien / *Fair*

X Insatisfactorio / *Unsatisfactory*

G Bueno / *Good*

C Condicional / *Conditional*

En Blanco
Blank No Hay Datos Disponibles / *No Data Available*

MATERIAL O QUÍMICO CHEMICAL OR MATERIAL	COMPUESTO/ COMPOUND											
	NR	SBR	IIR	EPDM	XLPE	UHMWPE	PTFE	NBR	CR	CSM	AU	FKM
ACETALDEHYDE	F	X	E	E	E	E	C	X	CR	F	X	X
ACETIC ACID, GLACIAL	C	X	G	G	E	E	C	X	F	C	C	X
ACETIC ACID, 10%	G	F	G	E	E	E	C	E	E	E	X	G
ACETIC ACID,50%	X	F	G	E	E	E	C	F	F	E	X	F
ACETIC ANHYDRIDE	F	X	C	G	E	E	F	X	G	E	F	X
ACETIC OXYDE	F	X	G	G	E	E	F	X	G	E	F	X
ACETONE	C	C	E	E	E	E	X	X	CR	X	X	X
ACETONE CYANOHYDRIN	F		E	E				X	G	F	X	X
ACETONITRILE	G		E	E			E	X	E	G		X
ACETOPHENONE	C	X	G	E	E	E	X	X	X	X	X	X
ACETIL ACETONA	X	X	E	E			X	X	X	X	C	X
CLORURO DE ACETILO	X	X	X	X			E	X	X	C	X	G
ACETILO OXIDE	F		G	G	E	E	F	X	G	E	F	X
ACETYLENE	C	F	E	E	E	E	E	E	E	C	C	E
ACETYLENE DICHLORIDE	X	X	F	C			E	X	X	X		G
ACETYLENE TERACHLORIDE	X		X	C			X	X	CR	X	X	
ACROLEIN	G	F	E	E				F	G	G	X	C
ACRILONITRILO	C	F	X	E	E	E	G	X	X	C	X	X
ACRYLIC ACID	X			X			X	X	X	G	C	
ADIPIC ACID	E		X	C	E	E	G	E	E	G	E	E
AIR, 300 °F	X	X	G	G			E	G	G	G	C	E
ALK-TRI	X		X	X			X	X	X	X	X	E
ALLEY ALCOHOL	E		E	E	E	E		E	E	E		E
ALIQUE BROMIDE	X		X	X				X	X	X		G
ALLEY CHLORIDE	X	E	C	X	E	F	G	G	X	X		E
ALUM	E		E	G	E	E	C	C	E	E	G	E
ALUMINUM ACETATE	E	X	G	E			E	C	C	F	X	C
ALUMINUM CHLORIDE	E	E	E	E	E	E	E	E	E	E	C	E
ALUMINUM FLUORIDE	E	E	E	E	E	E	E	E	E	E	C	E
ALUMINIUM FORMAT	X		G	E				X	E	X	X	X
ALUMINIUM HYDROXIDE	E	G	E	E	E	E	E	E	E	E	G	E
ALUMINIUM NITRATE	E	E	E	E			E	E	E	E	C	E
ALUMINIUM SULFATE	E	G	A	E	E	E	C	E	G	E	C	E
AMINES-MIXED	C	G		G			G	X	C	X	X	X
AMINO BENZENE	X	X	E	C	E	E	E	X	X	C	X	E
AMINODIMETHILBENZENE	X		G	C				C	X	F		X
AMINOETHANE	C	X	G	E	E	E	E	C	C	F	X	X
AMINOXYLENE	X		G	E			G	C	X	X	X	F
AMMONIUM CARBONATE	E	E	E	E			C	C	E	C	C	E
AMMONIUM CHLORIDE	E	E	E	E	E	E	E	G	E	E	G	E
AMMONIUM HYDROXIDE	G	X	G	E	E	E	E	C	E	E	C	G
AMMONIUM NITRATE	E	E	E	E	E	C	E	E	E	E	C	E
AMMONIUM PHOSPHATE	E	E	E	E	E	E	C	E	E	E		E
AMMONIUM SULFATE	E	G	E	E	E	E	C	E	E	E	E	E
AMMONIUM SULFIDE	E	G	E	E	E	E	C	C	E	E		X
AMMONIUM THIOSULFATE	E		E	E				C	E	E	X	E
AMYL ACETATE	C	X	G	C	E	E	X	X	X	X	X	X
AMYL ACETONE	X		G	G				X	X	X		X
AMYL ALCOHOL	C	G	E	E	E	E	E	C	C	E	X	E
AMYL BROMIDE	X		X	C				X	X	X		G
AMYL CHLORIDE	X	X	X	X	E	E	X	X	X	F	E	
AMYL ETHER	X		X	X				C	X	F		
AMYLAMINE	F		G	X				F	C	F		C
ANETHOLE	X		X	X				X	X	X		G
ANILINE	X	X	E	C	E	E	E	X	X	C	X	E
ANILINE DYES	C	G	G	C	E	E	C	X	C	G	X	G
ANILINE OIL	X	X	G	C	E	E	G	X	X	C	X	F
ANIMAL FATS	X	X	C	C	E	E	E	E	C	F	F	E

RESISTENCIA QUÍMICA

CHEMICAL RESISTANT

E Excelente / Excellent

F Bien / Fair

X Insatisfactorio / Unsatisfactory

G Bueno / Good

C Condicional / Conditional

En Blanco / **Blank** No Hay Datos Disponibles / No Data Available

ANTIMONY PENTACHLORIDE	X			C	E	E		X	C	X	E	
AQUA REGIA	X	X	C	C	X	X	C	X	X	C	X	E
ARGON	X	C	G	E			E	E	G	X	C	E
ARSENIC ACID	E	E	E	E	E	E	E	E	E	E	C	E
ASPHALT	X	X	X	X	E	E	E	C	C	F	C	E
ASTM FUEL A	X	X	X	X			F	E	C	C	E	E
ASTM FUEL B	X	X	X	X			X	C	X	X	C	E
ASTM FUEL C	X	X	X	X			X	C	X	X	X	E
ASTM OIL NO. 1	X	X	X	X	E	E	E	E	E	C	E	E
ASTM OIL NO. 2	X	X	X	X	E	E	G	E	C	X	C	E
ASTM OIL NO. 3	X	X	X	X	E	E	G	E	C	C	C	E
ASTM OIL NO. 4	X	X	X	X			G	C	X	X	X	E
AUTOMATIC TRASMISSION FLUID	X	X	X	X			C	E	C	C	C	E
BANANA OIL	X		C	C			X	X	X	C	X	X
BARIUM CHLORIDE	E	E	E	E	E	E	E	E	E	E	E	E
BARIUM HYDROXIDE	E	E	E	E	E	E	E	E	E	E	E	E
BARIUM SULPHIDE	E	G	E	E	E	E	E	E	E	E	E	E
BEER	E	E	E	E	E	E	E	E	E	E	C	E
BEET SUGAR LIQUORS	E	E	E	E	E	E	E	E	C	E	X	E
BENZAL CHLORIDE			G					X				
BENZALDEHÍDO	X	X	G	E	E	E	C	X	X	X	X	X
BENZENE	X	X	X	C	E	F	C	X	C	C	X	E
BENZENE CARBOXYLIC ACID	X		E	C			E	X	E	C	X	E
BENZINE		X	X	X	E	E	F	E	C	C	F	E
BENZOIC ACID	X	X	C	C			C	X	E	C	X	E
BENZOL	X	X	X	C	E	F	C	X	C	C	X	E
BENZOTRICHLORIDE	X			E			E	X	X	X		
BENZYL ACETATE	X		E	E				X	E	G	X	X
BENZYL ALCOHOL	X	X	E	C			E	X	C	C	X	E
BENZYL CHLORIDE	X	X	X	X			E	X	X	X	X	C
BENZYL ETHER	X	X	G	C			F	X	X	X	C	X
BLACK SULFATE LIQUOR	G	G	G	G	E	E		G	G	G	X	E
BLEACH	C	X	E	E	G	F	E	X	C	E	C	G
BORAX SOLUTION	C	G	E	E	E	E	E	C	E	E	E	E
BORIC ACID	E	E	E	E	E	E	E	E	E	E	E	E
BRAKE FLUID	X	E	E	E			E	C	C	C	X	X
BRINE	E		E	E	E	E	E	E	E	E	G	E
BROMACIL												
BROMOBENZENE	X	X	X	X			X	X	X	X	X	E
BROMOCHLOROMETANE	X		C	G	F	F		X	X	X		F
BROMOETHANE	C	X	C	X	E	E	E	C	X	X	X	E
BROMOTOLUENE	X		X					X		X		G
BUNKER OIL	X	X	X	X			E	E	G	C	C	E
BUTADIENE	X	X	X	X	E	E	C	X	X	G	X	E
BUTANE	X	X	X	X	E	E	C	E	E	C	E	E
BUTANOIC ACID	C		X	C			E	C	X	C	C	E
BUTANOL	E	E	C	C	E	E	E	E	E	E	X	E
BUTANONE	X	X	E	E	E	E	X	X	X	X	X	X
BUTOEXETHANOL	X		C	E			F	C	X	G	X	X
BUTYL ACETATE	X	X	C	C	E	E	X	X	X	X	X	X
BUTYL ACRYLATE	X	X	X	C	E	E	X	X	X	X		X
BUTYL ALCOHOL	E	E	C	C	E	E	E	E	E	E	X	E
BUTYL ALDEHYDE	X	X	C	C	E	E	X	X	X	X	C	X
BUTYL, BENZYL, PHTHALATE	X		E	E	E	E		X	E	X	X	F
BUTYL CARBITOL	X	X	E	E			C	X	X	C	X	F
BUTYL CELLOSOLVE	X	X	C	C	E	E	F	C	X	G	X	X
BUTYL CHLORIDE	X		F	X				X	X	X	E	E
BUTYL ETHER	X	X	C	C	E	E	X	X	C	X	C	X
BUTYL ETHER ACETALDEHYDE	X		G	X				X	X	X		X
BUTYL ETHYL ETHER	X		X	F				G	X	C		
BUTYL OLEATE	X	X	C	C			C	X	X	X		E
BUTYL PHTHALATE	X	X	G	E	E	E	C	X	X	X	X	F

RESISTENCIA QUÍMICA

CHEMICAL RESISTANT

E Excelente / Excellent

F Bien / Fair

X Insatisfactorio / Unsatisfactory

G Bueno / Good

C Condicional / Conditional

En Blanco / Blank No Hay Datos Disponibles / No Data Available

BUTYL STEARATE	X	X	C	X	E	E	C	C	X	X	G	E
BUTYLENE	X	X	X	X			C	C	C	C	C	E
BUTYRALDEHYDE	X	X	C	C	E	E	X	X	X	X	C	X
BUTYRIC ACID	C	X	X	C	E	E	E	C	X	C	C	G
BUTYRIC ANHYDRIDE	F		F	E				C	G	G	X	
CADMIUM ACETATE	X		E					X		E		X
CALCIUM ALUMINATE	E		E					E		E		E
CALCIUM BICHROMATE			E	E				C	E	F		
CALCIUM BISULFIDE	X	G	X	E			E	C	E	F	C	E
CALCIUM CHLORIDE	E	E	E	E	E	E	E	E	E	E	E	E
CALCIUM HYDROXIDE	E	E	E	E	E	E	E	E	E	E	C	E
CALCIUM HYPOCHLORITE	C	X	E	E	E	E	E	C	C	E	C	E
CALCIUM NITRATE	E	E	E	E			E	E	E	E	E	E
CALCIUM SULFIDE	C	X	E	E			E	E	E	E	C	E
CALCIUM ACETATE	E	X	E	E			C	C	C	C	X	E
CAPRYLIC ACID	C		F					F		G		
CARBAMIDE	E		E	E	E	E	F	G	G	E	G	E
CARBITOL	C	E	C	C	E	E	E	C	C	C	X	E
CARBOLIC ACID PHENOL	C		C				E			C	C	
CARBON DIOXIDE	G	G	E	G	E	E	E	E	G	E	E	E
CARBON DISULFIDE	X		X	X	C	C	C	X	X	X	C	E
CARBON MONOXIDE	C	G	E	E	E	E	E	E	C	C	E	E
CARBON TETRACHLORIDE	X		X	X	E	E	X	X	X	X	C	E
CARBONIC ACID	E	G	E	E	E	E	E	C	E	E	E	E
CASTOR OIL	E	E	C	C	E	E	E	E	E	E	E	E
CAUSTIC SODA	E	E	E	G	E	E	E	C	G	E	C	E
CELLOSOLVE ACETATE	C	X	C	G	E	E	C	X	X	X	C	X
CELLUGUARD	E	E	E	E			E	E	E	E	X	E
CETYLIC ACID	C	G	C	C	E	E	E	E	G	C	C	E
CHINA WOOD OIL	X	X	C	X	E	E	E	E	C	C	C	E
CHLORINATED SOLVENTS	X	X	X	X	E	E	C	X	X	X	X	E
CHLORO-2-PROPANONE	X		C				C			X	X	
CHLOROACETIC ACID	X	X	C	C	E	E	C	X	X	G	X	G
CHLOROACETONE	X	X	C	E	E	E	C	X	X	X	X	X
CHLOROBENZENE	X	X	X	X	E	E	C	X	X	X	X	E
CHLOROBUTANE	X		F	X				X	X	X	E	E
CHLORODANE	X	X	X	X			C	C	C	C	C	E
CHLOROETHYL BENZENE	X		X	X				C	X	X	C	
CHLOROFORM	X	X	X	X	F	F	E	X	X	X	X	E
CHLOROPENTANE	X		X	X			C	X	X	X	F	E
CHLOROSULFONIC ACID	X	X	X	X	F	X	C	X	X	X	X	X
CHLOROTOLUENE	X	X	X	X			C	X	X	X	X	E
CHLOROX	X	X	C	G			E	C	C	C	X	E
CHROME PLATING SOLUTIONS	X	X	C	C			E	X	X	X	X	E
CHROMIC ACID	C	X	C	C	E	E	E	X	X	E	C	E
CHROMIUM TRIOXIDE	X	X	G	C			E	X	X	E	X	C
CINNAMENE	X	X	X	X			X	C	X	X	C	G
CIS-9-OCTADECENOIC ACID	X	X	X	C	E	E	E	G	C	C	C	E
CITRIC ACID	E	E	E	E	E	E	E	E	E	E	E	E
COAL TAR OIL	X	X	X	X	E	E	E	E	G	F	F	E
COAL TAR	X	X	X	X	E	E	C	C	C	C	C	E
COAL TAR NAPHTHA	X		X	X	E	E	E	X	X	X	G	E
COCONUT OIL	X	X	C	C	E	E	C	E	C	C	C	E
COKE OVEN GAS	C	X	C	X	E	E	C	X	X	C	X	E
COOLANOL	X	X	X	X			E	E	C	C	X	E
COOPER CHLORIDE	E	E	E	E	E	E	E	E	C	C	E	E
COPPER CYANIDE	E	E	E	E	E	E	G	E	E	E	E	E
COPPER HYDRATE	F		E					G		G		F
COPPER HYDROXIDE	F		E					G		G		F
COPPER SULFATE	C	G	C	E	E	E	E	E	E	E	C	E
CORN OIL	X	X	C	C	E	E	E	E	C	C	E	E
COTTONSEED OIL	X	X	C	C	E	E	C	E	C	C	E	E

RESISTENCIA QUÍMICA

CHEMICAL RESISTANT

E Excelente / Excellent

F Bien / Fair

X Insatisfactorio / Unsatisfactory

G Bueno / Good

C Condicional / Conditional

En Blanco No Hay Datos Disponibles / No Data Available

CREOSOTE	X	X	X	X	E	E	C	C	C	X	C	E
CRESOLS	X	X	X	X	E	E	E	X	X	X	X	E
CRESYLIC ACID	X	X	X	X	E	E	C	X	X	X	X	E
CROTONALDEHYDE	X	F	E	E	E	E		X	X	X	X	X
CRUDE OIL	X	X	X	X	E	E	C	C	C	C	E	E
CUMENE	X	X	X	X			C	X	X	X	X	E
CUPRIC CARBONATE												E
CUPRIC HYDROXIDE	F		E					G		G		F
CUPRIC NITRATE	G		E	C	E	E	G	C	E	E	G	E
CUPRIC SULFATE	C	G	C	E	E	E	E	E	E	E	C	E
CIUTTING OIL	C	X	X	X			C	E	C	C	E	E
CYCLOHEXANE	X	X	X	X	E	E	C	E	X	C	C	E
CYCLOHEXANOL	C	X	X	X	E	E	C	G	C	C	F	E
CYCLOHEXANONE	X	X	C	C	E	E	C	X	X	X	X	X
CYCLOPENTANE	X		X	X			C	G	C	X	E	E
CYCLOPENTANOL												G
CYCLOPENTANONE	X		X					X		X		X
CYCLOPENTIL ALCOHOL				C				X	F			
D-FURALDEHYDE	X		C	E			C	G	F	C	C	
DDT IN KEROSENE	X	X	X	X			X	E	C	C	G	E
DECAHYDRONAPHTHALENE	X	E	X	X	E	E	C	X	X	X	X	X
DECALIN	X	E	X	X	E	E	C	X	X	X	X	X
DECYL ALCOHOL	X		X	X				E	X	C	E	G
DECYL ALDEHYDE	X		F	X				X		X		X
DECYL BUTYL PHTHALATE	X		E					X		X		F
DETERGENT, WATER SOLUTION	E	G	E	E	E	E	E	E	C	C	G	E
DEVELOPING FLUID	E	G	C	C			E	E	E	E	E	E
DEXTRON	X	X	X	X			E	E	C	X	C	E
DI (2ETHYLLHEXYL) ADIPATE	X		E	G	G	G		X	X	X		F
DI (2ETHYLLHEXYL) PHTHALATE	X	X	C	C	E	E	C	X	X	X	C	G
DI-ISO-BUTYLENE	X	X	X	X	E		C	C	C	X	X	E
DI-ISO-DECYL PHTHALATE	X		E	E				X	X	X		F
DI-ISO-PROPANOLAMINE	G		E	E				G	G	F		
DI-ISO- PROPYL ETHER	X		X	X	E	E	X	G	C	C	G	X
DI-ISO- PROPYL KETONE	X	X	E	E	E		C	X	X	X	X	X
DI-P-MENTHA-1,8-DIENE	X		X	X				C	X	X		E
DIACETONE ALCOHOL	X	X	E	E	E	E	X	X	F	C	X	X
DIACETHYLMETHANE		X	E	E			X	X	X	X	F	X
DIAMMONIUM ORTHOPHOS- PHATE				E				E	E			
DIAMYL NAPHTHALENE	X		E		E	E				X		
DIAMYLAMINE	G	X	E	E			E	G	C	C	E	X
DIAMYLENE	X		X	X					X	X		E
DIAMYLPHENOL	X		X		E	E		X		X		E
DIBENZYL ETHER	X	X	C	C			C	X	X	X	C	X
DIBROMOBENZENE	X		X	X				X	X	X		E
DIBROMOMETHANE	X		X	C			G	X	X	X	C	E
DIBUTYL ETHER	X	X	C	C	E	E	X	X	C	X	C	X
DIBUTYL PHTHALATE	X	X	C	C	E	E	C	X	X	X	C	C
DIBUTYL SEBACATE	X	X	C	C	E	E	C	X	X	X	X	E
DIBUTYLAMINE	X	X	X	F			C	X	C	C	X	X
DICALCIUM PHOSPHATE	E		E	E				E	E	E		E
DICHLOROETHYLENE	X		C	C	F	F	C	X	X	X	X	E
DICHLOROACETIC ACID	X	X	C	X	E	E		X	X	X	C	X
DICHLOROBENZENE	X	X	X	X			X	X	X	X	X	E
DICHLOROBUTANE	X	X	X	X			C	C	X	X	X	E
DICHLORODIFLUOROMETHANE	C	E	C	C	E	G	X	C	C	C	C	G
DICHLOROETHANE	X	X	C	X	E	E	C	X	X	X	X	E
DICHLOROETHYL ETHER	X		X	X			E	X	X	X		
DICHLOROHEXANE	X		X	X				X	X	X		E
DICHLOROMETHANE	X	X	X	X			C	X	X	X	X	G
DICHLOROPENTANE	X	X	X	X				X	X	X	X	E

RESISTENCIA QUÍMICA

CHEMICAL RESISTANT

E Excelente / Excellent

F Bien / Fair

X Insatisfactorio / Unsatisfactory

G Bueno / Good

C Condicional / Conditional

En Blanco / **Blank** No Hay Datos Disponibles / No Data Available

DICHLOROPROPANE	X		X	X	G	G		F	X	X	C	E
DICHLOROPROPENE	X		X	X	G	G		C	X	X	C	
DIESEL OIL	X	X	X	X	E	E	E	E	C	C	C	E
DIETHANOL AMINE	G	X	E	G			E	C	G	F	C	X
DIETHYLBENZENE	X	X	X				C			X	X	E
DIETHYL ETHER	X	X	X	X	E	E	X	X	X	X	C	X
DIETHYL KETONE	X		G	G	E	E		X	X	X		
DIETHYL OXALATE	F		X	X				X	X	X		
DIETHYL PHTHALATE	X		X	F	E	E		X	X	X	C	F
DIETHYL SEBACATE	X	X	G	F			C	C	X	F	X	G
DIETHYL SULFATE	X	E	C	E			C	X	E	X	X	X
DIETHYL AMINE	C	G	C	C	E	E	C	C	C	C	C	X
DIETHYLENE GLYCOL	E	E	E	E	E	E	E	E	E	E	X	E
DIETHYLENE OXIDE	X		X	E			X	X	X	X	C	X
DIETHYLENETRIAMINE	G	X	E	E			E	G	X	F		X
DIHYDROXY SUCCINIC ACID	E		G	G			E	G	G	E	E	E
DIHYDROXYDIETHYL ETHER	E		E	E	E	E	E	E	E	E	X	E
DIISOBUTYL KETONE	X	X	G	E	E	E	C	X	X	X	X	E
DIISODECYL PHTHALATE	X		E	E	E	E		X	X	X		F
DIISOOCTYL ADIPATE	X		E	E				X	X	X		F
DIISOOCTYL PHTHALATE	X		E	G	E	E		X	X	X		F
DIMETHYL CARBINOL	E		E	E	E	E	E	C	G	E	X	E
DIMETHYL KETONE	C	F	E	E	E	E	X	X	C	X	C	X
DIMETHYL PHTHALATE	X	X	C	C	E	E	C	X	X	X	X	E
DIMETHYL SULFATE	X		G	X	E	E		X	X	X	G	X
DIMETHYL SULFIDE	X		F	X				X	X	X		
DIMETHYLAMINE	G	X	G	E	E	E		F	X	X	X	X
DIMETHYLANILINE	X	X	G	E			G	X	X	X	X	X
DIMETHYLBENZENE	X	X	X	X			X	X	X	X	C	E
DIMETHYLBUTANE	X		X				X			X	G	
DIOXANE	X	X	C	C	E	E	X	X	X	X	X	X
DIPENTENE	X	X	X	X			C	C	X	X	X	E
DIPENTYLAMINE	G	X	E	E			E	G	C	C	E	X
DIPROPYLAMINEOLAMINE												
DIPROPYLENE GLYCOL	E		E	E				E	E	E		E
DISODIUM PHOSPHATE	E		E	E				E	E	E	E	E
DIVINYL BENZENE	X	X	X	X				X	X	X	X	E
DOWTHERMN, A AND E	X	X	X	X			C	X	X	C	X	E
DRY CLEANING FLUIDS	X	X	X	X			G	C	X	X	X	E
ETHANOIC ACID		G		C	E	E		C	C			X
ETHANOL	E	E	E	E	E	E	E	C	E	E	C	E
ETHANOLAMINE	C	X	C	E			E	C	C	C	C	X
ETHERS	X	X	X	X	E	E	X	F	X	X	C	X
ETHYL ACETATE	X	X	C	C	E	E	X	X	X	X	C	X
ETHYL ACETOACETATE	C	F	C	C			X	X	X	X	C	X
ETHYL ACETONE	X		G	G				X	X	X		X
ETHYL ACRYLATE	X	X	C	C			C	X	X	X	X	X
ETHYL ALCOHOL	E	E	E	E	E	E	E	C	E	E	C	E
ETHYL ALDEHYDE	C		E	E	E	E	C	X	X	F	F	X
ETHYL ALUMINIUM DICHLORIDE	X		X					X		X		G
ETHYL BENZENE	X	X	X	X	E	E	F	X	X	X	X	E
ETHYL BROMIDE	C	X	X	X	E	E	E	C	X	X	X	E
ETHYL BUTYL ACETATE	X		E					X		G		X
ETHYL BUTYL ALCOHOL	E		E							E		G
ETHYL CELLULOSE	C	G	C	C	E	E	E	C	C	C	C	X
ETHYL CHLORIDE	C	G	E	C	E	E	G	E	X	C	C	E
ETHYL DICHLORIDE	X	X	F	X	E	E	E	X	X	X	X	G
ETHYL ETHER	X	X	X	X	E	E	X	X	X	X	C	X
ETHYL FORMATE	X	X	C	C			E	X	C	C		E
ETHYL IODIDE	X		F	F	E	E		X	X	X		G
ETHYL OXALATE	E	X	X	E			E	X	X	X	E	E
ETHYL PHTHALATE	X		X	F	E	E		X	X	X	C	F

RESISTENCIA QUÍMICA

CHEMICAL RESISTANT

E Excelente / Excellent

F Bien / Fair

X Insatisfactorio / Unsatisfactory

G Bueno / Good

C Condicional / Conditional

En Blanco No Hay Datos Disponibles / No Data Available
Blank

ETHYL SILICATE	C	G	E	E			E	E	E	C	X	E
ETHYL-N-BUTYL KETONE	X		G	G				X	X	X		X
ETHYL-1 BUTANOL	E		E	E				E	E	E		
ETHYLAMINE	C	X	C	E			E	C	C	F	X	X
ETHYLENE CHLOROXYDRIN	C	G	C	C			E	X	C	C	X	E
ETHYLENE DIAMINE	C	G	E	E	E	E	G	C	E	C	X	X
ETHYLENE DIBROMIDE	X	X	C	C	F	F	G	X	X	X	X	G
ETHYLENE DICHLORIDE	X	X	C	X	F	F	C	X	X	X	X	E
ETHYLENE GLYCOL MONOETHYL ACETATE												E
ETHYLENE GLYCOL MONOBUTYL ETHER	X	X	E	E	E	E	G	F	X	C	X	X
ETHYLENE GLYCOL MONOETHYL ETHER	X		C	C	E	E	C	C	X	X	X	X
ETHYLENE GLYCOL	E	E	E	E	E	E	E	E	E	E	C	E
ETHYLENE OXIDE	X	X	C	C	E	E	X	X	X	X	X	X
FATTY ACIDS	X	X	C	X	E	G	E	C	C	C	G	E
FERRIC BROMIDE	E		E					E		E		E
FERRIC CHLORIDE	E	E	E	E		E	E	E	C	C	E	E
FERRIC NITRATE	E	E	E	E		E	E	E	E	E	E	E
FERRIC SULFATE	E	E	E	E		E	E	E	E	E	E	E
FERROUS ACETATE	X		E	G				X	X	E		X
FERROUS CHLORIDE	E		E	E		E	E	E	E	E	E	E
FERROUS SULFATE	E	E	E	E		E	E	E	E	E	E	E
FLUOROBORIC ACID	E	E	C	E	E	E		E	E	E	X	E
FLUORINE	X		X	E	G	G		X	X	X	X	E
FLUOROSILICIC ACID	E	G	E	E	E	E	E	E	E	E	C	E
FORMALDEHYDE	C	G	C	C	E	E	C	C	C	C	C	E
FORMALIN	C	G	C	E	E	E	C	G	G	C	C	E
FORMIC ACID	C	E	E	E	E	E	C	C	C	E	X	C
FREON 113	C	G	X	X			X	E	E	C	C	E
FREON 12	X	E	X	C	F	G	X	C	C	E	E	E
FREON 22	C	E	C	C	F	E	X	X	E	E	X	X
FUEL A	X		X	X			F	E	C	C	E	
FUEL B	X		X	X			X	C	X	X	C	
FUEL OIL	X	X	X	X	E	E	C	E	C	C	C	E
FURAN	X	X	X	X	E	E		X	X	X		
FURFURAL	X	X	E	C	E	E	E	X	X	X		X
FURFURAN	X	X	X	X	E	E	C	X	X	X	X	X
FURFURYL ALCOHOL	X	X	C	C	E	E	G	X	X	X	X	X
GALLIC ACID	E	G	C	C	E	E	E	C	C	C	X	E
GALLOTANNIC ACID	E		G	E			E		E	E	E	E
GAS, COAL											G	
GASOLINE	C	X	C	X	E	E	C	E	X	C	C	E
GLACIAL ACRYLIC ACID	X		X	X			X	X	X	G	C	
GLUCONIC ACID	X		F	E				C	E	G		
GLUCOSE	E	E	E	E	E	E	E	E	E	E	E	E
GLYCERINE	E	E	E	E	E	E	E	E	E	E	G	E
GLYCEROL	E	E	E	E	E	E	E	E	E	E	G	E
GLYCOGENIC ACID	X		F	E				F	E	G		
GLYCOLS	E	E	E	E	E	E	E	E	E	E	C	E
GLYCONIC ACID	X		F	E				F	E	G		
GLYCYL ALCOHOL												
GREASE	X	X	X	X			G	E	F	C	E	E
GREEN SULPHATE LIQUOR	C	G	E	E			E	C	C	G	E	E
HELIUM	E	E	E	E			E	E	E	E	E	E
HEPTALDEHYDE	X	X	C	C			C	E	C	X	C	
HEPTANAL	X	X	C	C			C	E	C	X	C	
HEPTANE	X	X	X	X		E	C	E	C	C	C	F
HEPTANOIC ACID	X		X	X				E	C	C	E	
HEXADECANOIC ACID	E	G	G	G	E	E		E	X	X	E	E
HEXALDEHYDE	X	X	C	C	E	E	C	X	C	C	C	X
HEXANE	X	X	X	X	E	E	C	E	C	C	C	E

RESISTENCIA QUÍMICA

CHEMICAL RESISTANT

E Excelente / Excellent

F Bien / Fair

X Insatisfactorio / Unsatisfactory

G Bueno / Good

C Condicional / Conditional

En Blanco / **Blank** No Hay Datos Disponibles / No Data Available

MAGNESIUM HYDRATE	C	G	E	E	E	E	G	C	C	E	C	G
MAGNESIUM HYDROXYDE	C	G	E	E	E	E	G	C	C	E	C	G
MAGNESIUM SULFATE	C	G	E	E	E	E	E	E	E	E	G	E
MALEIC ACID	X	X	X	C	E	E	E	X	X	X	C	E
MALEIC ANHYDRIDE	X	X	C	C			E	X	X	X		G
MALIC ACID	E	G	X	C	C	C	E	E	C	C	C	E
MAGNOUS SULFATE	G		G	E			E	E	E	E	X	
MERCURY	E	E	E	E	E	E	E	E	E	E	E	E
MERCURY VAPORS	G	E	E	E			E	E	G	E		E
MESITYL OXIDE	X	X	F	C			X	X	X	X	X	X
METHALLYL ALCOHOL	E		E	E				E	E	E		G
METHALLYL CHLORIDE	X		X						X	X	C	
METHANE CARBOXYLIC ACID					E	E						
METHANOIC ACID	C	E	E	E	E	E	C	G	E	E	X	C
METHANOL	E	E	C	E	E	E	E	C	E	E	C	E
METHOXY ETHANOL	E		E	E	E	E		C	E	E	X	
METHYL ACETATE	C	X	C	C			X	X	C	X	X	X
METHYL ACETOACETATE	X	X	C	C			X	X	X	X	X	
METHYL ACETONE	X	X	E	E	E	E	X	X	X	X	X	
METHYL ALLYL CHLORIDE	X		X						X	X	C	F
METHYL AMYL CARBINOL	G		G	E			C	E	G	E	X	G
METHYL BENZENE	X	X	X	X	F	F	X	X	X	X	X	E
METHYL BROMIDE	X	X	C	X	F	F	G	C	X	X	X	E
METHYL BUTANE	X		X	X			X	E	X	X	G	
METHYL BUTYL KETONE	X	X	E	E	E	E	X	X	X	X	X	X
METHYL CARBITOL				G			E	F	F			
METHYL CELLOSOLVE	X	X	C	C	E	E	E	C	C	C	X	X
METHYL CHLORIDE	X	X	C	C	F	F	X	X	X	X	X	E
METHYL CYANIDE	G		E	C			E	C	E	G	X	X
METHYL ETHYL KETONE	X	X	E	E	E	E	X	X	X	X	X	X
METHYL HEXANOL	E		E	E				E	E	E		G
METHYL METHACRILATE	X	X	X	X	E	E	X	X	X	X	X	X
METHYL NORMAL AMYL KETONE	X			E				C	E	X		X
METHYL PROPYL ETHER	X		X	X				X	X	C	X	
METHYL SALICYLATE	X		C	C	E	E	F	X	X	X		
METHYL STYRENE	X		X	X				X	X	X		
METHYL SULFIDE	X		F	X				X	X	X		
METHYL-ISO-AMYL-KETONE	X		G							X		
METHYL-2-BUTANONE	X	X	C	C			X	X	X	X	X	X
METHYL-2-HEXANONE	X		G							X		
METHYL-2-PENTANOL	G		E	E				G	G	E		C
METHYL-2-PENTANONE	X		C	C			X	X	X	X	X	
METHYL-4-ISOPROPYL BENZENE	X		X	X			F	X	X	X	X	E
METHYL AMYL ACETATE	X									X		X
METHYL AMYL ALCOHOL	G		E	E				G	G	E		C
METHYLCYCLOHEXANE	X		X	X				X	X	C		G
METHYLENE BROMIDE	X		X	X	E	E	G	C	X	X	C	G
METHYLENE CHLORIDE	X	X	X	C	F	F	C	X	X	X	X	G
METHYLETHYL KETONE	X	X	E	E			X	X	X	X	X	X
METHYL HEXYL KETONE	X		G	G	E			X	C	X	X	X
METHYL ISOBUTYL CARBINOL	G		E	C				X	X	E		C
METHYLISOBUTYL KETONE	X	X	C	C	E	E	X	X	X	X	X	X
METHYLISOPROPYL KETONE	X	X	C	C			X	X	X	X	X	X
METHYLLACTONITRILE	F		E	E				X	G	F	X	
METHYLPROPYL CARBINOL	E		E					E		E		G
METHYLPROPYL KETONE	X		G	G	E	E		X	X	X		X
MIL-A-6091	E		E	E				C	E	E	X	
MIL-C-4339	X		X	X				E	X	X	E	
MIL-C-7024	X		X	X				E	C	X	E	
MIL-E-9500	E	E	E	E				E	E	E	C	E
MIL-F-16884	X	X	X	X				E	C	C	C	E
MIL-F-17111	X	X	X	X				E	C	X	C	E

RESISTENCIA QUÍMICA

CHEMICAL RESISTANT

E Excelente / Excellent

F Bien / Fair

X Insatisfactorio / Unsatisfactory

G Bueno / Good

C Condicional / Conditional

En Blanco No Hay Datos Disponibles / No Data Available
Blank

MIL-F-25558	X	X	X	X				E	E	C	C	G	
MIL-G-10924	X	X	X	X					E	C	C	G	E
MIL-G-25013	C	X	X	E					E	C	C	C	
MIL-G-25537	X	X	X	X					E	C	C	G	
MIL-G-3545	X		X	X					E	C	C	E	
MIL-G-5572	X	X	X	X					E	X	X	C	E
MIL-G-7711	X	X	X	X					E	X	X	E	E
MIL-H-05606	X		X	C					E	C	C	C	E
MIL-H-13910	E	E	G	E					E	E	G	X	E
MIL-H-19457	X	X	E	C					X	X	X	X	C
MIL-H-22251		G	E	E					C	C	C		
MIL-H-27601	X		X	X					G	C	C	C	X
MIL-H-5606	X		X	C			E		E	C	C	C	E
MIL-H-6083	C	X	X	X					E	E	C	G	E
MIL-H-8446	X	X	X	X			E		G	E	C	C	E
MIL-J-5161	X	X	X	X					C	X	X	C	E
MIL-J-5624	X	X	X	X			C		E	X	X	C	E
MIL-L-15016	X	X	X								C	E	E
MIL-L-17331	X	X	X								G	E	E
MIL-L-2104	X		X	X					E	C	C	E	
MIL-L-21260	X	X	X	X					E	C	C	E	
MIL-L-23699	X	X	X	X			E		C	C	C	C	
MIL-L-25681	C	G	E	E					C	C	C	C	
MIL-L-3150	X	X	X	X					E	C	C	C	E
MIL-L-4343		X											E
MIL-L-6082		X											E
MIL-L-6085	X	X	X	X					C	X	X	C	E
MIL-L-7808	X	X	X	X			E		G	X	X	X	E
MIL-L-7870	X	X	X	X					E	C	X	C	E
MIL-L-9000	X	X	X	X					E	C	C	C	E
MIL-L-9236	X	X	X	X					C	X	X	X	E
MIL-P-27402		G	E	E					C	C	C		
MIL-R-25576	X		X				E				C	E	
MIL-S-3136 TYPE 1 FUEL	X	X	X	X					E	C	C	G	E
MIL-S-3136 TYPE 2 FUEL	X	X	X	X					C	X	X	C	E
MIL-S-3136 TYPE 3 FUEL	X	X	X	X					G	X	X	C	E
MIL-S-3136 TYPE 4 OIL LOW SWELL	X	X	X	X					E	X	C	E	E
MIL-S-3136 TYPE 5 OIL MED SWELL	X	X	X	X					E	G	G	E	E
MIL-S-3136 TYPE 5 OIL HI SWELL	X	X	X	X			E		E	X	C	E	E
MIL-S-81087	E	E	E	E					E	E	E	E	
MINERAL OIL	X	X	C	X	E	E	E		E	C	C	E	E
MINERAL SPIRITS	X	X	X	X					C	C	G	C	E
MOBILE HF A	X	X	X	X			E		E	C	X	G	E
MOLTEN SULFUR	G		G	E					G	E	E	G	E
MONO-CHLOROACETIC ACID	C	X	G	G	E	E	X		X	C	G		
MONOBUTYL ETHER	X	X	C	C					G	C	C	C	X
MONOCHLOROBENZENE	X	X	X	X	F	F	C		X	X	X	X	E
MONOCHLORODIFLUOROMETHANE	C	E	C	C	E	E	X		X	C	E	X	C
MONOETHANOL AMINE	C	G	C	C				E	G	G	C	C	X
MONOETHYL AMINE	C	F	C	E				E	C	C	F	X	X
MORPHOLINE	X		C	C					X	X	X	C	
MOTOR OIL 40W	X		X	X					E	C	C	G	E
MTBE			G					G	X	X			
MURIATIC ACID	C	X	C	F					C	C	C	C	E
N-BUTANAL	X	X	C	C	E	E	X		X	X	X	C	X
N-BUTYLAMINE	X	X	C	C				C	C	X	X	X	X
N-BUTYLBENZENE	X		X	X					X	X	X		G
N-BUTYLBUTYRATE	X	X	E	E			E		X	X	X		E
N-BUTYLCARBINOL	E		E	E	E	E	E		E	E	E	X	G
N-NONYL-ALCOHOL	E		E	E					E	E	E		G

RESISTENCIA QUÍMICA

CHEMICAL RESISTANT

E Excelente / Excellent

F Bien / Fair

X Insatisfactorio / Unsatisfactory

G Bueno / Good

C Condicional / Conditional

En Blanco / **Blank** No Hay Datos Disponibles / No Data Available

N-OCTANE	X	X	X	X	E	E	C	C	G	X	X	E
NAPHTHA	X	X	X	X	E	E	E	C	X	C	F	E
NAPHTHALENE	X	X	X	X	E	E	F	X	X	X	C	E
NAPHTHENIC ACID	X	X	X	X			E	C	X	X		E
NATURAL GAS	C	F	X	X	E	E	E	E	E	E	F	E
NEOHEXANE	X		X	X				E	G	X	X	E
NEON GAS	E	E	E	E			E	E	E	E	E	E
NEU-TRI	X		X					X		X		E
NICKEL ACETATE	E	X	E	E			X	C	G	X	X	X
NICKEL CHLORIDE	E	E	E	E	E	E	E	E	C	E	C	E
NICKEL NITRATE	E		E	E	E	E			E	E	C	E
NICKEL SULFATE	C	G	E	E	E	E	E	E	E	E	E	E
NITRIC ACID, CONC	X		X	X			C	X	X	X	X	
NITRIC ACID, RED FUMING	X	X	X	X	X	X	F	X	X	X	X	E
NITRIC ACID 10%	X	X	E	E	E	E	E	X	G	E	X	E
NITRIC ACID, 13N	X						C	X	X		X	
NITRIC ACID , 13N + 5%	X						C	X	X		X	
NITRIC ACID, 20%	X	X	G	E	E	E	E	X	X	E	X	E
NITRIC ACID, 30%	X	X	F	F	G	G	E	X	X	E	X	E
NITRIC ACID, 30% - 70%	X	X	F	X	F	F	G	X	X	C	X	E
NITRILOTRIETHANOL	C	G	E	E	E	E	E	F	C	C	X	X
NITROBENZENE	X	X	F	C	E	E	E	X	X	X	X	G
NITROETHANE	G	G	G	C			C	X	C	G	X	X
NITROGEN	E	E	E	E	E	E	E	E	E	E	E	E
NITROMETHANE	G	C	G	C			C	X	C	C	X	X
NITROUS OXIDE GAS				E			F	E	G			E
NONANOIC ACID	X		E		E	E		E		X		
NONANOL	E		E	E				E	E	E		
OCTANOIC ACID	F		F				G	F		G		
OCTANOL	C	E	C	C			E	C	C	C	X	E
OCTYL ACETATE	C	X	E	G	E	E		C	C	E	X	
OCTYL ALCOHOL	C	E	C	C			E	C	C	C	X	G
OCTYL ALDEHYDE	X		F		E	E		X		X		X
OCTYL AMINE	F		E	G				F	G	F		X
OCTYL CARBINOL	E		E	E				E	E	E		G
OCTYLENE GLYCOL	E		E	E				E	E	E		E
OIL-PETROLEUM		X			G	G						E
OLEIC ACID	X	X	X	X	E	E	E	G	F	C	C	E
OLEUM	X	X	X	X	X	E	X	X	X	X	X	G
OLIVE OIL	X	X	C	G			E	E	G	C	E	E
ORTHO-DICHLOROBENZENE	X	X	X	X			X	X	X	X	X	E
ORTHO-DICHLOROBENZOL	X	X	X	X			X	X	X	X	X	E
ORTHOXYLENE	X	X	X	X			X	X	X	X	C	E
OXALIC ACID	C	G	E	E	E	E	E	G	G	E	C	E
OXYDIETHANOL												
OZONE	X	X	G	E	E	E	E	X	F	G	G	E
P-CYMENE	X		X	X			F	X	X	X	C	E
PAINT THINNER	X	X	X	X			F	X	X	X	C	E
PALMITIC ACID	C	G	C	C	E	E	E	E	G	C	C	E
PAPERMAKERS ALUM												
PARA-DICHLOROBENZENE	X	X	X	X			C	X	X	X	X	E
PARAFFIN WAX	X		X	X				E	G	E	E	E
PARALDEHYDE	F		E	E				C	G	X	X	X
PARAXYLENE	X		X	X			X	X	X	X	C	E
PELARGONIC ALCOHOL	E		E	E	E	E		E	E	E		
PENTACHLOROETHANE	X		X					X	X	X	C	E
PENTADIONE												
PENTAMETHYLENE	X		X	X			C	G	C	X	E	E
PENTANE	X	X	X	X	E	E	E	E	E	C	X	E
PENTANOL	E		E		E	E	E			E	X	G
PENTANONE	X		G	G				X	X	X		X
PENTASOL	X	G	E	G	E	E	E	C	G	E	X	G

RESISTENCIA QUÍMICA

CHEMICAL RESISTANT

E Excelente / Excellent

F Bien / Fair

X Insatisfactorio / Unsatisfactory

G Bueno / Good

C Condicional / Conditional

En Blanco / **Blank** No Hay Datos Disponibles / No Data Available

PENTYL ACETATE	C	X	X	C	E	E	X	X	X	X	X	X
PENTYL ALCOHOL	C	G	C	E	E	E	E	C	C	E	X	E
PENTYL BROMIDE	X		X	C				X	X	X		G
PENTYL CHLORIDE	X	X	X	X	E	E	E	X	X	X	F	E
PENTYL ETHER	X		X	X				C	X	F		
PENTYLAMINE	F		G	X				F	F	F		X
PERCHLORIC ACID	C	X	C	G	E	E	E	X	E	C	C	E
PERCHLOROETHYLENE	X	X	X	X	E	E	X	F	X	X	X	E
PERCHLOROMETHANE	X		X	X			X	X	X	X	X	
PETROLEUM CRUDE	X	X	X	X	E	E	E	G	G	E	G	E
PETROLEUM ETHER	X	X	X	X			G	E	X	C	G	E
PETROLEUM OILS	X	X	X	X	E	E		X	G	G	G	E
PHENBO												
PHENOL	C	X	C	X	E	E	E	X	X	C	X	E
PHENOLSULFONIC ACID	C	X	G	E				C	C	C	X	C
PHENYLAMINE	X		E	C	E	E		X	X	C	X	E
PHENYLBROMIDE	X		X				X			X	X	G
PHENYLAMETHANE	X		X	X	E	E	X	X	X	X	X	E
PHENYLMETHANOL	X		E	C			E	X	C	C	X	E
PHENYLMETHYL ACETATE												X
PHOSPHATE ESTERS	X	X	E	E			E	X	X	X	X	C
PHOSPHORIC ACIDS, 10%	E	E	E	E	E	E	E	E	E	E	E	E
PHOSPHORIC ACIDS, 10%-85%	G	G	E	E	E	E	E	G	G	E	G	E
PHOSPHORUS TRICHLORIDE	X	X	E	E	E	E	E	X	X	X		E
PICRICACID, H2O SOLUTION	C	G	G	E			G	E	E	E	G	E
PINE OIL	X	X	X	X	E	E	E	E	X	X	E	E
PINENE	X	X	X	X			E	C	C	X	C	E
POLYETHYLENE GLYCOL E-400	E		E	E			E	C	G	E		E
POLYOL ESTER				X				G	X			
POLYPROPYLENE GLYCOL	E		E		E	E	E	E	E	E		E
POTASSIUM ACETATE	E	X	E	E			E	C	E	E	X	C
POTASSIUM BISULFATE	E	G	E	E				E	E	E	X	E
POTASSIUM BISULFITE	E	G	E	E				E	E	E	E	E
POTASSIUM CARBONATE	E	E	E	E	E	E	E	E	E	E	X	E
POTASSIUM CHLORIDE	E	E	E	E	E	E	E	E	E	G	E	E
POTASSIUM CHROMATE	G	G	E	E				G	E	F	C	E
POTASSIUM CYANIDE	E	E	E	E	E	E	E	E	E	E	E	E
POTASSIUM DICHROMATE	C	G	E	E	E	E	E	E	E	G	G	E
POTASSIUM HYDRATE	C	G	E		E	E	E			E	C	F
POTASSIUM HYDROXYDE	C	G	E	E	E	E	E	G	G	E	C	F
POTASSIUM NITRATE	E	E	E	E	E	E	E	E	E	E	E	E
POTASSIUM PERMANGANATE, 5%	E	G	E	E	E	E	E	F	E	G	X	E
POTASSIUM SILICATE	E	E	E	E				E	E	E	E	E
POTASSIUM SULFATE	C	G	E	E	E	E	E	E	E	E	E	E
POTASSIUM SULFIDE	C	G	E	E				C	E	E	C	E
POTASSIUM SULFITE	C	G	E	E	E	E		E	E	C	E	E
PRESTONE ANTIFREEZE	E	E	E	E			G	E	E	E	X	E
PRODUCERS GAS	X	X	X	X			E	E	G	C	E	E
PROPANE	X	X	X	X	E	E	E	E	E	C	G	E
PROPANEDIOL	E	E	E	E	E	E	E	E	E	E	E	E
PROPANETRIOL	E	E	E	E	E	E	E	E	E	E	C	E
PROPANOL	E	E	E	E	E	E	E	E	E	E	X	E
PROPANOLAMINE												
PROPANONE	C	G	E	E	E	E	X	X	X	C	X	X
PROPENOL	E		E							E		E
PROPANEDIAMINE	G		E					G		F		
PROPENE NITRILE	G		X		E	E		X	X			
PROPENYL ALCOHOL	E		E	E	E	E		E	E	E		E
PROPENYL ANISOLE	X		X		E	E		X		X		G
PROPIONIC ACID	E	X	E	E			E	C	C	G	X	X
PROPIONITRILE	E		E	C			E	E	C			X
PROPYL ACETATE	X	X	C	C	E	E	X	X	X	X	X	X

RESISTENCIA QUÍMICA

CHEMICAL RESISTANT

E Excelente / Excellent

F Bien / Fair

X Insatisfactorio / Unsatisfactory

G Bueno / Good

C Condicional / Conditional

En Blanco / **Blank** No Hay Datos Disponibles / No Data Available

PROPYL ALCOHOL	E	E	E	E	E	E	E	E	E	E	X	E
PROPYL ALDEHYDE	F		G	G				X	X	X		X
PROPYL BENZENE	X		X						X	X	C	
PROPYL CHLORIDE	X		F	F				X	F	X		G
PROPYL NITRAATE	X	X	C	C			F	X	X	X	X	X
PROPYLENE	X	X	X	X			E	X	X	X	X	E
PROPYLENE DIAMINE	G		E					G		F		
PROPYLENE GLYCOL	E	E	E	E	E	E	E	E	E	E	G	E
PYDRAUL. 'E' SERIES	X	X	C	C			E	X	X	X	X	X
PYDRAULIC 'C'	X	X	X	X			E	X	X	X	X	E
RED OIL	X	X	X	F	E	E	E	E	F	C	C	E
REFRIGERANT 11	X	X	X		E	E	X			E	X	C
REFRIGERANT 12	X	E	X		E	E	X			E	E	G
REFRIGERANT 22	C	E	X		E	E	X			E	X	C
RESORCINOL	E	G	E	G			E	C	A	G	X	E
SAE NO. 10 OIL	X	X	X	X			E	E	C	X	E	E
SAL AMMONIAC	E	E	E	E	E	E	E	E	E	E	G	E
SEA WATER	E	E	E	E	E	E	E	E	E	E	G	E
SEWAGE	G	G	G	G	E	E	E	E	C	E	X	E
SILICATE ESTERS	X	C	X	X			E	G	E	G	E	E
SILICATE OF SODA	E	E	E	E			E	E	E	E	G	E
SILICONE GREASE	E	E	E	E	E	E	E	E	E	E	E	E
SILICONE OIL	E	E	E	E	E	E	E	E	E	E	E	E
SILVER NITRATE	E	G	E	E	E	E	E	C	E	E	E	E
SKYDROL 500 TYPE 2	X	X	G	E			X	X	X	X	X	G
SKYDROL 500B	X	X	G	E			X	X	X	X	X	G
SKYDROL 500C	X	X	G	E			X	X	X	X	X	G
SKYDROL 7000 TYPE 2	E	X	E	E			E	X	X	X	X	F
SOAP SOLUTIONS	F	X	E	E	E	E	E	E	G	E	G	E
SODA ASH	E	X	E	E	E	E	E	E	E	E	G	E
SODA LIME	E		E	E			G	G	G	G	F	G
SODA NITER	G	G	E	E	E	E	E	E	G	E	E	E
SODIUM ACETATE	F	X	F	E	E	E	C	G	C	G	C	X
SODIUM ALUMINATE	E	G	E	E			E	E	E	E	X	E
SODIUM BICARBONATE	E	E	E	E	E	E	E	E	E	E	E	E
SODIUM BISULFATE	E	G	E	E	E	E	E	E	E	E	G	E
SODIUM BORATE	E	E	E	E	E	E	E	E	E	E	E	E
SODIUM CARBONATE	E	E	E	E	E	E	E	E	E	E	C	E
SODIUM CHLORIDE	E	E	E	E	E	E	E	E	E	E	E	E
SODIUM CYANIDE	E	E	E	E	E	E	E	E	E	E	E	E
SODIUM DICHROMATE	X	G	E	E			E	E	F	G	G	E
SODIUM HYDRATE	E	G	E	E	E	E	E	X	G	C	C	G
SODIUM HYDROCHLORITE	F	G	G	G			E	F	F	E	C	E
SODIUM HYDROXIDE	E	G	E	E	E	E	E	X	G	C	C	G
SODIUM HYPOCHLORITE	X	F	C	E	E	E	E	C	C	G	X	E
SODIUM METHAPHOSPHATE	E	E	G	E	E	E	E	E	E	C	C	E
SODIUM NITRATE	G	G	E	E	E	E	C	C	G	E	E	E
SODIUM PERBORATE	G	G	E	E			E	C	G	E	G	E
SODIUM PEROXIDE	C	G	E	E	E	E	E	C	G	G	X	E
SODIUM PHOSPHATE	E	E	E	E	E	E	E	E	G	E	E	E
SODIUM SILICATE	E	E	E	E	E	E	E	E	E	E	G	E
SODIUM SULFATE	C	G	E	E	E	E	E	E	E	E	E	E
SODIUM SULFIDE	G	G	E	E	E	E	E	E	E	E	E	E
SODIUM SULFITE	G	G	E	E	E	E	E	E	E	E	E	E
SODIUM THIOSULFATE	G		E	E	E	E	E	C	E	E	E	
SOYBEAN OIL	X	X	G	C			E	E	E	G	C	E
STANNIC CHLORIDE	E	E	E	E	E	E	E	E	G	E	E	E
STANNIC SULFIDE	E		E	E			E	E	E	E		
STANNOUS CHLORIDE	E	E	E	G	E	E	E	E	E	E	G	E
STANNOUS SULFIDE	E		E	E				E	E	E		
STEAM BELOW 350° DEG F	C	X	G	E	X	X	E	X	X	C	X	C
STEARIC ACID	C	G	C	G	E	E	E	G	G	G	E	E

RESISTENCIA QUÍMICA

CHEMICAL RESISTANT

E Excelente / *Excellent*

F Bien / *Fair*

X Insatisfactorio / *Unsatisfactory*

G Bueno / *Good*

C Condicional / *Conditional*

En Blanco / *Blank* No Hay Datos Disponibles / *No Data Available*

STODDARD SOLVENT	X	X	X	X	E	E	G	E	G	X	E	E
STYRENE	X	X	X	X	F	F	X	X	X	X	X	E
SULFAMIC ACID	G		E	E				C	G	E	X	E
SULFUR	X	X	E	E	E	E	E	X	E	E	X	E
SULFUR CHLORIDE	X	X	X	E			E	C	E		C	E
SULFUR DIOXIDE	C	G	C	E		G	G	X	C	C	C	E
SULFUR TRIOXIDE, DRY	C	X	G	E	X	X	G	X	X	X	X	E
SULFURIC ACID 60%	X	X	E	E	X	X	E	G	X	G	X	E
SULFURIC ACID, CONC.	X	X	X	X	F	F	E	X	X	X	X	E
SULFURIC ACID FUMING	X	X	X	X	X	X	E	X	X	X	X	E
SULFURIC ACID 25%	E	F	G	E	E	E	E	C	C	E	X	E
SULFURIC ACID 25%-50%	G	F	G	E	E	E	E	C	X	G	X	E
SULFURIC ACID 25%-96%	C	X	C	X	G	G	E	X	X	C	X	E
SULFUROUS ACID 10%	G	G	E	E	E	E	E	E	C	E	X	E
SULFUROUS ACID 10%-75%	G	G	E	E	E	E	E	F	C	E	X	E
T-BUTYL AMINE	X		C	C			G	C	X	X	X	
TALL OIL	X	X	X	X			E	E	C	F	E	E
TALLOW	X	X	X	E	E	E	E	E	G	F	E	E
TANNIC ACID	E	G	E	E	E	E	E	E	E	E	E	E
TAR	X	X	X	X	X	F	E	X	X		G	E
TAR BITUMINOUS	X	X	X	X			E	G	C	X	G	E
TARTARIC ACID	E	G	G	G	E	E	E	E	E	E	E	E
TELLONE 2	C											
TERTIARY BUTYL ALCOHOL	C	G	C	C			E	C	C	C	X	E
TERPINEOL	X	X	C				E			X	C	E
TERTIARY BUTYL AMINE	X		C	C			G	C	X	X	X	
TERTIARY BUTYL MERCAPTAN	X	X	X	X			E	X	X	X	X	E
TETRACHLOROENZENE	X		X	X				X	X	X		G
TETRACHLOROETHANE	X	X	X	X	F	F	X	X	X	X	X	E
TETRACHLOROETHYLENE	X	X	X	X	F	F	X	C	X	X	X	E
TETRACHLOROMETHANE	X		X	X	E	E	E	X	X	X	F	E
TETRACHLORONAPHTHALENE	X		X	X	E	E		X	X	X		G
TETRAETHYLENE GLYCOL	E		E	E				E	E	E		E
TETRAETHYLORTHOSILICATE	X		E	E				E	E			
TETRAHYDROFURAN	X	X	C	X			X	X	X	X	X	X
TIN CHLORIDE	E		E	E	E	E	E	E	C	C	G	E
TITANIUM TETRACHLORIDE	X	X	X	X			G	C	C	X	X	E
TOLUENE	X	X	X	X	E	E	X	X	X	X	X	E
TOLUIDINE	X		X	X	E	F		C	X	X	C	G
TOLUOL	X	X	X	X	E	E	X	X	X	X	X	E
TRANSFORMER OIL	X	X	X	X	E	E	E	C	C	C	C	E
TRANSMISSION 'A' OIL	X		X	X			E	E	C	C	E	
TRI-AMINE	C		E	E			E	G	C	C	X	
TRIBUTYL PHOSPHATE	C	X	G	G			G	F		X	X	X
TRIBUTYLAMINE	G		E					G		F		
TRICHLOROACETIC ACID	C	X	C	C			F	C	C	X	X	X
TRICHLOROENZENE	X	X	X	X	F	F	C	C	X	X	C	G
TRICHLOROETHANE	X	X	X	X			X	X	X	X	X	E
TRICHLOROETHYLENE	X	X	X	X	F	F	X	X	X	X	X	E
TRICHLOROMETHANE	X	X	X	X	F	F	X	X	X	X	X	E
TRICHLOROTOLUENE	X			E			E	X	X	X		
TRICRESYL PHOSPHATE	X	X	E	E		E	X	X	X	X	X	E
TRIETHANOLAMINE	C	G	E	E	E	E	E	C	C	C	X	X
TRIETHYLAMINE	G	X	G	E			E	E	G	E	X	E
TRIETHYLENE GLYCOL	E		E	E	E	E		C	E	E	X	E
TRIMETHYLBENZOIC ACID	E		C	C			E	C	C	G	X	
TRIMETHYL PENTANE	X	X	X	X			F	E	G	C	G	E
TRIMETHYLAMINE	E		E	C				C	E	E	X	
TRISODIUM PHOSPHATE	E	E	E	E	E	E	E	E	E	E	E	E
TRITOLYL PHOSPHATE	X	X	E	E			E	X	C	C	C	E
TUNG OIL	X	X	C	X	E	E	E	E	C	C	F	E

RESISTENCIA QUÍMICA

CHEMICAL RESISTANT

E Excelente / Excellent

F Bien / Fair

X Insatisfactorio / Unsatisfactory

G Bueno / Good

C Condicional / Conditional

En Blanco No Hay Datos Disponibles / No Data Available

UNSYMETRICAL DIMETHYL HYDRAZINE	E	X	E	E				F	C	C	E	X	X
UNDECYL ALCOHOL	E		E	E				E	E	E			G
UREA	E		E	E	E	E	F	G	G	E	G	E	
URIC ACID	E		E	E				C	E	E	X		
VARNISH	X	X	X	X	E	E	C	G	X	X	G	E	
VEGETABLE OILS	X	X	C	F	E	E	E	E	C	G	E	E	
VERSILUBE F44	E	E	E	E			E	E	E	E	E	E	
VERSILUBE F55	E	E	E	X			E	E	E	E	E	E	
VINEGAR	G	G	E	E	E	E	E	G	G	E	C	E	
VINEGAR ACID	G		E	E	E	E	E			E	C		
VINYL ACETATE	X	X	E	G	E	E	X	C	C	F	X	E	
VINYL BENZENE	X	X	X	X	F	F	X	C	X	X			C
VINYL CHLORIDE	X		X	C	E	E	E	X	X	X	C	E	
VINYL CYANIDE	G	F	X	X	E	E	G	X	X	G	X	X	
VINYL ETHER	X		X				X	G		G			X
VINYL STYRENE													
VINYL TOLUENE	X		X	X				X	X	X			E
VINYL TRICHLORIDE	X		X	X			X	X	X	X	X	E	
VM&NAPHTHA	X	X	X	X				G	F	X			E
WATER	E	C	E	E	E	E	E	E	G	E	E	E	
WATER BOILING	E		E	E			E	G	G	E	E		
WATER SODA					E	E							
WENCO C	X	X	X	X			E	E	C	X	E	E	
WHISKEY	E	E	E	E	E	E	E	E	E	E	X	E	
WHITE OIL	X	X	X	X	E	E	E	E	G	C	E	E	
WHITE PINE OIL	X	X	X	X			E	C	X	X			E
WINES	E	E	E	E	E	E	E	E	E	E	X	E	
WOOD ALCOHOL	E	E	C	E	E	E	E	C	E	E	C	F	
WOOD OIL	X	X	C	X	E	E	E	E	C	C	C	E	
XENON	E	E	E	E			E	E	E	E	E	E	
XYLENE, XYLON	X	X	X	X	F	F	X	X	X	X	X	E	
XYLIDINE	X	X	G	G			G	C	X	X	X	X	
ZEOLITES	E	E	E	E			E	E	E	E	E	E	
ZINC ACETATE	E	X	E	E			F	G	C		X	C	
ZINC CARBONATE	E		E	E				E	E	E	E	E	
ZINC CHLORIDE	E	E	E	E	E	E	E	E	E	E	E	E	
ZINC CHROMATE	E		E	E				C	E	G	X		
ZINC SULFATE	E	G	E	E	E	E	E	E	E	E	X	E	
O-AMINOTOLUENE	X		C	C			C	X	X	X	X		
1 UNDECANOL	E	E	E	E	E	G		E	E	E			G
1-AMINO-2-PROPANOL	G		E	E				C	E	F			X
1-AMINOBUTANE	X	X	C	C			G	C	X	X	X	X	
1-AMINOPENTANE	F		G	X				F	C	F			X
1-BROMO-2-METHYL PROPANE	X		X	X				X	X	X			G
1-BROMO-3-METHYL PROPANE	X		X	X				X	X	X			G
1-BROMOBUTANE	X		X	X				X	X	X			
1-CHLORO-2-METHYL PROPANE	X		X	X				X	X	X			G
1-CHLORO-3-METHYL BUTANE	X		X	X			X	X	X	X	X	E	
1-DECANOL	X		X	X	E	E		E	X	C	E	G	
1-HENDECANOL	E		E	E				E	E	E			
1,4-DIOXANE	X		C	C	E		X	X	X	X	X		
2 (2AMINOETHYLAMINO) ETHANOL	G		E							G			
2 (2ETHOXYETHOXY) ETHANOL	C	G	C	C			E	C	C	C	X	G	
3 (2ETHOXYETHOXY) ETHYL ACETATE	X	X	G	X			E	X	X	G	X	G	
2- AMINOETHANOL	C	F	C	E			E	C	C	C	X	X	
CHLORO-1-HYDROXY-BENZENE	X		X	X			E	X	X	X	X		
2-CHLOROPHENOL	X	X	X	X			E	X	X	X	X	G	
2-CHOLOROPROPANE	X	X	X	X			X	X	X	X	X	E	
2-ETHOXYETHANOL	X	X	C	C	E	E	C	C	X	X	X	X	
2-ETHOXYETHYL ACETATE	C		C	G	E	E	C	X	X	X	C		

RESISTENCIA QUÍMICA

CHEMICAL RESISTANT

E Excelente / Excellent

F Bien / Fair

X Insatisfactorio / Unsatisfactory

G Bueno / Good

C Condicional / Conditional

En Blanco / **Blank** No Hay Datos Disponibles / No Data Available

2-ETHYL	X		G					X		X		X
2-ETHYL-1-HEXANOL	G	G	C	C	E	E	E	C	C	C	X	G
2-ETHYLHEXANOIC ACID	F		F					F		G		
2-ETHYLHEXYL ACETATE	X		E		C	C		X		G		
2-OCTANONE	X		G	G				X	C		X	X
3-BROMOPROPENE	X		X	X				X	X	X		G
3-CHLOROPROPENE	X	E	C	X	E	G	G	C	X	X		E
3-COAL OIL	X		X	X			E	E	G	F	F	
4-HYDROXY-4METHYL-2-PENTA-NONE	X	X	E	E	E	E	X	X	F	C	X	X



RESISTENCIA QUÍMICA PVC

PVC CHEMICAL RESISTANT

A Satisfactorio / Satisfactory

U Insatisfactorio / Unsatisfactory

C Cuestionable. Sugerir Prueba / Questionable / Suggest Testing

En Blanco / **Blank** No Hay Datos Disponibles / No Data Available

Químico Chemical	Concentración Concentration	Temperatura / Temperature	
		20°C / 68°F	60°C / 140°F
ACETATE SOLVENTS	10%	U	U
ACETIC ACID	GLACIAL	A	C
ACETIC ACID		C	U
ACETONE		U	U
ACRYLONITRILE		A	C
ADIPIC ACID		A	C
ALCOHOL BUTYL		A	C
ALCOHOL ETHYL		A	C
ALCOHOL ISOPROPYL		A	C
ALCOHOL METHYL		A	C
ALUMINIUM ACETATE		A	
ALUMINIUM CHLORIDE		A	A
ALUMINIUM HYDROXIDE		A	
ALUMINIUM SULFATE		A	A
ALLYL CHLORIDE			
AMMONIA	0.88 S.G (AQUEOUS)	A	A
AMMONIA	DRY GAS	A	
AMMONIA	LIQUID	U	U
AMMONIUM CHLORIDE		A	A
AMMONIUM HYDROXIDE		A	
ANIMAL OILS			
AMYL ACETATE		U	U
ANILINE OILS			
AROMATIC HYDROCARBONS		U	U
ASPHALT		U	U
ASTM FUEL A		A	A
ASTM FUEL B		U	U
ASTM 1 OIL			
ASTM 3 OIL			
BARIUM CHLORIDE		A	A
BARIUM HYDROXIDE		A	A
BARIUM SULFIDE		A	A
BENZENE		U	U
BENZINE		C	C
BORDEAUX MIXTURE		A	A
BORAX		A	A
BORIC ACID		A	A
BRINE		A	A
BROMINE TRACES		U	U
BUTYL ACETATE		U	U
CALCIUM HYDROXIDE		A	A
CALCIUM HYPOCHLORITE		A	A
CARBONIC ACID		C	U
CARBON DIOXIDE		A	A
CARBON DISULPHITE		U	U
CARBON MONOXIDE		A	A
CARBON TETRACHLORIDE		U	U

RESISTENCIA QUÍMICA PVC

PVC CHEMICAL RESISTANT

A Satisfactorio / Satisfactory

U Insatisfactorio / Unsatisfactory

C Cuestionable. Sugerir Prueba / Questionable / Suggest Testing

En Blanco / **Blank** No Hay Datos Disponibles / No Data Available

CASEIN			A	C
CHLORINE	DRY GAS		A	A
CHLORINE	WET GAS		C	U
CHLORINE	WATER		U	U
CHLOROBENZENE			U	U
CHLORINATED HYDROCARBONS			U	U
CHLOROFORM			U	U
CHROMIC ACID	10%		A	C
CITRIC ACID			A	A
COAL TAR			U	U
COPPER CHLORIDE			A	A
COPPER NITRATE			A	A
COOPER SULPHATE			A	A
COTTONSEED OIL				
CREOSOTE			U	U
CRESOL			A	C
CRESYLIC ACID			U	U
CYCLOHEXANE			A	C
CYCLOHEXANONE			U	U
DDT WEED KILLER			A	C
DETERGENT SYNTHETIC			A	A
DEVELOPERS PHOTOGRAPHIC			A	A
DEXTRIN			A	A
DEXTROSE			A	A
DIBUTYL PHTHALATE			U	U
DICHLOROBENZENE			U	U
DIESEL OIL				
DIETHYLENE GLYCOL			A	A
DIETHYL ETHER			U	U
DI-ISODECYL PHTHALATE			U	U
DICOTYL PHTHALATE			U	U
EMULSIFIERS			A	A
EMULSIONS PHOTOGRAPHIC			A	A
ETHYL ACETATE			U	U
ETHYLENE DICHLORIDE			U	U
ETHYLENE GLYCOL			A	A
FATTY ACID			A	A
FERRIC CHLORIDE			A	A
FERRIC SULFATE FERROUS CHLORIDE			A	A
FERROUS SULPHATE			A	A
FIXING SOLUTION PHOTOGRAPHIC	A		A	
FLUORINE			U	U
FORMALDEHYDE	40%		U	U
FORMIC ACID	40%		A	A
FORMIC ACID	50%		C	U
FORMIC ACID	100%		U	U
FUEL OIL				
GLACIAL ACETIC ACID			C	U
GLUCOSE			A	A

RESISTENCIA QUÍMICA PVC

PVC CHEMICAL RESISTANT

A Satisfactorio / Satisfactory

U Insatisfactorio / Unsatisfactory

C Cuestionable. Sugerir Prueba / Questionable / Suggest Testing

En Blanco / **Blank** No Hay Datos Disponibles / No Data Available

GLYCERINE			A	A
GRAPE SUGAR			A	A
GREASE				
HEPTANE			C	U
HEXANE			C	U
HYDROBROMIC ACID			A	A
HYDROCHLORIC ACID	10%		A	A
HYDROCHLORIC ACID	40%		A	U
HYDROFLUORIC ACID	10%		A	C
HYDROFLUORIC ACID	40%		A	U
HYDROFLUOBORIC ACID			A	A
HYDROFLUOSILICIC ACID			A	A
HYDROGEN PEROXIDE			A	
HYDROGEN SULPHIDE			A	
ISO-OCTAN			A	C
ISOPROPYL ACETATE			U	U
KEROSENE			C	C
KETONES			U	U
LACTIC ACID	10%		A	
LACTIC ACID	100%		U	U
LACQUER SOLVENTS			C	U
LINSEED OILS				
LUBRICATING OIL				
MAGNESIUM CHLORIDE			A	A
MAGNESIUM HYDROXIDE			A	A
MAGNESIUM SULPHATE			A	A
MALIC ACID			A	A
METHYL ACETATE			U	U
METHYL BROMIDE			U	U
METHYL ETHYL KETONE			U	U
METHYLENE CHLORIDE			U	U
MINERAL OILS				
MONOCHLOROBENZENE			U	U
NAPHTHA			C	U
NAPHTHALENE			C	U
NITRIC ACID	10%		A	A
NITRIC ACID	40%		A	C
NITRIC ACID	70%		U	U
NITROBENZENE			U	U
NITROGEN FERTILIZERS			A	
OLEIC ACID			A	C
OXALIC ACID			A	A
PALMITIC ACID			A	A
PATAFFIN			A	A
PENTANE			C	U
PERCHLOROETHYLENE			U	U
PHENOL			C	U
PHOSPHORIC ACID			A	A
PITCH			A	C

RESISTENCIA QUÍMICA PVC

PVC CHEMICAL RESISTANT

A Satisfactorio / Satisfactory

U Insatisfactorio / Unsatisfactory

C Cuestionable. Sugerir Prueba / Questionable / Suggest Testing

En Blanco / **Blank** No Hay Datos Disponibles / No Data Available

POTASSIUM HYDROXIDE			A	A
PROPANE			A	A
SEA WATER			A	A
SODIUM HYDROXIDE (CAUSTIC SODA)	10%		A	A
SODIUM HYDROXIDE (CAUSTIC SODA)	50%		A	U
SODIUM CIANYDE			A	A
SOYBEAN OIL				
STEARIC ACID			A	A
STYRENE			U	U
SULPHUR DIOXIDE	DRY GAS		A	A
SULPHUR DIOXIDE	MOIST		C	U
SULPHUR DIOXIDE	LIQUID		U	U
SULPHURIC ACID	45%		A	A
SULPHURIC ACID	60%		C	C
SULPHURIC ACID	98%		U	U
SULPHUROUS ACID	30%		A	
TANNIC ACID			A	A
TARTARIC ACID			A	A
TETRAHYDROFURAN			U	U
TOLUENE			U	U
TRICHLORETHYLENE			U	U
TRIETHANOLAMINE			A	A
TRICRESYL PHOSPHATE			U	U
TURPENTINE			C	U
UREA			A	A
VINEGAR			A	A
VINYL ACETATE			U	U
VINYL CHLORIDE			U	U
WATER			A	A
XYLENE			U	U
ZINC CHLORIDE			A	A
ZINC SULPHATE			A	A



**INDUSTRIA
QUÍMICA**

